

**QLUXM**

**QLUXM8W120V9WD Series**  
Dim to Warm 120V landscape light



Input Voltage	120V
CRI	95+
R9	97+
CCT	3000K to 1800K, 2700K to 1800K
Lumens	512lm
Efficacy	64 lm/W
Beam Angles	20°, 36°, 60°
Dimming	Magnetic low voltage
Dimensions	54mm OD x 54mm
Available Finishes	Silver, Brass, Copper

**RoHS**



**FEATURES**

- Superior color rendering CRI 95+, R9 97+
- Dimmable from 3000K to 1800K or 2700K to 1800K
- LM-80 compliant LEDs
- Tight binning 3 step Mac Adam ellipses
- Uniform & crisp light source intensity
- Hot spot free design
- Exceed Energy Star lumen maintenance requirements
- Low flickering percentage
- Low heat generation, easy thermal management

- Easy to fit in new design or retrofit applications

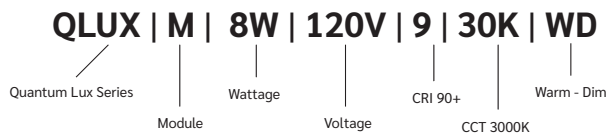
**APPLICATIONS**

Ideal for new and retrofit landscape lighting designs and fixtures.

**Outdoor Lighting**

- Bullet Light
- Path Light
- Spot Light

**MODEL KEY**

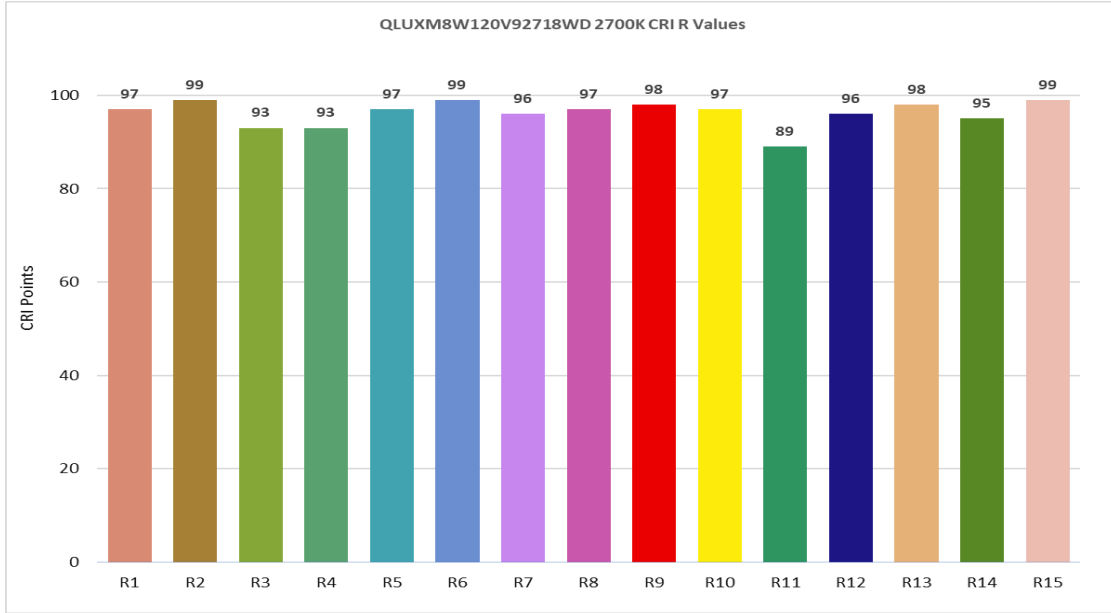


**MODEL SPECIFICATIONS**

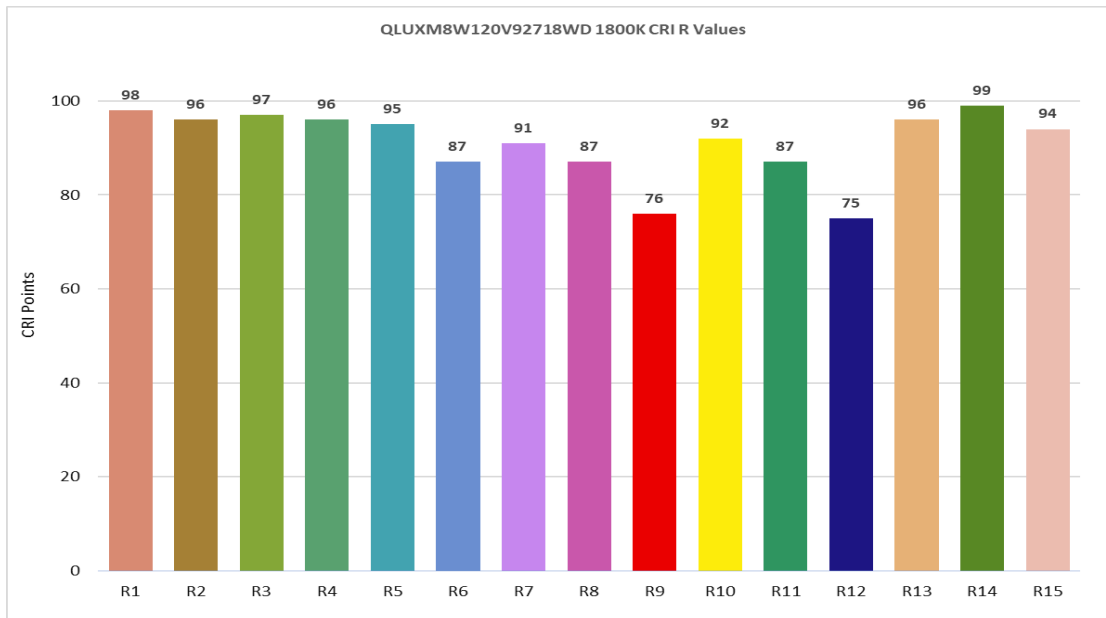
Model Number	Input Voltage	Wattage	Input Current (max)	CCT	Beam Angle Options
QLUXM8W120V92718WD	120V AC 50/60Hz	8W	75mA	2700K - 1800K	20°(White), 36° (Grey), 60°(Black)
QLUXM8W120V93018WD		8W	75mA	3000K - 1800K	

**CRI CHARTS**

**2700K**

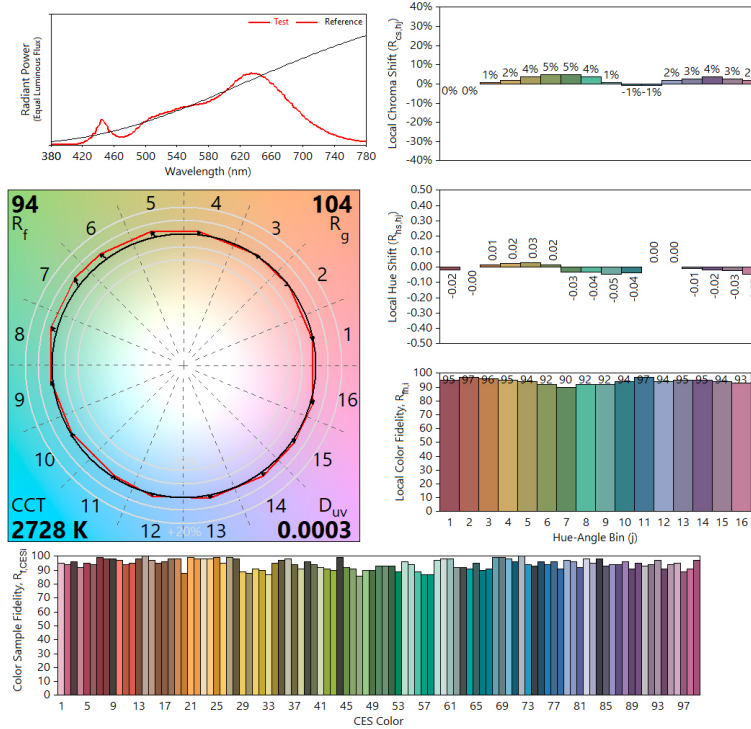


**1800K**

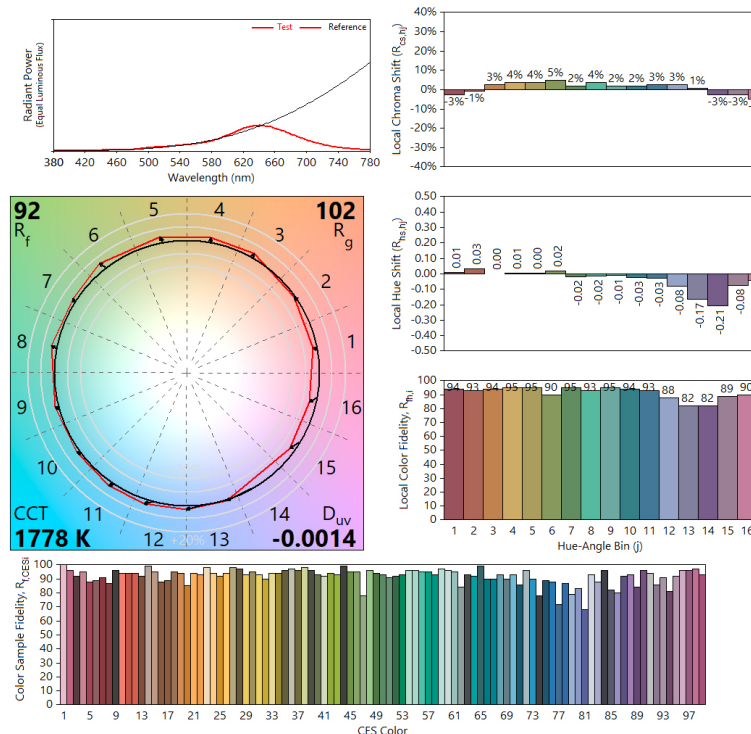


## TM30 CHARTS

### 2700K

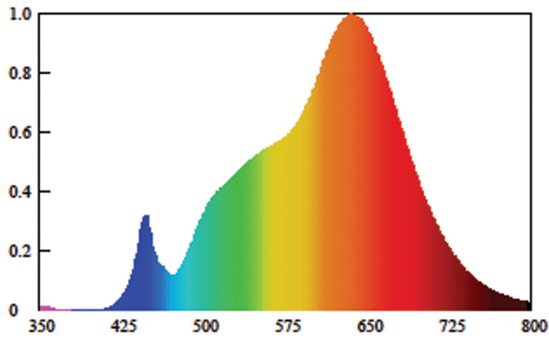


### 1800K

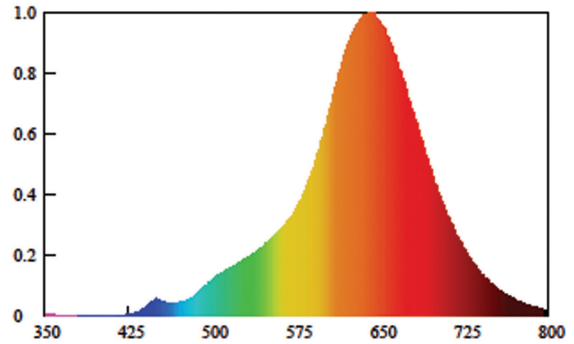


### SPECTRORADIOMETRIC CHART

**2700K**

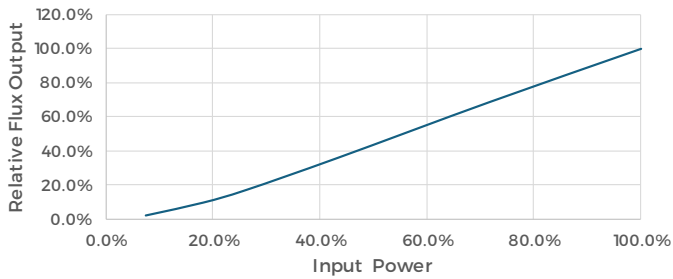


**1800K**

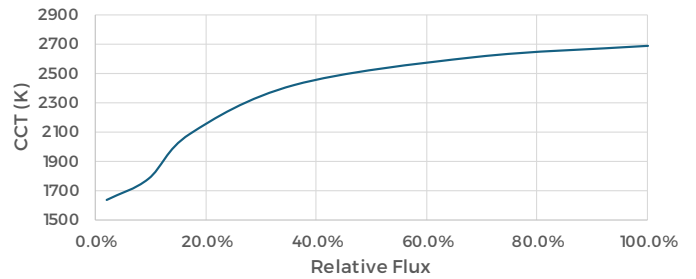


### DIMMING CHART

**Phase Dimming**



**CCT vs Flux**



### MECHANICAL SPECS

