

QLUXF50001200LEDCOB9 SERIES

Architectural Grade COB Flexible LED Tape



CRI / R9	92+/50+
Lumens per foot	~427lm/ft
LEDs per foot	72 LEDs/ft
Cut Lengths	2"(51mm)
Watts per foot	4.5W/ft
Input Voltage	24V DC
Luminous Efficiency	95lm/W
Tape Width	0.4"(10mm)



RoHS



FEATURES

- COB-like remote phosphor covers LEDs for even light distribution along the length of the tape.
- Superior Color Rendering CRI 92.4
- High efficacy lumen output 95 lm/W
- 51mm cut lengths with solder pads
- LM-80 compliant LEDs
- Tight Binning 3 Step Mac Adam Ellipses
- Low heat generation, easy thermal management
- Easy to fit in new design or retrofit applications

APPLICATIONS

Ideal for new and retrofit architectural designs and lighting fixtures.

Indoor Lighting

- Wall Wash Effects
- Ceiling Light
- Fixtures
- Signage

Outdoor Lighting

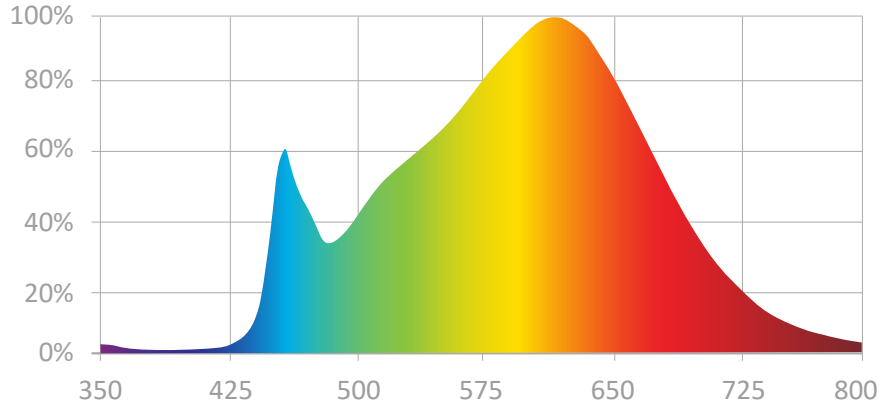
- Street Light
- Marker Light
- Wall Sconces
- Signage Light

MODEL SPECIFICATIONS

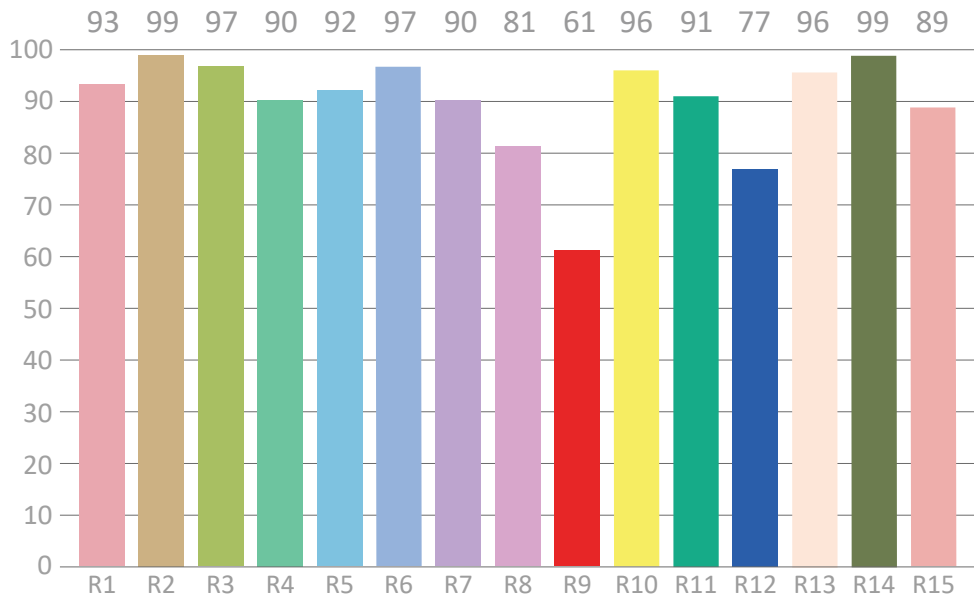
Model Number	CCT	Input Voltage	lm/m	W/m	lm/W
QLUXF50001200LEDCOB927	2700K	24V DC	1350 lm/m	15 W/m	90 lm/W
QLUXF50001200LEDCOB930	3000K	24V DC	1425 lm/m	15 W/m	95 lm/W
QLUXF50001200LEDCOB9xx	Custom CCT	24V DC	--	--	--

QLUXF50001200LEDCOB9 SERIES
Architectural Grade COB Flexible LED Tape

SPECTRORADIOMETRIC CHART



CRI CHART



QLUXF50001200LEDCOB9 SERIES

Architectural Grade COB Flexible LED Tape

CHARACTERISTICS

Parameter		Rated Value	Unit
Forward Voltage DC	VF	24V DC	V
Forward Current	IF	106	mA/12"
Power	PD	2.6	W/12"
CRI	Ra	92.4	
Luminous Flux	Φ	427	Lm (12")
PCB Width	W	10	mm
Copper Thickness	T	3	OZ
Min. Element Size	L	101	mm
Min. Buckling Radius	R	≥ 50	mm
Angle	2θ½	120	deg
Static Electricity	ESD	800	V
Junction Temperature	Tj	115	°C
IP Grade	IP	IP20	/
LED Color Temperature	CCT	3000K	K
LED Brightness	LM	16 lm/LED	LM

MODEL NUMBER	WATTS	OUTPUT VOLTAGE
DS96W24VBR1UD-3002	96W	24V Constant Voltage

For tape lengths less than full 5M reel, use appropriate LTF 24V drivers to match tape load power rating under worse scenarios.

MECHANICAL SPECS

