

# QLUXL25710W22LED930K SERIES

## 257mm Linear DC LED Board



<b>Wattage</b>	10W
<b>CRI/R9</b>	95+/96+
<b>Available CCT</b>	3000K
<b>Lumens</b>	1300lm
<b>Efficacy</b>	120lm/W
<b>Number of LEDs</b>	22 LEDs
<b>Beam Angle</b>	120°
<b>Dimensions</b>	257mm x 10mm x 1.6mm
<b>Dimming</b>	Constant Current Reduction



### FEATURES

- Superior color rendering CRI 96+/R9 93+, TLCI 97
- High efficacy lumen output 120lm/W
- LM-80 compliant LEDs
- Tight binning 3 Step Mac Adam Ellipses
- Uniform & crisp light source intensity
- Hot spot free design
- Extra thin low profile
- Low heat generation, easy thermal management
- Easy to fit in new design or retrofit applications

### APPLICATIONS

Ideal for new and retrofit architectural designs and lighting fixtures.

#### Indoor Lighting

- Ceiling Light
- Wall Sconces
- Table Lamps
- Fixtures
- Signage

#### Outdoor Lighting

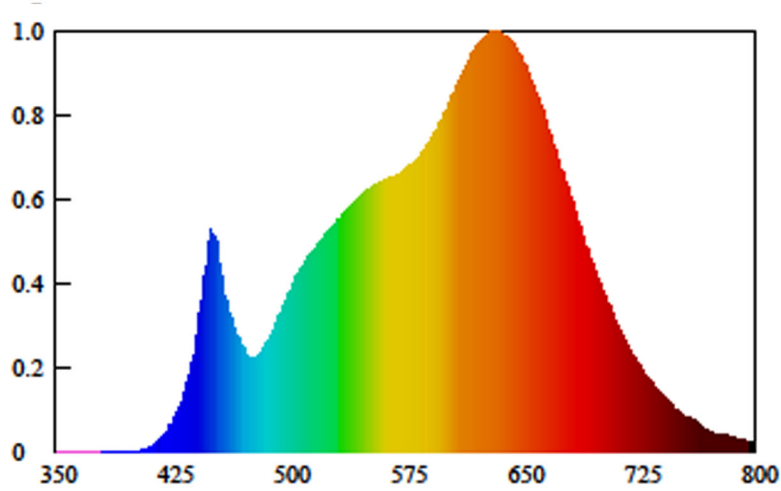
- Street Light
- Marker Light
- Wall Sconces
- Signage Light



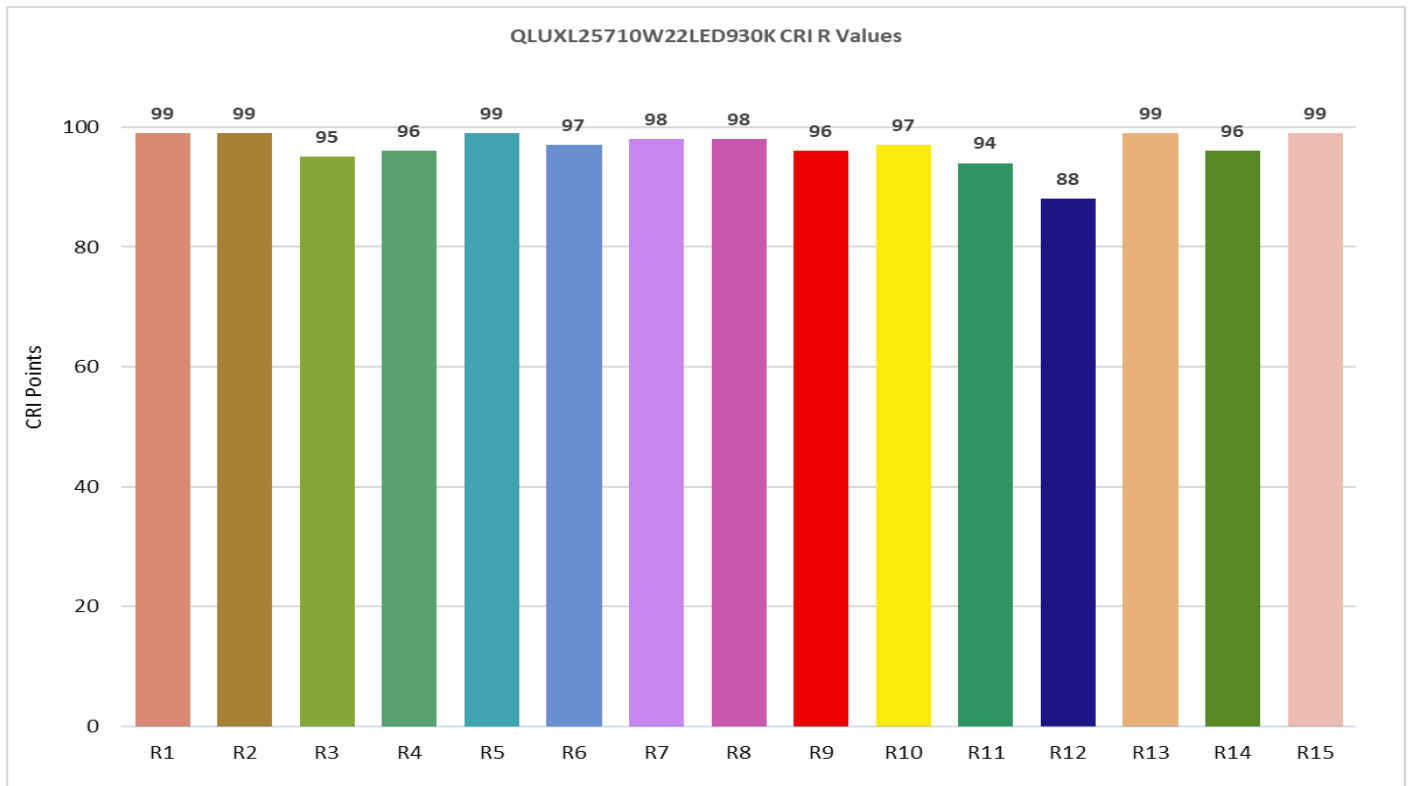
### MODEL SPECIFICATIONS

Model Number	CCT	Watts	Typ. Forward Voltage	Max. Forward Voltage	Typ. Forward Current	Max. Forward Current
QLUXL25710W22LED930K	3000K	10W	31.22V	35.0V	350mA	400mA

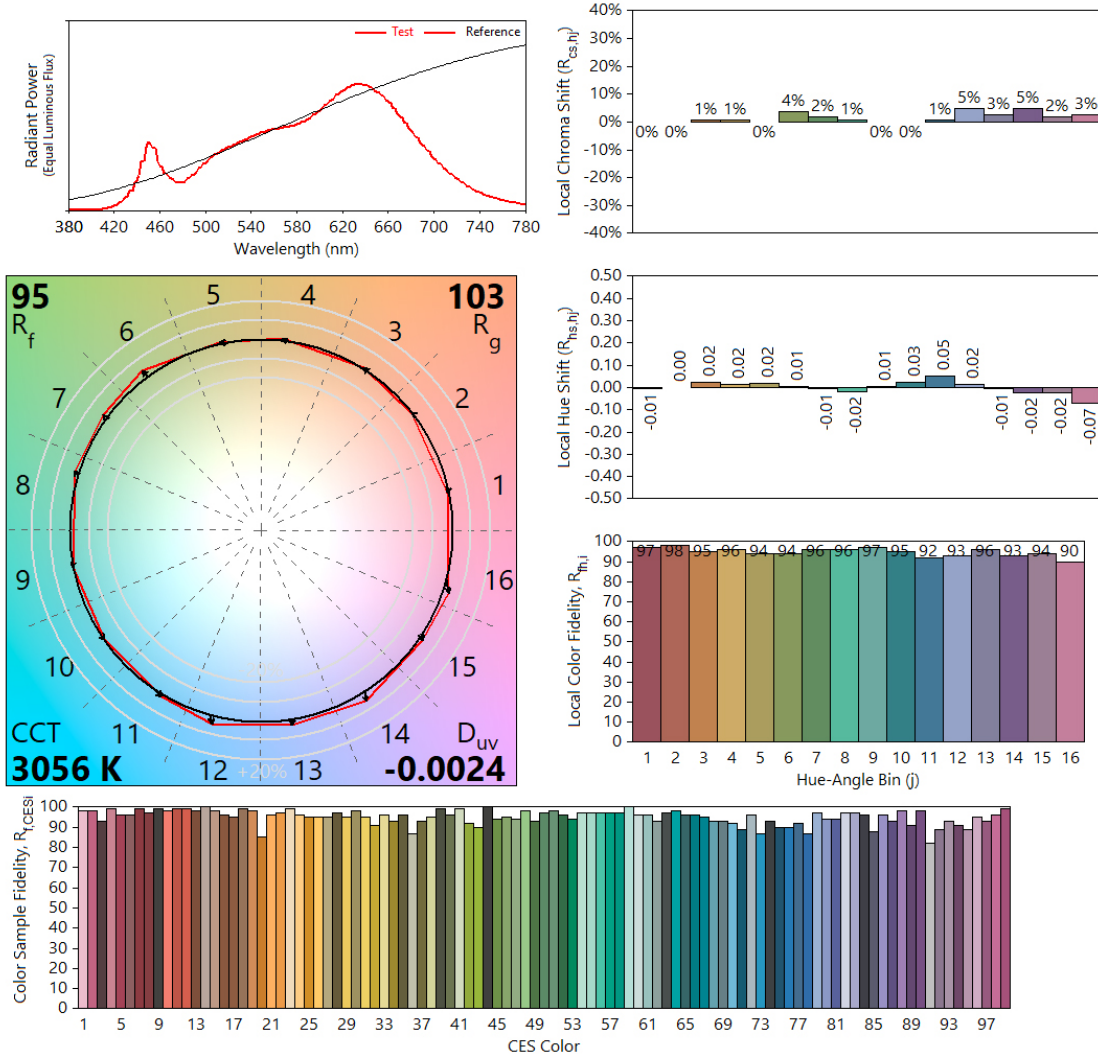
### SPECTRORADIOMETRIC CHARACTERISTICS



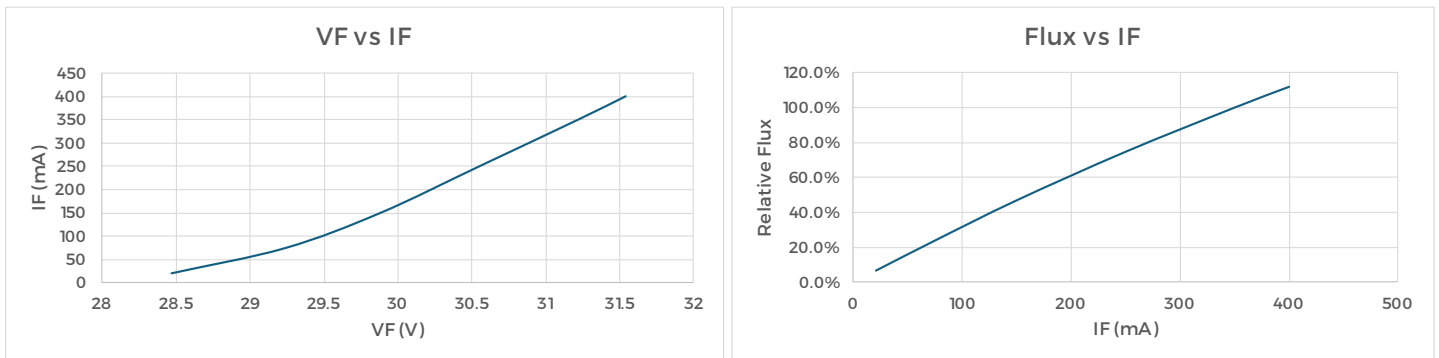
### CRI TEST



### TM30 CHART



### DIMMING CURVES



### RECOMMENDED DRIVERS

LTF DS, DA & DL series constant current drivers can be used for single board or multiple boards lighting fixture. Please check [www.ltftechnology.com](http://www.ltftechnology.com) for more information.

### MECHANICAL SPECS

