

QLUXL45824W56LED930
24V 452mm Linear DC LED Board



Wattage	24W
CRI	95+
Available CCT	3000K
Lumens	2700lm
Efficacy	110lm/W
Number of LEDs	56 LEDs
Beam Angle	120°
Dimensions	18”(452mm) x 1”(25.4mm) x 0.04”(0.93mm)
Dimming	Constant Current Reduction



FEATURES

- Superior Color Rendering CRI 95+
- High efficacy lumen output 110 lm/W
- LM-80 compliant LEDs
- Tight Binning 3 Step Mac Adam Ellipses
- Uniform & crisp light source intensity
- Hot Spot Free Design
- Extra thin low profile
- Low heat generation, easy thermal management
- Easy to fit in new design or retrofit applications

APPLICATIONS

Ideal for new and retrofit architectural designs and lighting fixtures.

Indoor Lighting

- Ceiling Light
- Wall Sconces
- Table Lamps
- Fixtures
- Signage

Outdoor Lighting

- Street Light
- Marker Light
- Wall Sconces
- Signage Light

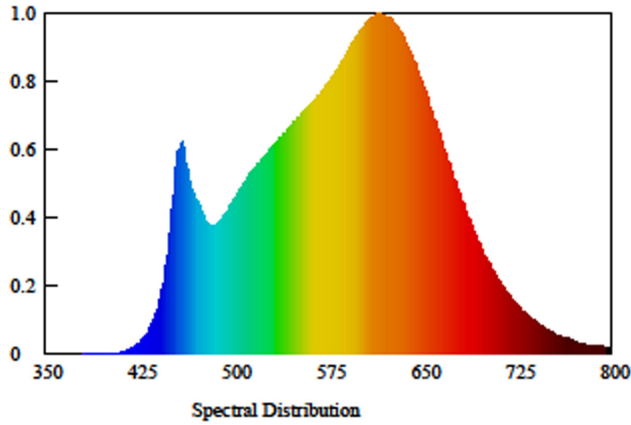


MODEL SPECIFICATIONS

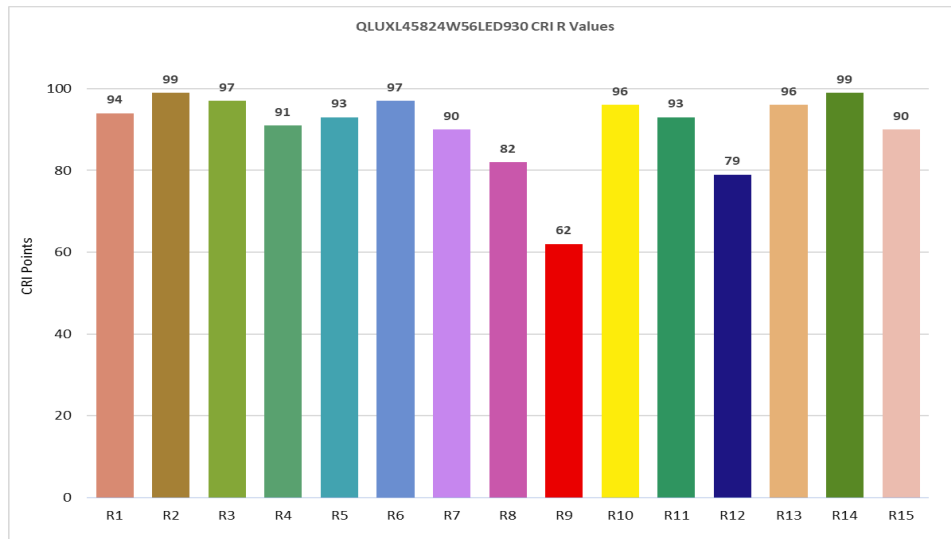
Model Number	CCT	Watts	Typ. Forward Voltage	Max. Forward Voltage	Typ. Forward Current	Max. Forward Current
QLUXL45824W55LED930	3000K	24W	22.5V	23.5V	1050mA	1500mA

SPECTRORADIOMETRIC CHARACTERISTICS

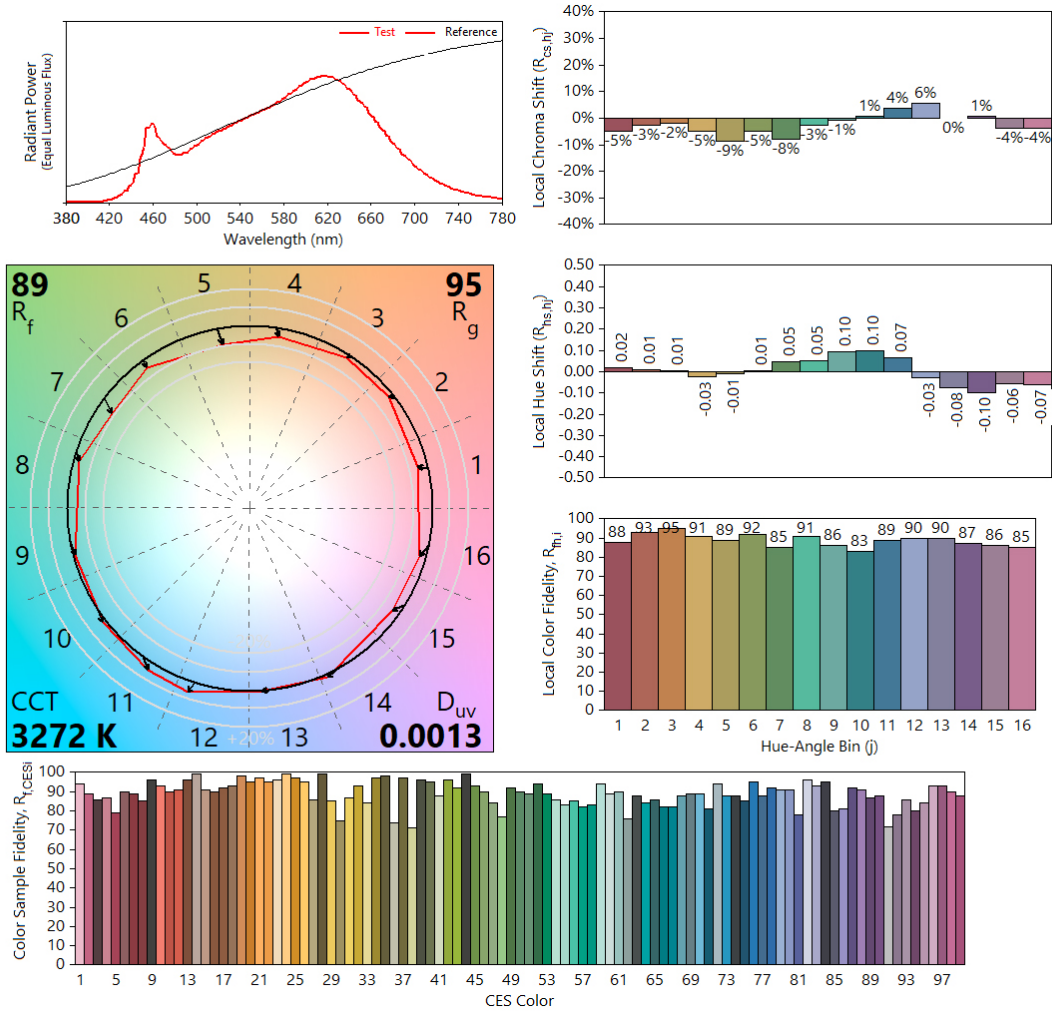
Spectroradiometric Parameters



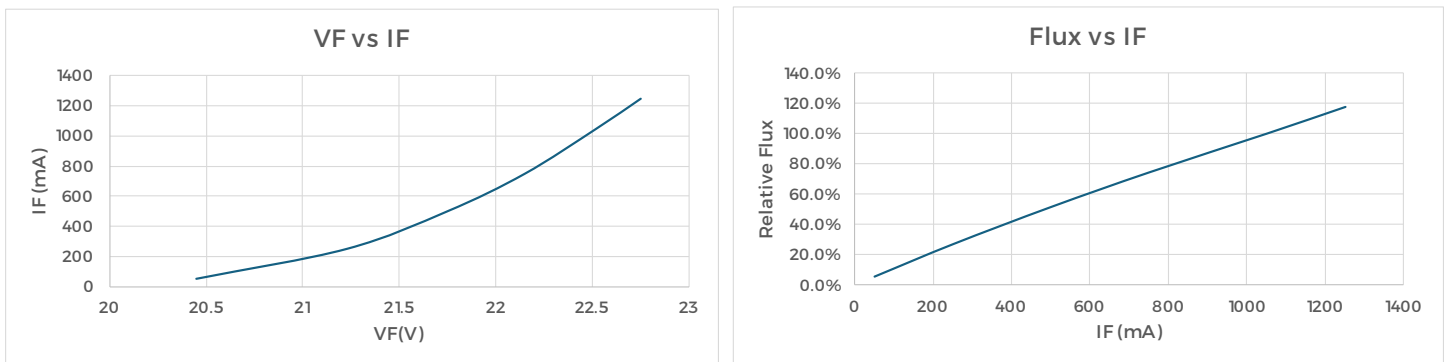
CRI TEST



TM30 CHART



DIMMING CURVES



MECHANICAL SPECS

