

QLUXCOBI1313903018WD-PH
Dim to Warm COB



Size	13.25mm x 13.25mm
LES	6mm (OD)
Maximum Voltage	≈18V
Typical Power	≈6.2W
Typical Efficacy	≈88lm/W
CCT	3000K dims to 1800K
Typical CRI	93+
Maximum Lumens	≈545lm



LTF's U.S. Patented QLUX Light Tune Series COB LEDs offer endless possibilities for lighting OEMs and designers. With industry leading adjustable CCT range, high efficacy, superior color rendering and best color over angle performance built into all QLUX LED light sources. Light Tune COBs let you dial in the perfect illumination for any architectural lighting application.

FEATURES

- Dim to Warm feature enables light to transform from vibrant 3000K CCT down to a warm, cozy 1800K as it is dimmed.
- Superior color rendering performance throughout CCT and dimming ranges.
- Excellent color uniformity and best color over angle with TIR optics.
- Customizable CCT and dimming curve options.
- Proven reliability; LM-80 9,000 hours completed.
- Cost effective.
- Low thermal resistance with long time reliability.

APPLICATIONS

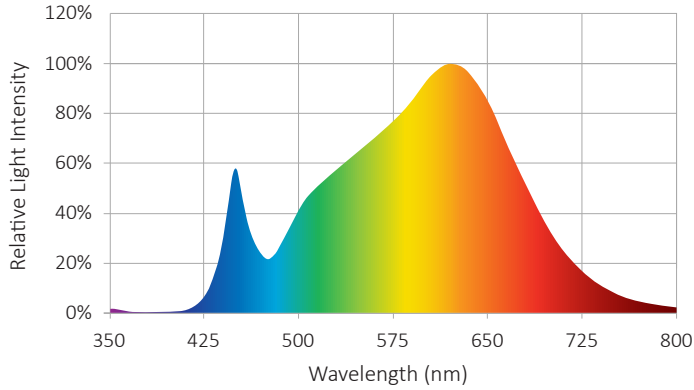
- Human-Centric lighting
- Circadian Lighting
- Architectural Lighting
- Spot Lights
- Down Lights
- Pendants

MODEL SPECIFICATIONS

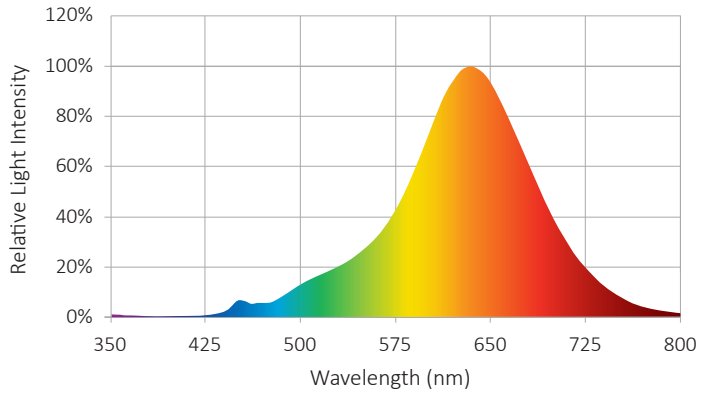
Model Number	CCT	TYP. Power	Typ. Current	Max. Current	Typ. Voltage	Luminous Flux	CRI/R9
QLUXCOBi131390318WD-PH	3000K dims to 1800K	6.2W	350mA	400mA	17.8V	545lm	94/64

SPECTRORADIOMETRIC CHART

3000K

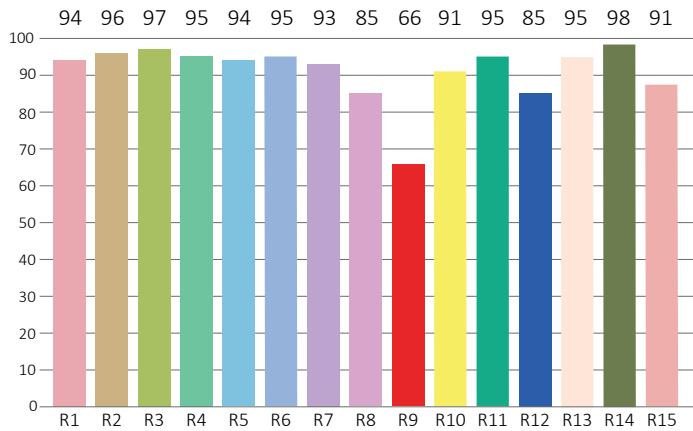


1800K

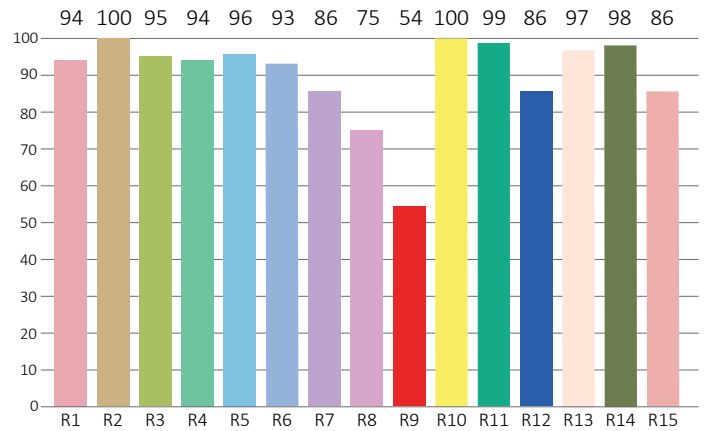


CRI CHART

3000K

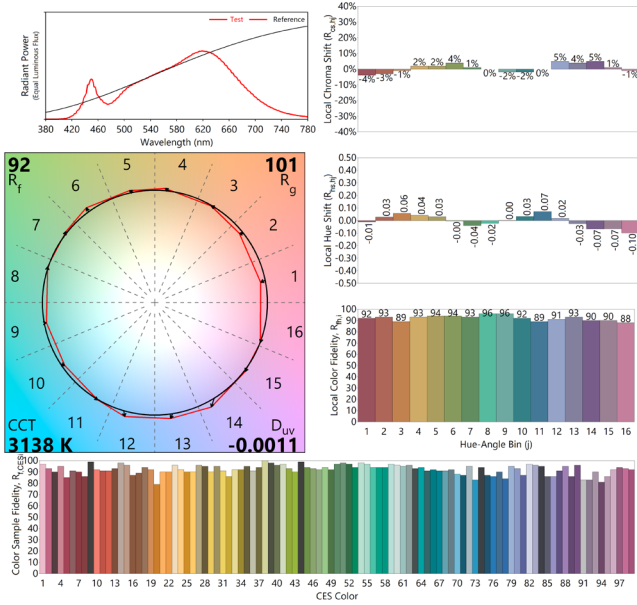


1800K

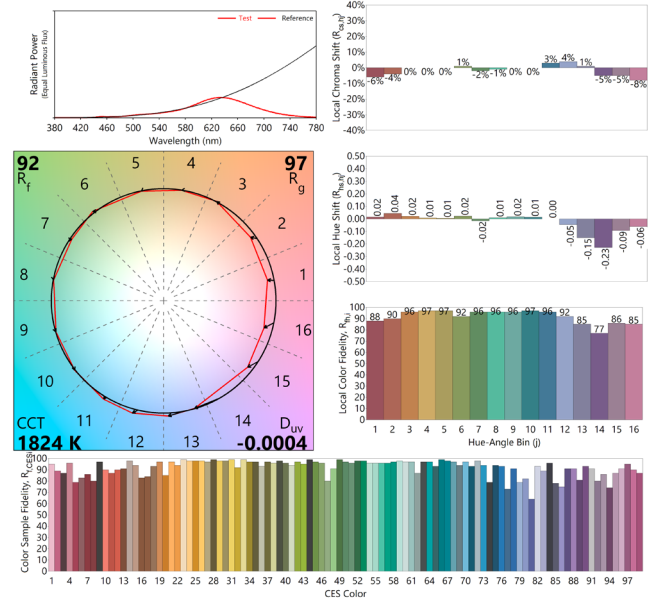


TM-30

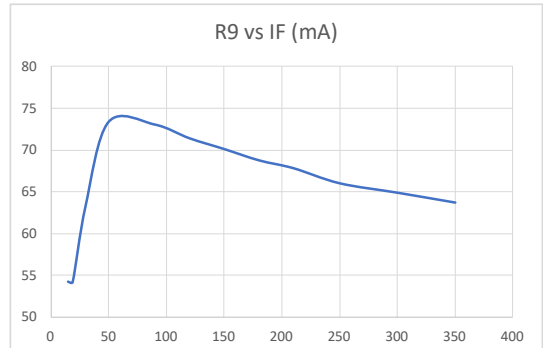
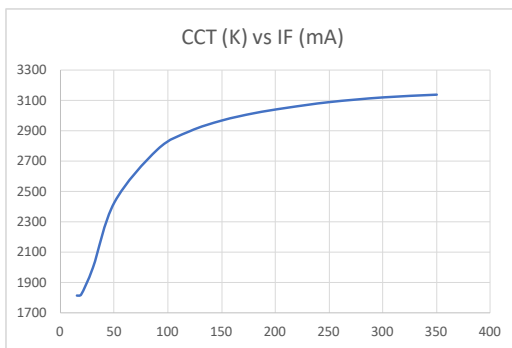
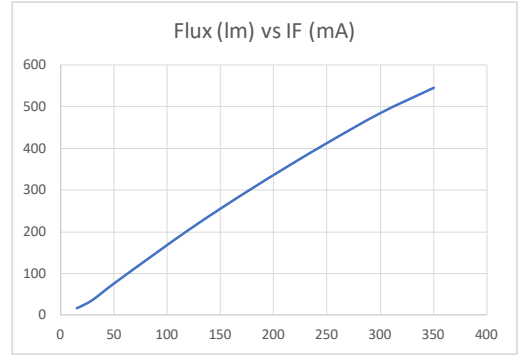
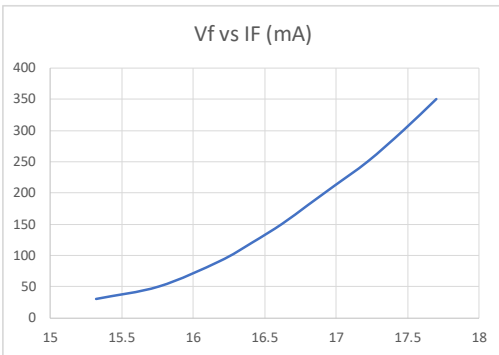
3000K



1800K



DIMMING CURVES



RECOMMENDED LTF DRIVERS

MODEL NUMBER	Watts	Output Current	Output Voltage
DS3W150C1520MB1UD-0000	3W	150mA	15V - 20V DC LED
DS6W200C1530MB1UD-0000	6W	200mA	15V - 30V DC LED
DS6W230C1526MB1UD-0000	6W	230mA	15V - 26V DC LED
DS6W280C1524MB1UD-0000	6W	280mA	15V - 24V DC LED
DS6W300C1520MB1UD-0000	6W	300mA	15V - 20V DC LED

MECHANICAL SPECS

