



Input Voltage	120V or 220V AC
Wattage	10W
Nominal Lumens	700lm +
CCT	3000K - 1800K
CRI/R9	98, 94+
Color Fidelity (Rf), Gamut (Rg)	94, 100
Percent Flicker	<1%
Dimming	Phase Dimmable
Dimming Range	100% - <0.1%
Beam Angles	15°, 24°, 36°



SunLight2 is an Architectural-Grade LED bulb optimized for an eye healthy lighting experience with low blue emission and no flicker. Its high CRI, full spectrum light provides exceptional color accuracy using patented LED technology.

### FEATURES

- High CRI 98, R9 94+, TLCI 100 designed to provide superior color accuracy for residential, commercial and retail lighting applications
- Dim to Warm 3000K dims to 1800K
- Low blue emission for circadian health
- Low Flicker Index - Providing an ideal and user health focused light source.
- Energy efficient equivalent to 50W halogen bulb
- Suitable for use in both open and fully enclosed fixture

### APPLICATIONS

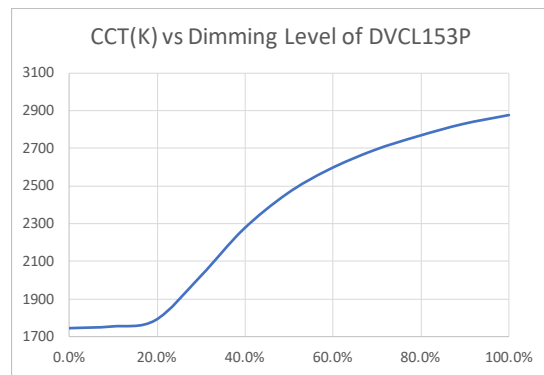
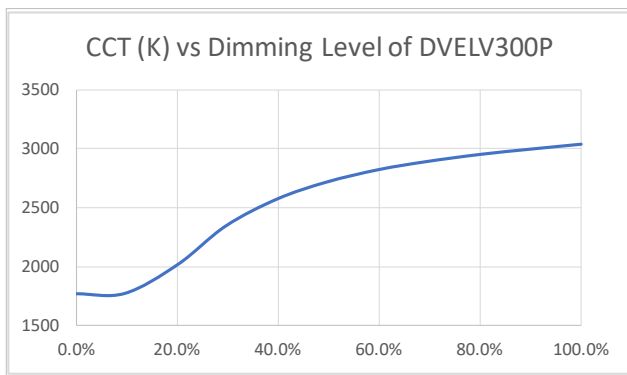
- Color critical task lighting
- Residential & hospitality lighting
- Museum & gallery lighting
- Color-critical retail displays (e.g, apparel, groceries, hard goods, jewelry, and toys)
- Architectural track lighting, pendants, downlights, and other indoor and outdoor applications
- Suitable for damp locations
- Indoor and Outdoor

### MODEL SPECIFICATIONS

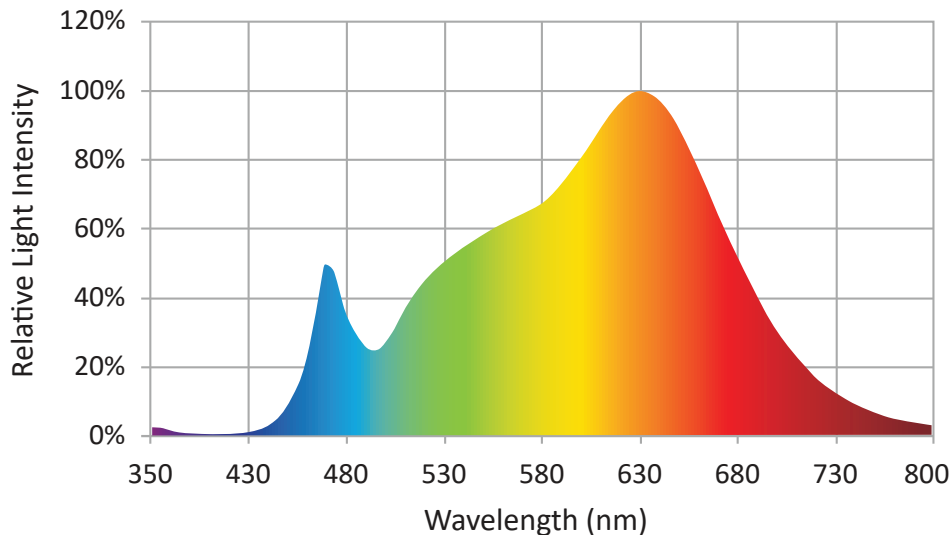
120V						
Model Number	Watts	Input Voltage	CCT (dim to warm)	Lumens	Beam Angle	*Case Finishes
PAR20A10W3018KWD15*	10W	120V AC	3000K dims to 1800K	700lm +	15°	S(Silver), B(Black), W(White)
PAR20A10W3018KWD24*	10W			700lm +	24°	
PAR20A10W3018KWD36*	10W			700lm +	36°	

220V						
Model Number	Wattage	Input Voltage	CCT (dim to warm)	Lumens	Beam Angle	*Case Finishes
PAR20U10W3018KWD15*	10W	220V AC	3000K dims to 1800K	700lm +	15°	S(Silver), B(Black), W(White)
PAR20U10W3018KWD24*	10W			700lm +	24°	
PAR20U10W3018KWD36*	10W			700lm +	36°	

### DIMMING CURVE

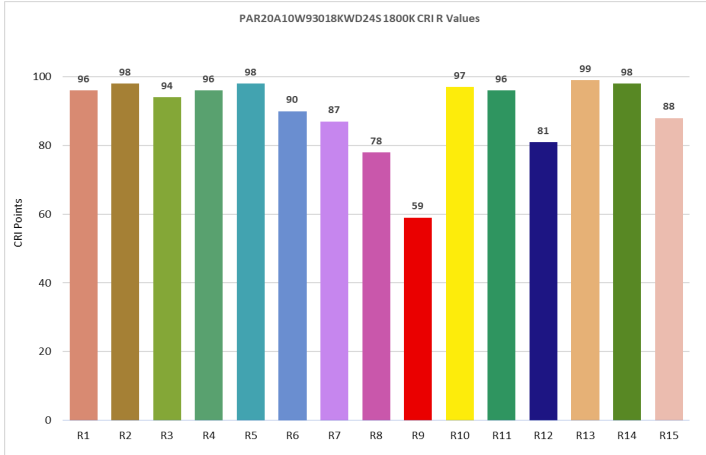


### SPECTRORADIOMETRIC CHART

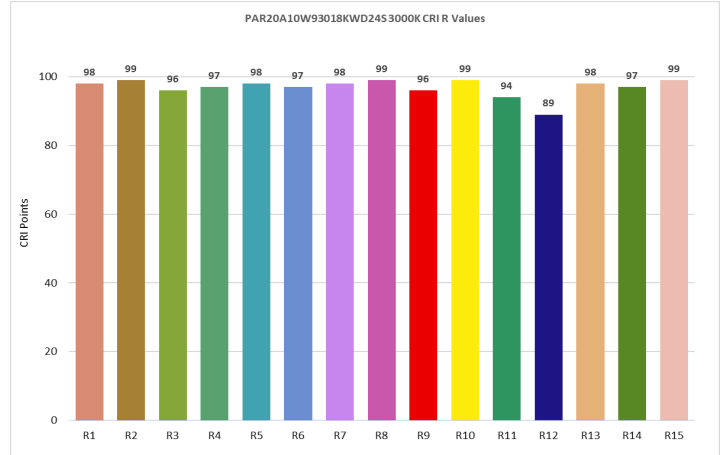


## CRI TEST

### 1800K

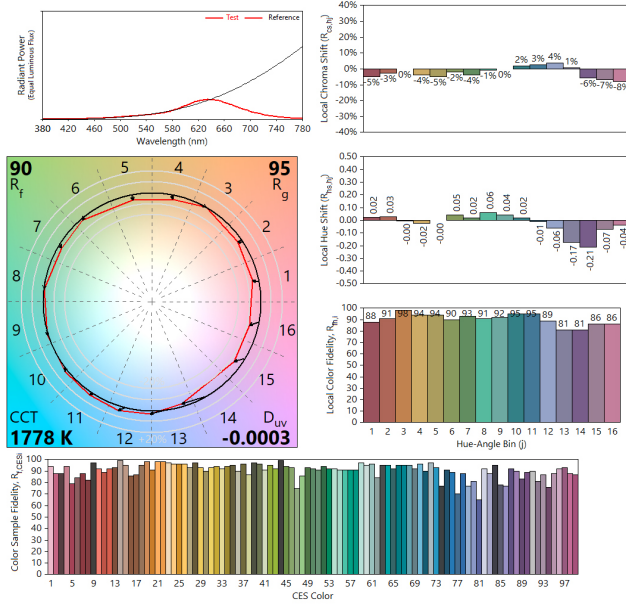


### 3000K

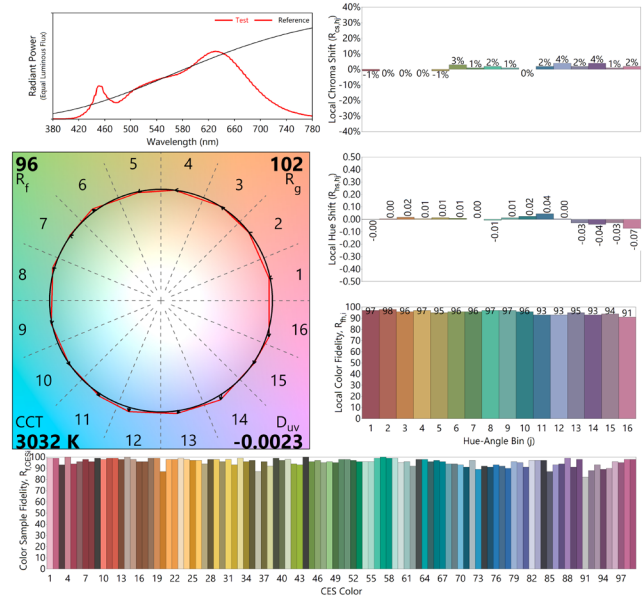


## TM30 TEST

### 1800K



### 3000K



MECHANICAL SPECS

