

QDP Series
Fast Jack connector



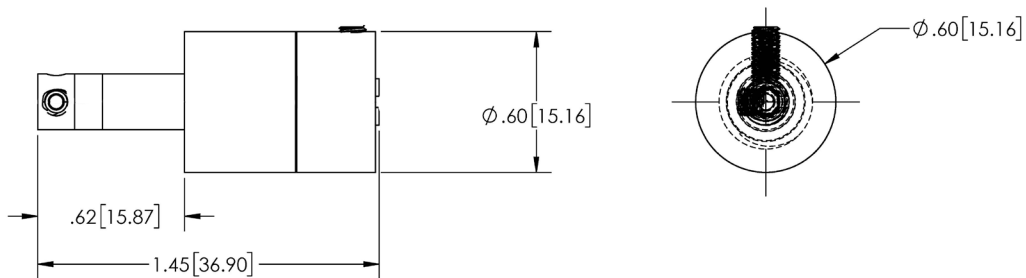
Connections	MR16 bi-pin base
Fast Jack	ø6mm stem with threaded hub assembly
Cable Gauge	18 GA cable
Multiple finishes	Satin Nickel, Antique brass, Brass, Bronze, Polished Nickel, Gun Metal, Black Satin



Fast Jack connector includes: FJ fixture connector ASM-plated, Allen wrench and extra screws.

Model #	Cable (gauge)	*Colors Available
QDP*-0000	18 GA	(SN)Satin Nickel, (AB)Antique Brass, (BR)Brass, (BZ)Bronze, (PN)Polished Nickel, (GM)Gun Metal, (BS)Black Satin

MODEL SPECIFICATIONS



INSTRUCTIONS

1. TRIM CABLE END TO REMOVE BUMPS AND LOOSE ENDS.
2. LEAVE CABLE RELIEF IN CONNECTOR.
3. REMOVE THE SHORT SET SCREW FROM CONNECTOR AND LOOSEN THE OTHER.
4. INSERT CABLE TRIMMED END INTO CONNECTOR, PUSH UNTIL THE INNER WIRE IS SHOWING IN HOLE 'A'.
5. RE-INSERT SHORT SET SCREW WITH ALLEN WRENCH AND TIGHTEN.
6. INSERT THE LONG SET SCREW, TIGHTEN, DO NOT OVERTIGHTEN.
7. TEST CONNECTOR FOR SHORTS, REPEAT IF ANY ARE SHORTED.

