

SI2X250WD1552PT2-1 Series CCT Select Controller



Input Voltage	15 - 52V DC
Max Input Power	250W @24V
Output Current	2 channels
CCT	4 Steps Selectable or 0-10V CCT tuning
Max. Current	10A per channel
PWM	Frequency meets Title 24

Our CCT selector controller is perfect for use with 2-channel LED loads, such as color tuneable LED tapes and COBs. It may be used in constant voltage or constant current configurations. Please see instructions.

CCT Selector Switch	SWITCH POSITIONS				
	1	2	3	4	5
Function	0-10V for CCT Tuning or Coolest CCT without connection	RP CCT 1	RP CCT 2	RP CCT 3	RP CCT 4

PWM Duty Cycle for QLUXF5000600LED92040							
Center CCT	4000K	3500K	3000K	2700K	2500K	2200K	2000K
4000K	100.00%	73.09%	54.23%	37.70%	22.22%	7.53%	0.00%
2000K WW	0.00%	26.91%	45.77%	62.30%	77.78%	92.47%	100.00%

PWM Duty Cycle for QLUXF50001200LED9LT						
Center CCT	5000K	4000K	3500K	3000K	2700K	2500K
CW	100.00%	62.38%	44.81%	28.31%	13.70%	0.00%
WW	0.00%	37.62%	55.19%	71.69%	86.30%	100.00%

SI2X250WD1552PT2-1 Series CCT Select Controller

PWM Duty Cycle for QLUXF5000800LED92065

Center CCT	6500K	5700K	5000K	4500K	4000K	3500K	3000K	2700K	2500K	2200K	2000K
6500K CW	100.00%	82.45%	70.36%	60.20%	49.78%	38.59%	28.69%	20.30%	12.62%	5.60%	0.00%
2000K WW	0.00%	17.55%	29.64%	39.80%	50.22%	61.41%	71.31%	79.70%	87.38%	94.40%	100.00%

PWM Duty Cycle for QLUXF5000800LED91865

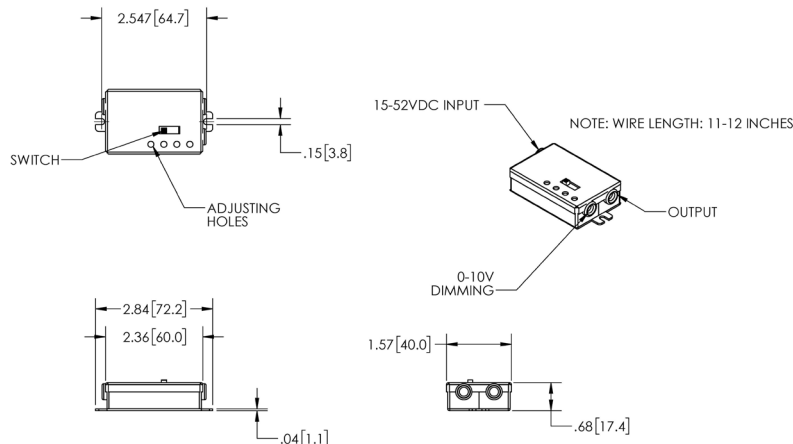
Center CCT	6500K	5700K	5000K	4500K	4000K	3500K	3000K	2700K	2500K	2200K	2000K	1800K
6500K CW	100.00%	84.08%	73.74%	64.94%	55.93%	46.17%	37.37%	29.80%	22.78%	16.22%	8.33%	0.00%
1800K WW	0.00%	15.92%	26.26%	35.06%	44.07%	53.83%	62.63%	70.20%	77.22%	83.78%	91.67%	100.00%

PWM Duty Cycle for QLUXF50001200LED92740

Center CCT	4000K	3500K	3000K	2700K
4000K CW	100.00%	62.27%	29.49%	0.00%
2700K WW	0.00%	37.73%	70.51%	100.00%

MODEL SPECIFICATIONS

MODEL	DIMENSIONS
SI2X250WD1552PT2-1	72.2 (64.7) x 40 x 17.4mm



SI2X250WD1552PT2-1 Series
CCT Select Controller

INSTRUCTIONS

Selectable CCT Module

MODEL: SI2X250WD1552PT2-1

Our selectable CCT module is perfect for use with 2-channel LED tapes and COBs

1. Connect the side with the two wires: **Black** (neg), and **Red** (pos) to a LED Driver.
2. Then connect the side with the three wires: **Red** (LED Common V+), **White** (Cool White LED negative), and **Yellow** (Warm White LED negative) to the LED load, such as LED tapes or COBs.
3. Turn on **POWER**
4. To adjust CCT click slider (A) to the desired CCT position shown on the chart.
Position 1
 - a. A coolest CCT, 100% duty cycle for CW output without connection of 0-10V dimmer or controller.
 - b. Connecting Pink & Purple wires to 0-10V dimmer's pink & purple wires accordingly, adjust dimmer to any CCT point that color tuneable tape can output.

Position 2, 3, 4, 5 can be preset to the desired PWM duty cycle for the different products CCT requirements by adjusting pots resistance. Please refer to the duty cycle tables for LTF tapes.

Another method is to use light meter to monitor light output CCT, adjust each pot to set to right CCT for each position 2, 3, 4, 5 respectively.

SI2X250WD1552PT2-1 Series
CCT Select Controller

