

**QLUXDOBAL29215W56LED9**  
DOB AC LED Boards

**QLUX DOB**



<b>Wattage</b>	15W
<b>Input</b>	120V AC 50/60Hz
<b>CRI</b>	>96
<b>THD</b>	<20%
<b>Max. Case temp. (tc)</b>	85°C Max.
<b>CCT Options</b>	2700K - 3000K
<b>Custom CCT</b>	Available
<b>Size</b>	292 x 38 x 1.1mm
<b>Dimming</b>	ELV, TRIAC
<b>Power Factor</b>	0.99
<b>Beam Angle</b>	160°



- Exceeds California Title 24 & JA8 requirements
- AC line voltage driver on board module; no external drivers or transformers required
- High efficiency lumen output: >75 lm/W, TLCI-2012 93
- Smooth dimming with ELV & TRIAC dimmers
- CCT options 2700K, 3000K, Custom
- Optional 0-10V dimming
- 120V, 220 - 240V AC input with optional voltage converter
- LM-80 compliant LEDs

**FEATURES**

- High color rendering index (CRI) >96
- Tight binning 3 step mac adams ellipses
- Low heat generation, easy thermal management
- L70>60,000 hours
- Extendable

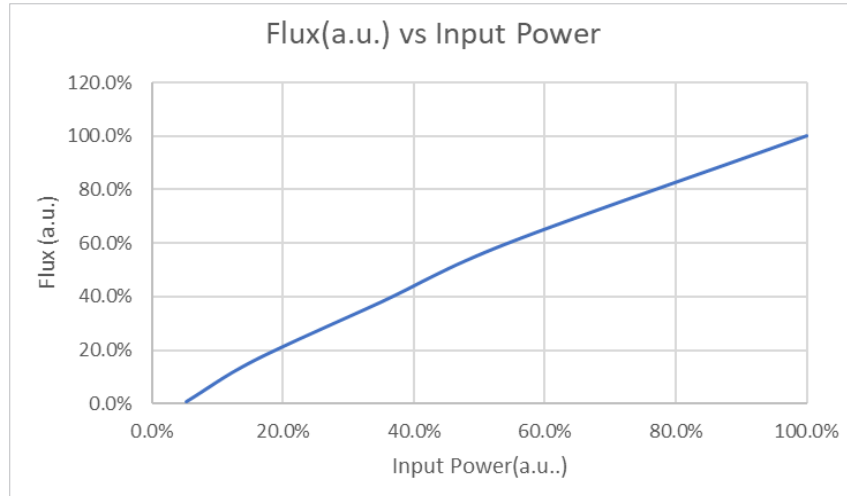
**APPLICATIONS**

- New or retrofit OEM fixtures
- Indoor or outdoor applications
- Architectural and commercial
- Flush mount and recessed fixtures

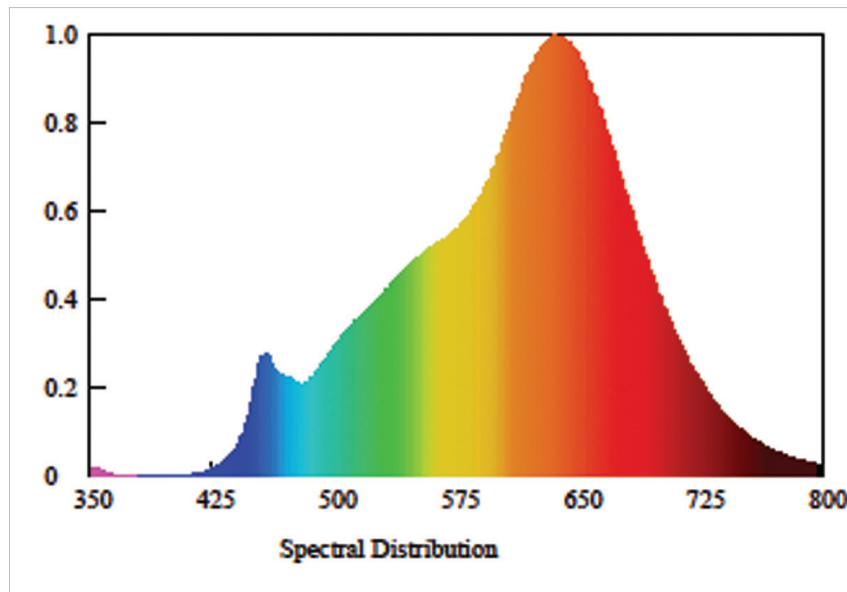
**MODEL SPECIFICATIONS**

Model Number	Input	Wattage	CCT	Lumens	Dimensions
QLUXDOBAL29215W56LED927	120V AC 50/60Hz	15W	2700K	1168lm	292 x 38 x 1.1mm
QLUXDOBAL29215W56LED930		15W	3000K	1200lm	

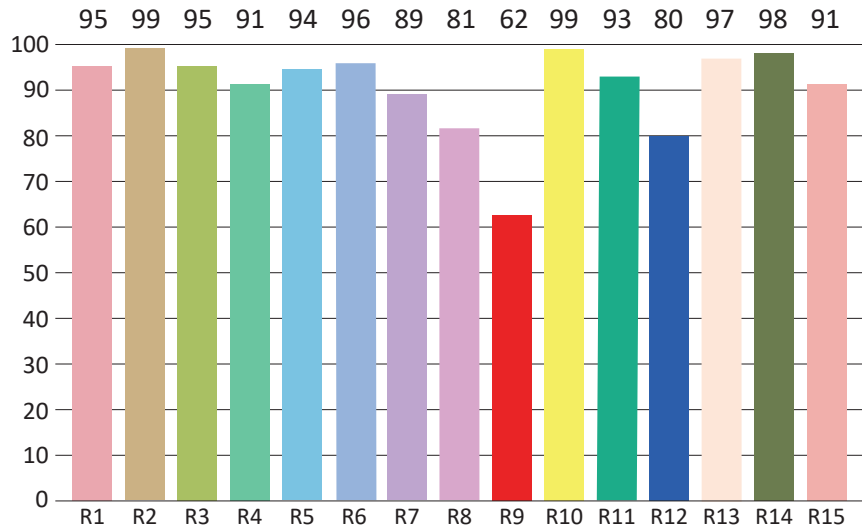
### DIMMING CURVES



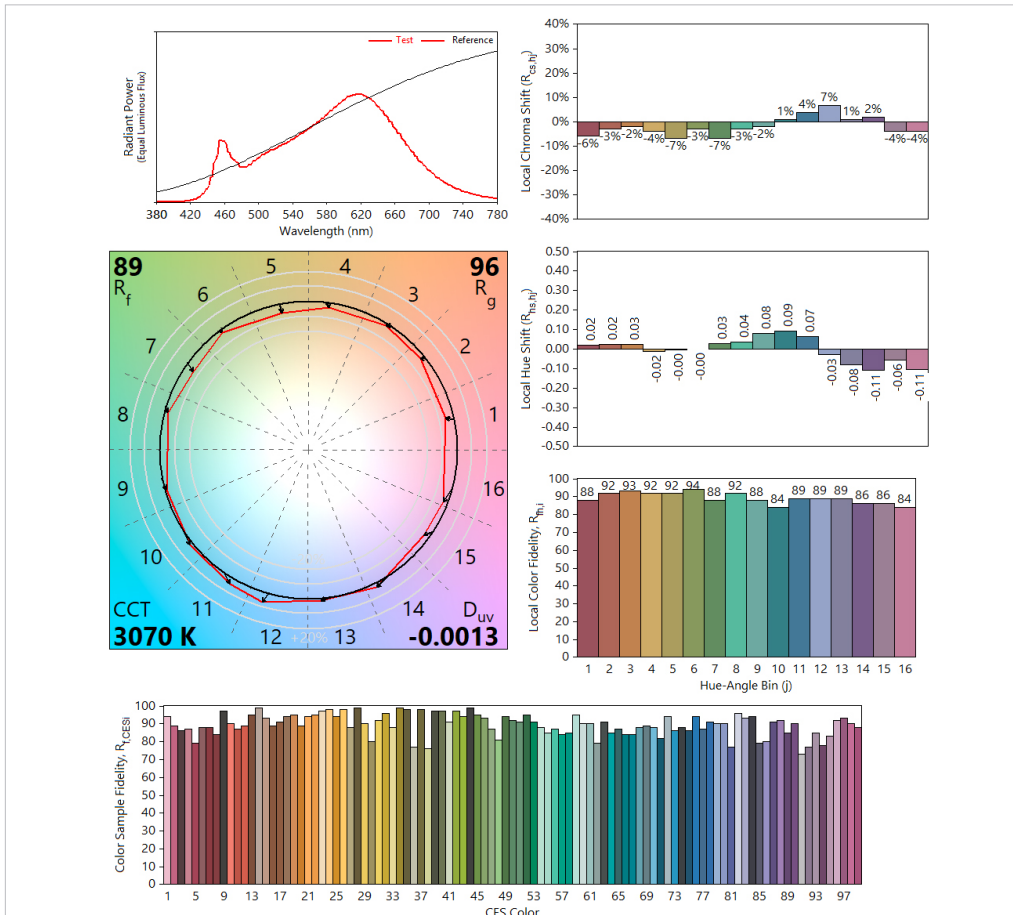
### SPECTRORADIOMETRIC CHARACTERISTICS



### CRI TEST



### TM30 CHART



**ABSOLUTE MAXIMUM RATINGS (Ta=25°C)**

Parameter	Symbol	Value	Unit
Voltage	V in	132	Vac
Operating Temperature (ta)	---	-35~+50	°C
LED Solder Temperature	Ts	110	°C
Storage Temperature	Tstg	-40~+100	°C
ESD Sensitivity (HBM)	---	±4000	V
Surge	---	2500	Vac

**MECHANICAL SPECS**

