

# 15W WIRELESS DL215W350CWZ Series

## 2 Channel Constant Current

### LITESTREAM D



Efficiency	>80%
Power Factor	>0.90
Case TC	85°C Max.
Protection	Input / Output
Storage	-30°C / +90°C
Humidity	95% RH Max.
IP Rating	IP64
Class	Class 2 Power Supply
Dimming	Wireless
Output Voltage or Constant Current	350mA



#### LITESTREAM™ SMART CONTROLLER WIZ

LiteStream™ D Controller modules are compact and easy to install for IoT applications in need of multi-channel, dimming, color tuning, zone and RGB control capabilities.

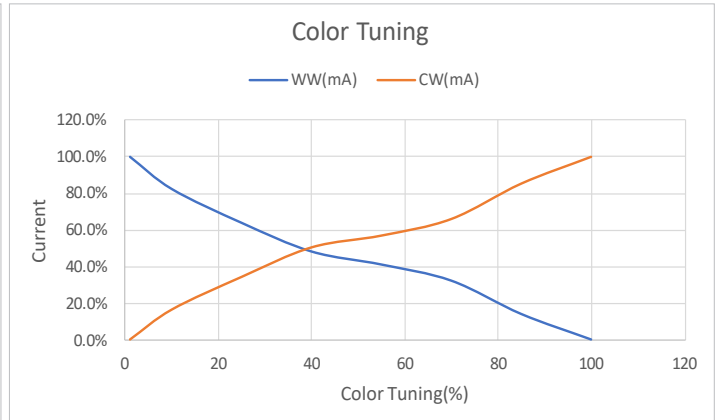
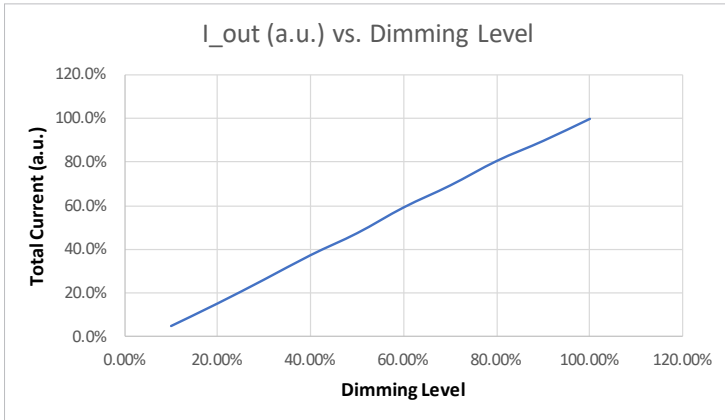
#### FEATURES

- 2 Channel outputs for smart color tuneable LED lighting
- Rated for 24V DC/AC input.
- Works with LTF DC, ELV & magnetic LV power supply
- Smooth, flicker free dimming.
- Title 24 Compliant.
- Excellent choice to integrate in low voltage LED fixtures.
- 200-700mA constant current options.
- Aluminum casing for optimal heat dissipation.
- Isolated output power per NEC and UL safety requirements
- UL recognized/ listed, meets UL 8750, 1310 requirements.
- Auto-reset ; short circuit, overload and thermal protection.
- Low profile, small form factor, junction box mountable
- Class 2 power supply.
- Efficient, High power factor > 0.9.

#### MODEL SPECIFICATIONS

CONSTANT CURRENT					
Model Number	Input Voltage	Wattage	Output Voltage	Output Current	Available Form Factor
DL215W350C3336WZ2-0000	24V DC/AC	15W	33 - 36V DC	350mA (x2)	R6, R7
DL215W350C2443WZ2-0000	0-50KHz	15W	24 - 43V DC	350mA (x2)	R6, R7

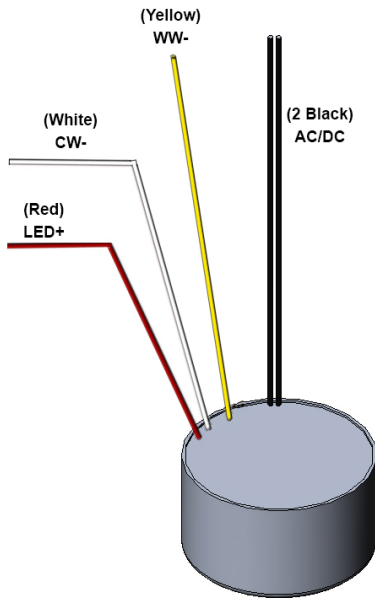
### DIMMING CURVES



### WIRING DIAGRAM

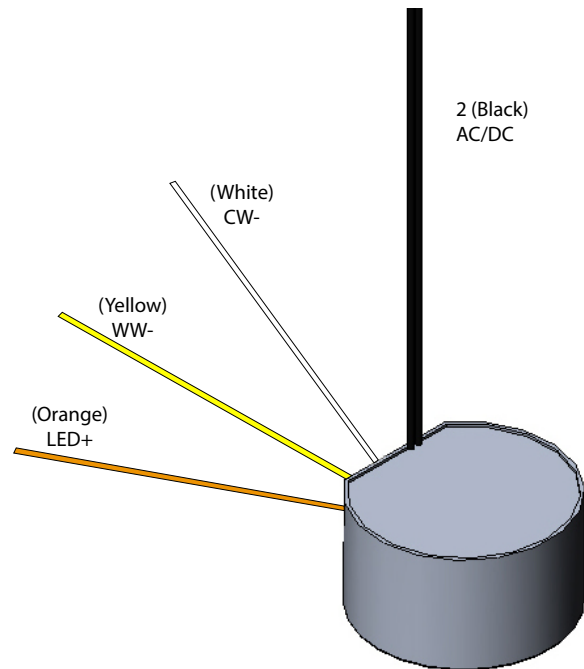
#### R6

Color	Connection
Red Wire	LED+
White Wire	CW-
Yellow Wire	WW-
2 Black Wires	AC/DC



#### R7 (D-shape)

Color	Connection
Orange Wire	LED+
White Wire	CW-
Yellow Wire	WW-
2 Black Wires	AC/DC



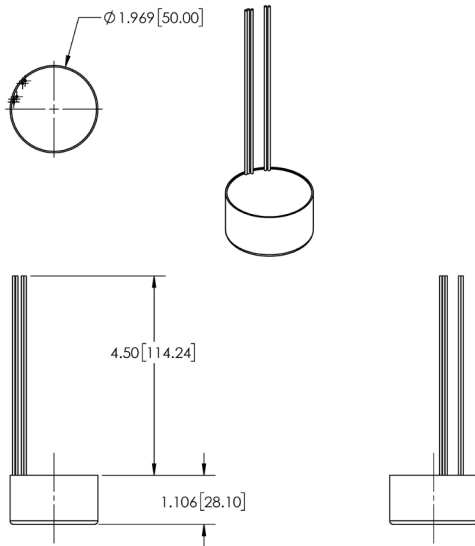
**COMPATIBLE LTF COBi**

Model Number	Size	Wattage	CCT	CRI/R9	Lumens
LTCOBi1616905727	16 x 16mm	12W	2200K to 6600K	90+/64+	1080lm

**MECHANICAL SPECS**

FORM FACTOR	DIMENSIONS
R6	1.969 OD x 28.10mm
R7 (D shape)	1.969 OD x 28.10mm

**R6**



**R7**

