



SunLight2™ PAR38

SunLight2™ is a series of LED bulbs optimized for architectural lighting applications with flicker-free dimming operation. Its high CRI & full spectrum light provides exceptional color accuracy using patented LED technology.

Features

- **Light Quality** - Superior color accuracy & pure white index.
- **CCT** - Single CCT 6500K. Dim-to-Warm models available.
- **Low Flicker Index** - Flicker-Free operation.
- **Efficiency** - More efficient than halogen lamps.
- **Protection** - Temp protection enabled when overheated.
- **Compatibility** - Trailing & leading edge phase cut dimmers.
- **Warranty** - 3 years / 30,000 hours rating.

CCT (Single)	6500K
Max. Tc (C°)	90°
Ambient Temp. (C°)	40°
Power Factor	0.974
CRI, R9	90, 70
Lumens	1200 lm
Flicker Index	0.01
Percent Flicker	< 1%
Dimming	Phase Dimmable
In-Rush Cycle to Cycle	< 1 Amp



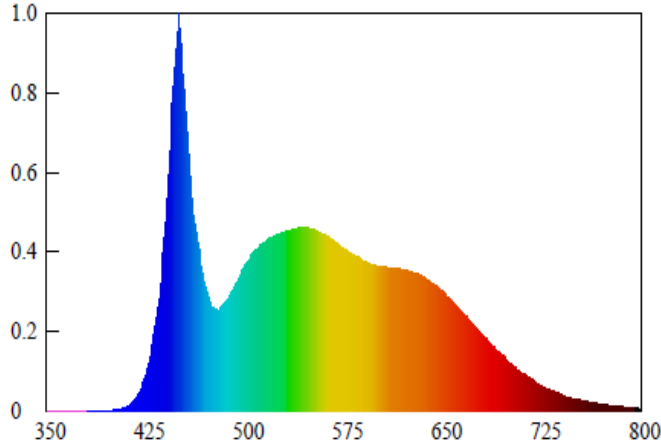
Applications

- Architectural & Residential Lighting.
- Retail & Hospitality Lighting.
- Track Lighting; New and Retrofit.
- Pendants & Downlights.
- Landscape & Plant Lighting.
- Indoor & Outdoor Applications.
- Suitable for damp locations.

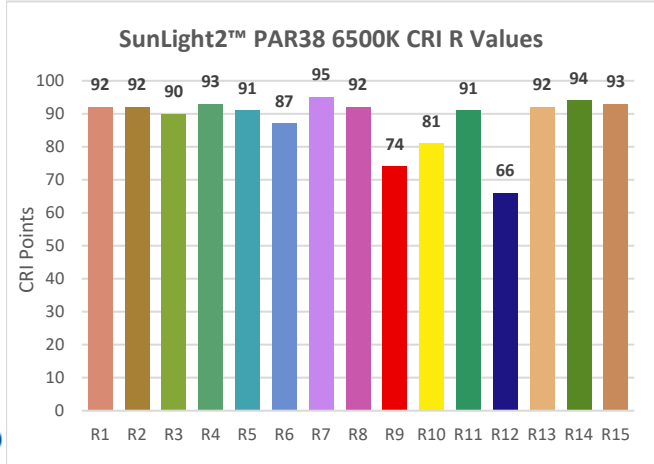
Electrical Specifications PAR38 Single CCT 6500K

PAR20						
Model Number	Watts	Input V	CCT	Lumens	Beam Angle	Case Finishes
PAR38A18W60K36W	18W	120V AC 60Hz	6500k	1200 lm	36°	W = White S = Silver B = Black
PAR38A18W60K36S						
PAR38A18W60K36B						
<i>Request for Custom Finishes</i>						

Spectroradiometric Characteristics



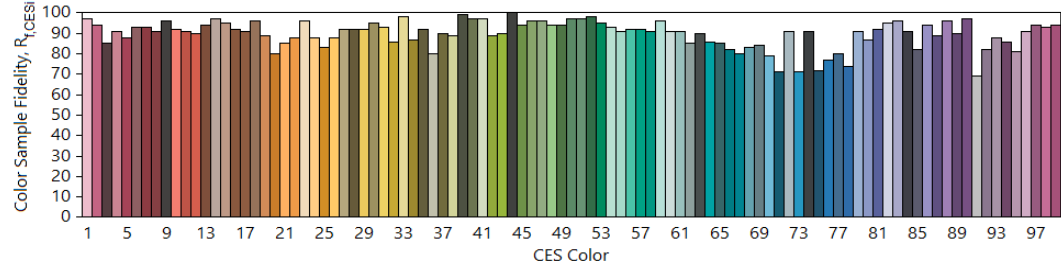
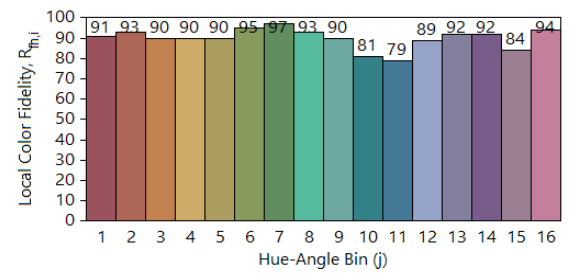
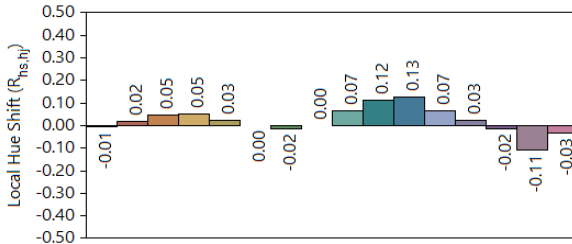
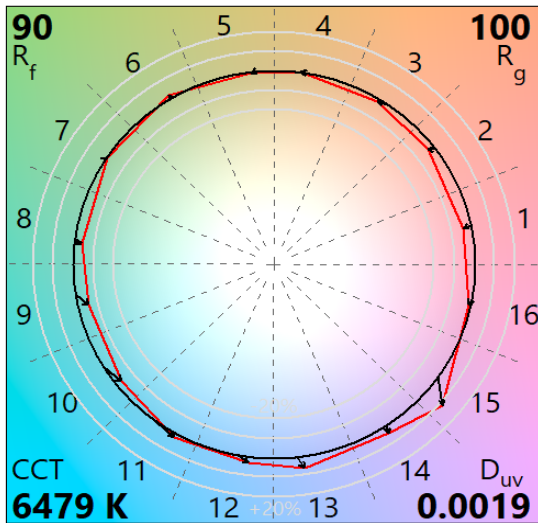
CRI Test Results PAR30 Single CCT 6500K



CRI

R1= 92	R2= 92	R3= 90	R4= 93	R5= 91	R6= 87	R7= 95	R8= 92
R9= 74	R10= 81	R11= 91	R12= 66	R13= 92	R14= 94	R15= 93	Re= 96

IES TM-30-18 Report PAR30 Single CCT 6500K



Dimming Characteristics PAR38 Single CCT 6500K

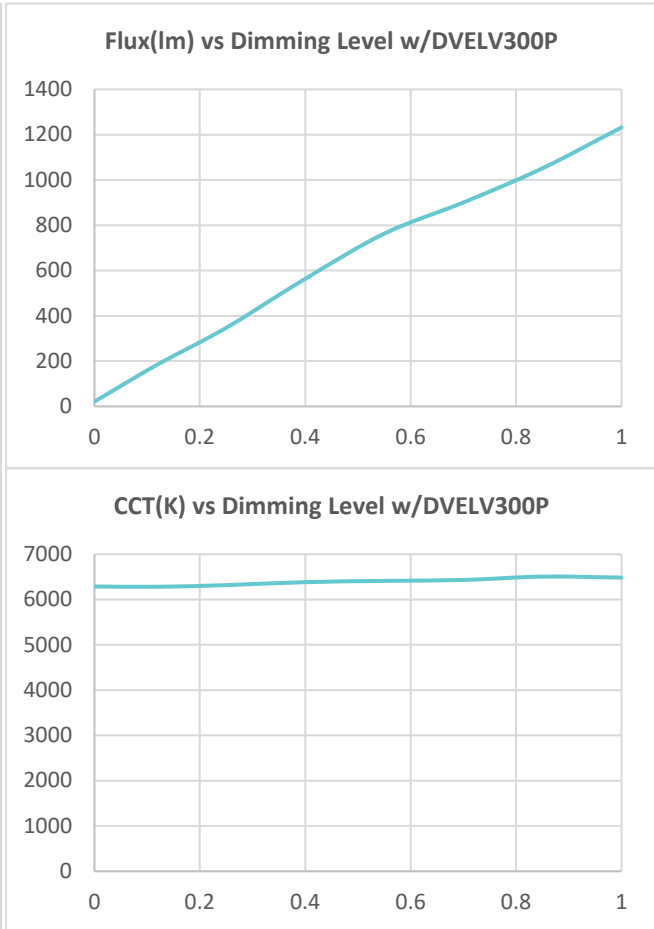
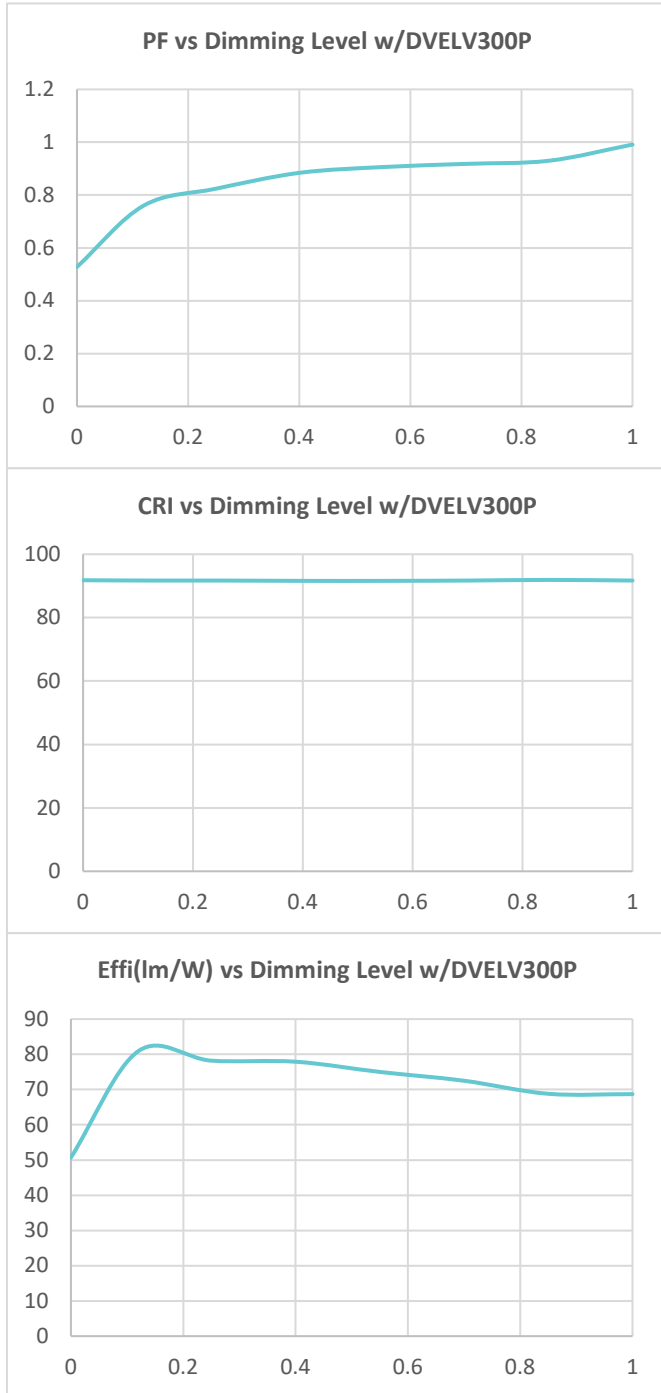
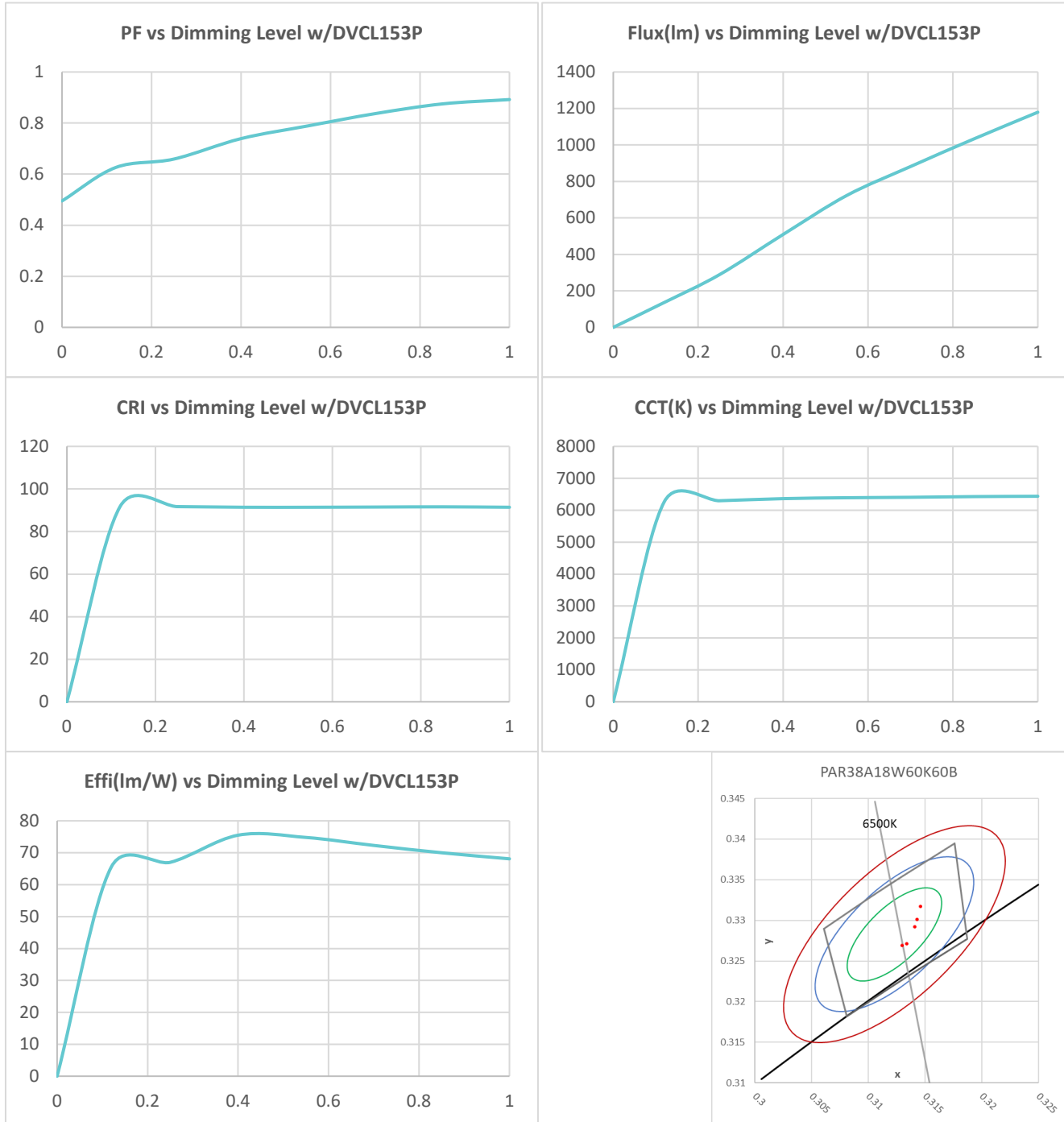


Image of SunLight2™ PAR20 6500K Dimmed

Dimming Characteristics PAR38 Single CCT 6500K



Mechanical Specifications PAR38

Bulb	
Bulb Size	123mm X 119.50mm OD
Bulb Weight	372g

Box	
Box Size	N/A
Box Weight	N/A

