



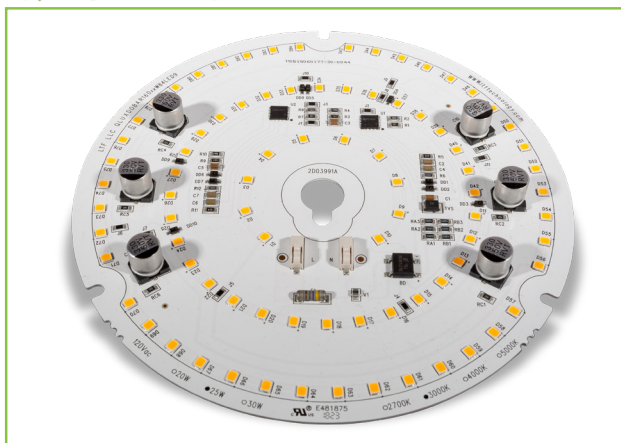
L.T.F.

QLUX DOB AC Line Voltage LED Series



QLUXDOB16025W84LED9 25W 160mm Round LED Board

QLUX DOB



Wattage	25W
Power Factor	0.99
CRI	92.1
CCT Options	2700K, 3000K
Luminous Flux	≈ 2128 lm
Efficacy	≈ 85 lm/W
Number of LEDs	84
Beam Angle	160°
Dimensions	160mm (OD)
Dimming	ELV & Triac Optional 0-10V



RoHS



NOTE: Measurements based on 3000K CCT model.

FEATURES

- Driver On Board technology - No external LED driver required.
- CCT options 2700K, 3000K.
- Superior color rendering ≈ 92.6 CRI .
- High efficacy lumen output up to ≈ 117 lm/W.
- LM-80 compliant LEDs.
- Tight binning 3 step Mac Adam Ellipses.
- Uniform & crisp light source intensity.
- Hot spot free design.
- California Title 24 Compliant.

- Extra thin low profile.
- Low heat generation, easy thermal management.
- Easy to fit in new design or retrofit applications.
- 277V AC option available.
- L70 > 60,000 Hours



APPLICATIONS

- Residential and Commercial
- New or Retrofit OEM Fixtures

ELECTRICAL SPECIFICATIONS

Model #	Input	Wattage	CCT Options	Luminous Flux
QLUXDOBAR16025W84LED927	120V AC 0.21A 50/60Hz	25W	2700K	≈ 2100 lm
QLUXDOBAR16025W84LED930			3000K	≈ 2128 lm



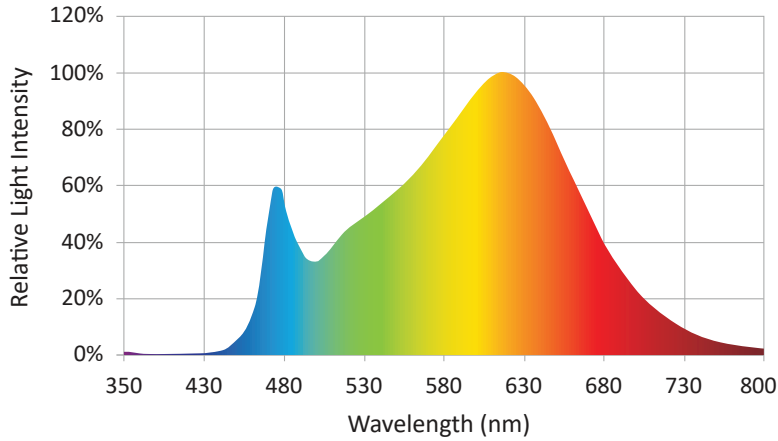
L.T.F.

QLUX DOB AC Line Voltage LED Series



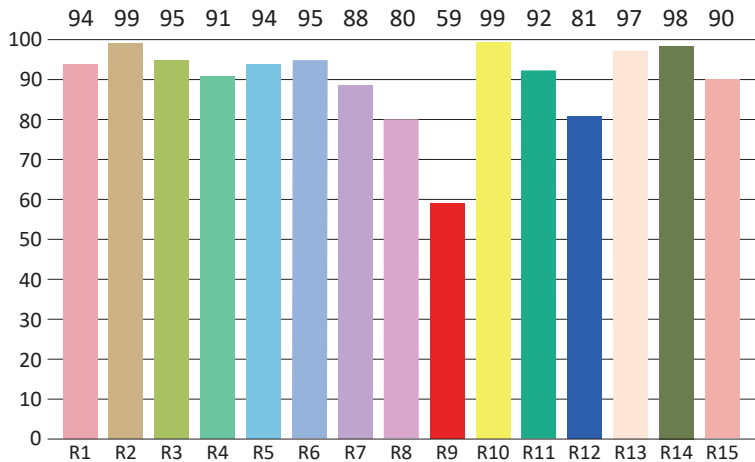
**QLUXDOB16025W84LED9
25W 160mm Round LED Board**

SPECTRORADIOMETRIC CHARACTERISTICS - 3000K



Luminous Flux: 2128 lm
Radiant Flux: 7.589 W
Efficacy: 85.1 lm/W
Nominal CCT: ANSI_F3000K
 $x_0=0.4400$ $y_0=0.4030$
Chromaticity Coordinates:
 $x=0.4285$ $y=0.3944$ $u'=0.2493$ $v'=0.5162$
Chromaticity Difference: -0.00272 Duv
CCT: 3067 K

CRI TEST RESULTS - 3000K



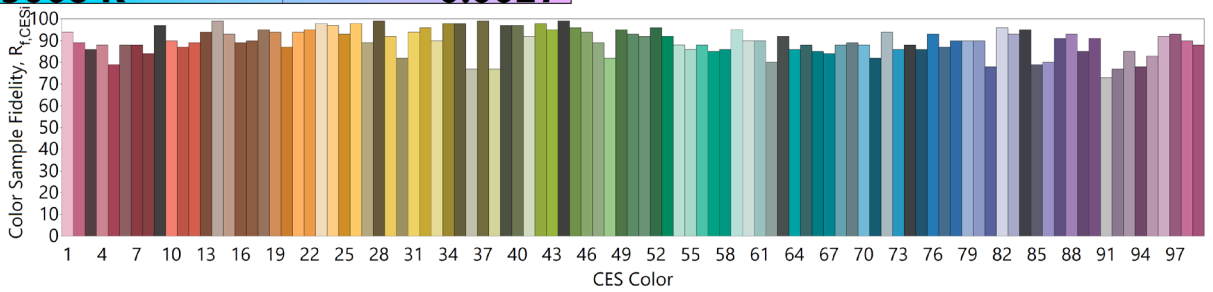
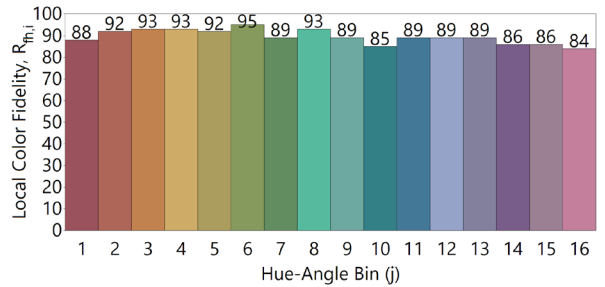
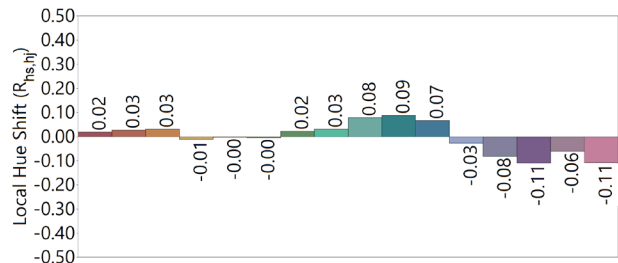
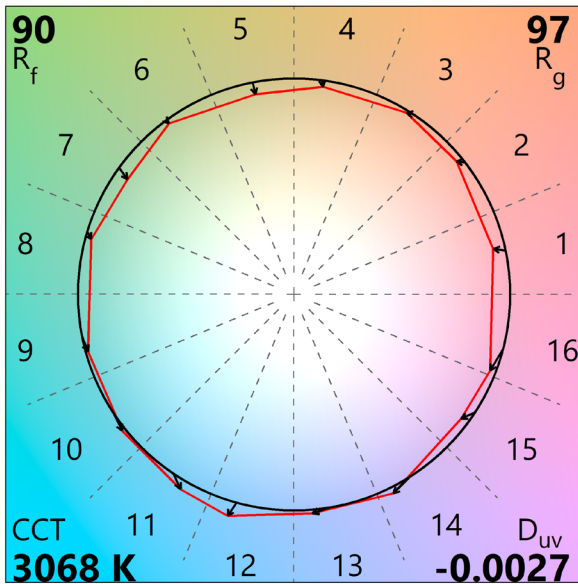
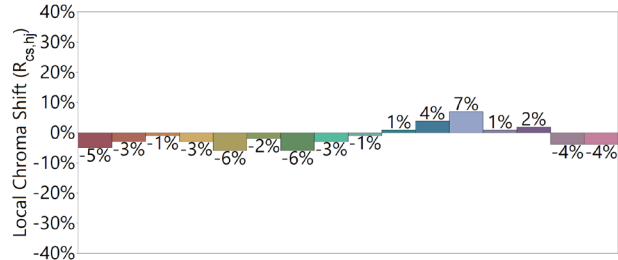
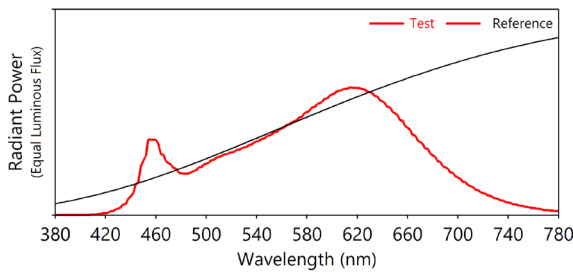
Color Rendering Index (CRI): 92.1
Dominant Wavelength: 582.0 nm(E)
Peak Wavelength: 615nm
Colour Fidelity Index: Rf=88
Gamut Index: Rg=96
Color Purity: 0.4721
Color Ratio: Kr=44.1% Kg=47.0% Kb=8.9%
Color Tolerance (SDCM): 5.8
Bandwidth: 155.5nm
Photosynthetically Active Radiation (PAR): 7.18W
Photosynthetic Photon Flux (PPF): 35.11 $\mu\text{mol/s}$

R1=94	R2=99	R3=95	R4=91	R5=94	R6=95	R7=88	R8=80
R9=59	R10=99	R11=92	R12=81	R13=97	R14=98	R15=90	Re=90



QLUXDOB16025W84LED9
25W 160mm Round LED Board

IES TM-30-18 Test Results - 3000K





L.T.F.

QLUX DOB AC Line Voltage LED Series



QLUXDOB16025W84LED9
25W 160mm Round LED Board

ABSOLUTE MAXIMUM RATINGS (Ta=25°C)

Parameter	Symbol	Value	Unit
Voltage	V in	132	Vac
Operating Temperature	---	-35~+50	°C
LED Solder Temperature	Ts	110	°C
Storage Temperature	Tstg	-40~+100	°C
ESD Sensitivity (HBM)	---	±4000	V
Surge	---	2500	Vac

MECHANICAL SPECIFICATIONS

LED Board Dimensions
160mm (OD)

