



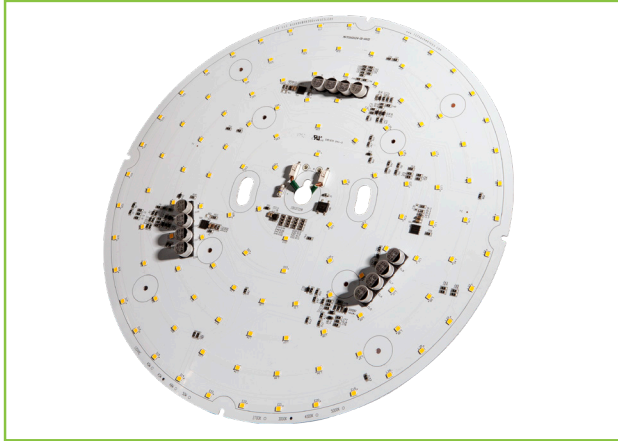
L.T.F.

DOB AC Line Voltage LED Boards



Dimmable 45W Round 300mm (OD) QLUXDOBAR30045W123LED DOB Series

QLUX DOB



Wattage	45W
Power Factor	0.9935
CRI	94.8
CCT Options	2700K - 4000K
Luminous Flux	≈ 4174 lm
Efficacy	≈ 90.5 lm/W
Number of LEDs	123
Beam Angle	160°
Dimensions	300mm OD
Dimming	ELV & Triac Optional 0-10V

NOTE: Measurements based on 3000K CCT model.



RoHS



FEATURES

- Driver On Board technology - No external LED driver required.
- CCT options 2700K - 4000K.
- Superior color rendering ≈ 94.8 CRI .
- High efficacy lumen output up to ≈ 90.5 lm/W.
- LM-80 compliant LEDs.
- Tight binning 3 step Mac Adam Ellipses.
- Uniform & crisp light source intensity.
- Hot spot free design.
- California Title 24 Compliant.
- Extra thin low profile.
- Low heat generation, easy thermal management.
- Easy to fit in new design or retrofit applications.
- 277V AC option available.
- L70 > 60,000 Hours

APPLICATIONS

- Residential and Commercial
- New or Retrofit OEM Fixtures

ELECTRICAL SPECIFICATIONS

Model #	Input	Wattage	CCT Options	Luminous Flux
QLUXDOBAR30045W123LED927	120V AC 0.384A 50/60Hz	45W	2700K	≈ 4139 lm
QLUXDOBAR30045W123LED930			3000K	≈ 4174 lm
QLUXDOBAR30045W123LED935			3500K	≈ 4200 lm
QLUXDOBAR30045W123LED940			4000K	≈ 4220 lm

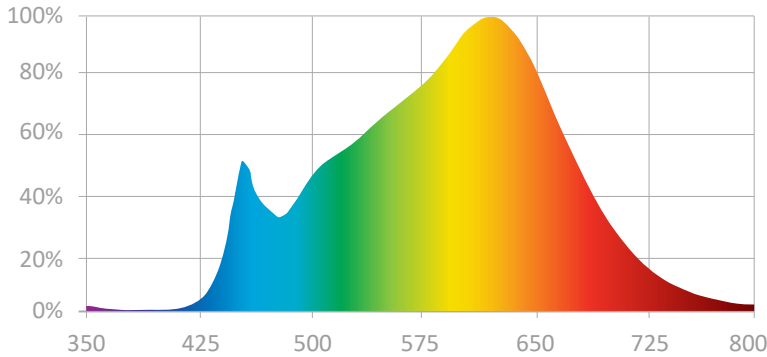


L.T.F.

DOB AC Line Voltage LED Boards

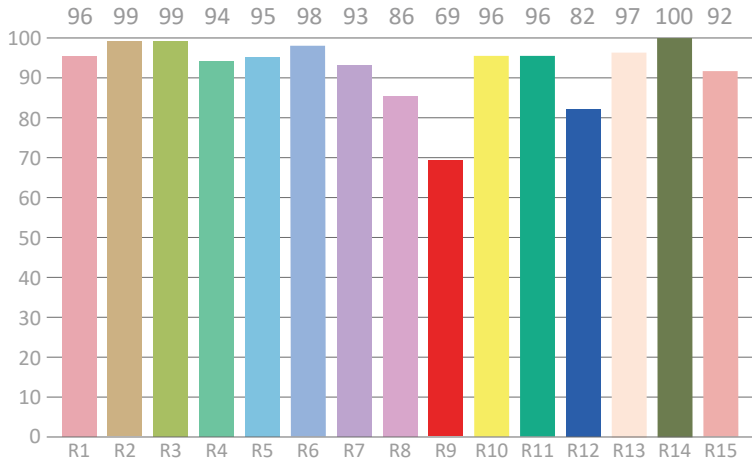
**Dimmable 45W Round 300mm (OD)
QLUXDOBAR30045W123LED DOB Series**

SPECTRORADIOMETRIC CHARACTERISTICS - 3000K



Luminous Flux: 4174.07 lm
Radiant Flux: 14.865 W
Efficacy: 90.5 lm/W
Nominal CCT: ANSI_F3000K
 $x_0=0.4400$ $y_0=0.4030$
Chromaticity Coordinates:
 $x=0.4304$ $y=0.4057$ $u'=0.2457$ $v'=0.5211$
Chromaticity Difference: +0.00161 Duv
CCT: 3126 K

CRI TEST RESULTS - 3000K



Color Rendering Index (CRI): 94.8
Dominant Wavelength: 580.0 nm(E)
Peak Wavelength: 625nm
Colour Fidelity Index: Rf=89
Gamut Index: Rg=96
Color Purity: 0.5116
Color Ratio: Kr=42.7% Kg=48.2% Kb=9.1%
Bandwidth: 174.1nm
Photosynthetically Active Radiation (PAR): 14.02W
Photosynthetic Photon Flux (PPF): 68.82 $\mu\text{mol/s}$

R1=96	R2=99	R3=99	R4=94	R5=95	R6=98	R7=93	R8=86
R9=69	R10=96	R11=96	R12=82	R13=97	R14=100	R15=92	Re=93

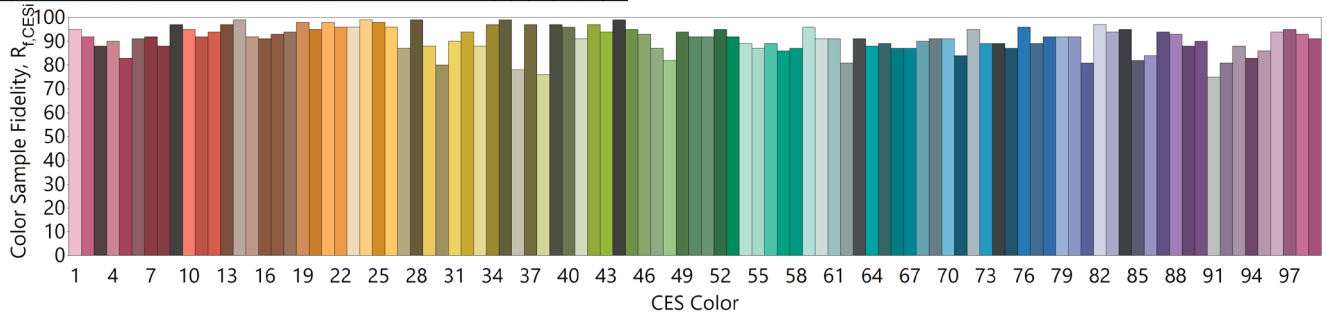
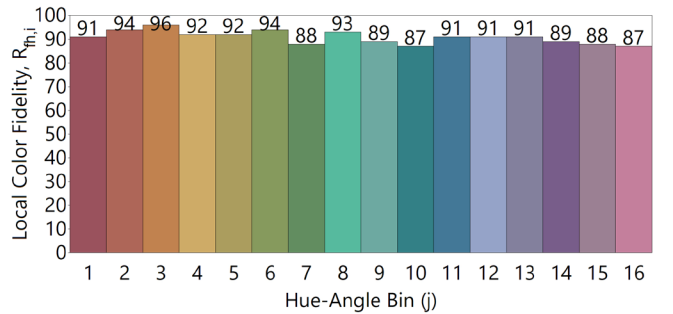
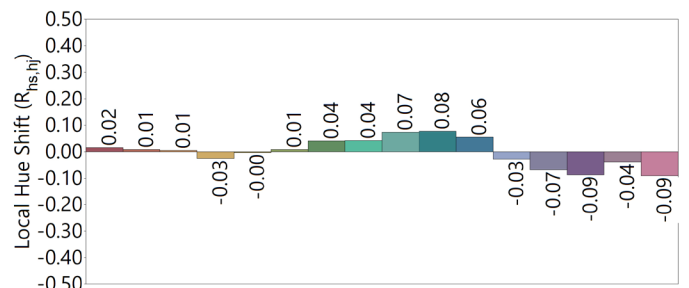
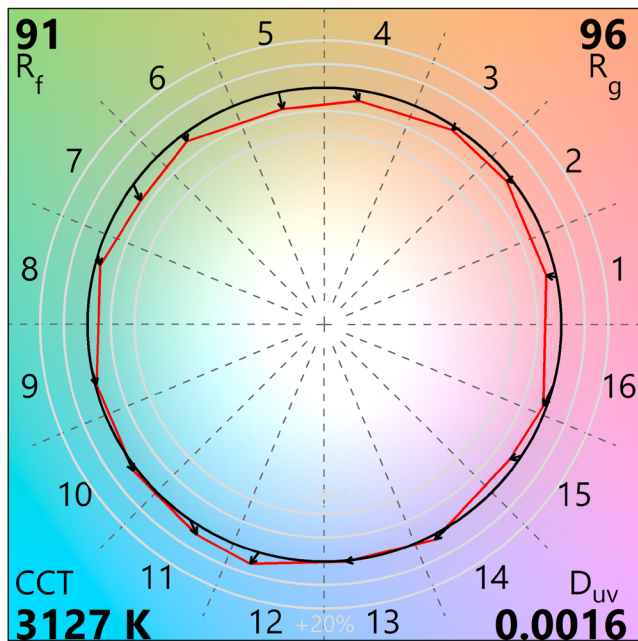
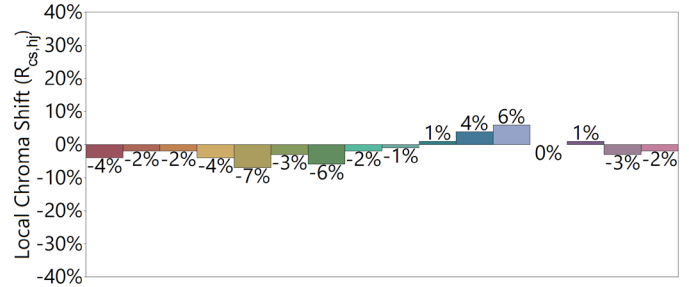
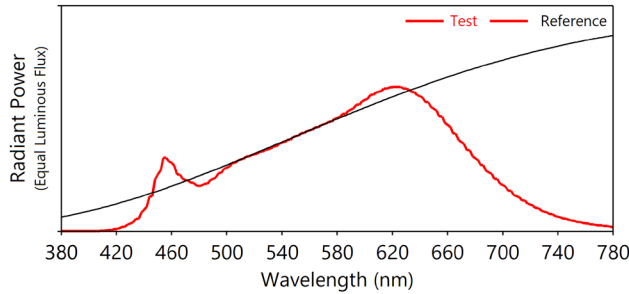


L.T.F.

DOB AC Line Voltage LED Boards

**Dimmable 45W Round 300mm (OD)
QLUXDOBAR30045W123LED DOB Series**

IES TM-30-18 Test Results - 3000K



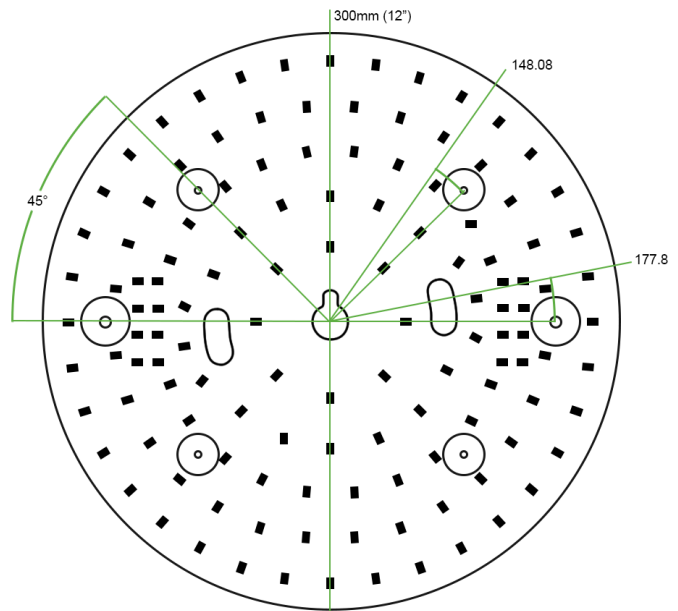


PERCENT FLICKER WHEN TRIAC DIMMING AT 120V AC, 60Hz

Dimmer		Percent Flicker		Flicker Index	
Brand	Model	@ 100% dim	@ 20% dim	@ 100% dim	@ 20% dim
Lutron	CT-600P	18.6%	20.9%	0.048	0.053
	CTCL-153P	17.9%	21.4%	0.049	0.054
	DVCL-153P	18.2%	22.5%	0.051	0.055
	MACL-153M	19.2%	23.6%	0.053	0.060
	S-600P	18.6%	26.0%	0.052	0.060
	S-603P	18.4%	21.2%	0.047	0.052
	SCL-153P	17.6%	21.1%	0.049	0.054
	TGCL-153P	19.3%	23.5%	0.050	0.057
Leviton	6631	18.4%	24.4%	0.048	0.057
	6674	17.2%	24.4%	0.046	0.053
	IPL06	18.5%	24.9%	0.050	0.056

MECHANICAL SPECIFICATIONS

LED Board Dimensions
300mm OD



ABSOLUTE MAXIMUM RATINGS (Ta=25°C)

Parameter	Symbol	Value	Unit
Voltage	V in	132	Vac
Operating Temperature	---	-35~+50	°C
LED Solder Temperature	Ts	110	°C
Storage Temperature	Tstg	-40~+100	°C
ESD Sensitivity (HBM)	---	±4000	V
Surge	---	2500	Vac