



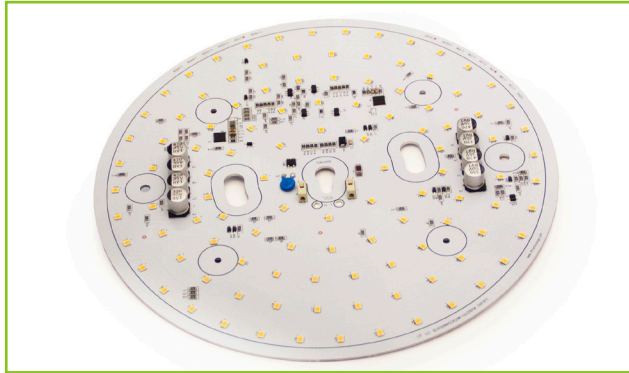
**L.T.F.**

## DOB AC Line Voltage LED Boards



### Dim-to-Warm 30W Round 228mm (OD) QLUXDOBAR22830W110LEDWDM DOB Series

## QLUX DOB



<b>Wattage</b>	30W
<b>Input</b>	120V AC 50/60 Hz
<b>CRI</b>	90+
<b>CCT</b>	3000K dims to 1800K
<b>Custom CCT</b>	Available
<b>Size</b>	228mm (OD)
<b>Dimming</b>	ELV, Triac
<b>Optional Dimming</b>	0-10V
<b>Beam Angle</b>	160°



**RoHS**



## FEATURES

- Exceeds California Title 24 requirements
- AC line voltage driver on board module; No external drivers or transformers required
- Dim-to-Warm feature; 3000K changes to a warm cozy 1800K when dimmed
- High efficacy lumen output: > 80 lm/W
- Smooth dimming with ELV & Triac dimmers
- Optional 0-10V dimming
- 220-240V, 277V AC input with optional voltage converter
- LM-80 compliant LEDs

- High Color Renedering Index (CRI) 90+
- Tight binning 3 Step Mac Adam Ellipses
- Low heat generation, easy thermal management
- L70 > 60,000 Hours



## APPLICATIONS

- New or retrofit OEM fixtures
- Indoor or outdoor applications
- Architectural and commercial
- Flush mount and recessed fixtures



## AVAILABLE CONFIGURATIONS

Model Number	CRI	CCT		Lumens
		CCT (no dim)	CCT (100% dim)	
QLUXDOBAR22830WLED110WDM	90+	3000K	1800K	2400lm

Custom CCT available

[1] Luminous flux and efficacy are typical value, measured by an integrated sphere at 25°C, tolerance: ± 10%;

[2] Ra/CRI is measured with tolerance: ± 2;

[3] Tolerance of power: ± 1W.

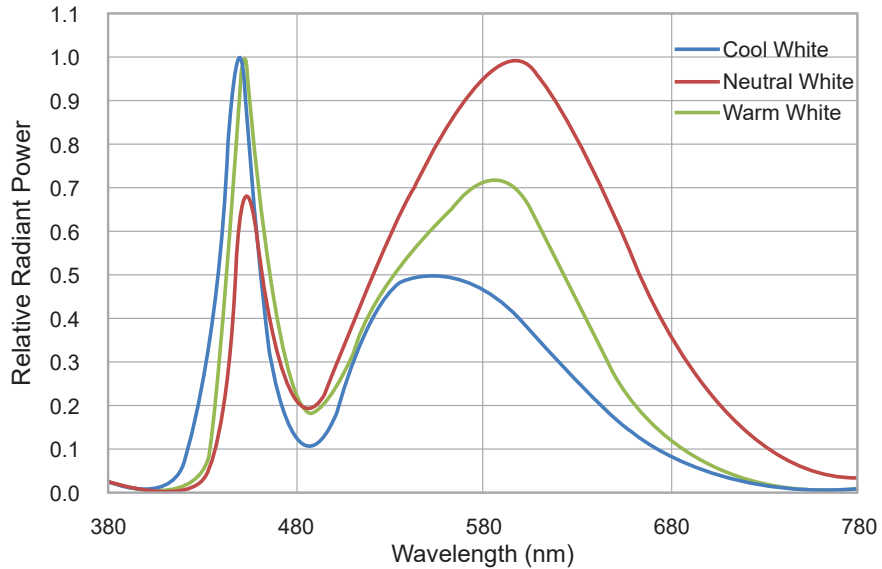


**L.T.F.**

## DOB AC Line Voltage LED Boards

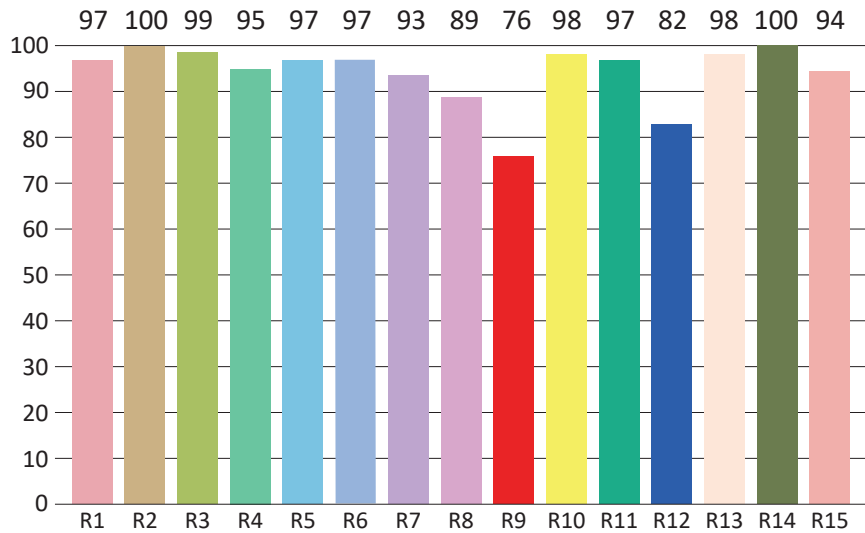
**Dim-to-Warm 30W Round 228mm (OD)  
QLUXDOBAR22830W110LEDWDM DOB Series**

### SPECTRORADIOMETRIC CHARACTERISTICS



\* Test result shown based on 3000K CCT

### CRI TEST RESULTS



R1=97	R2=100	R3=99	R4=95	R5=97	R6=97	R7=93	R8=89
R9=76	R10=98	R11=97	R12=82	R13=98	R14=100	R15=94	

\* Test result shown based on 3000K CCT

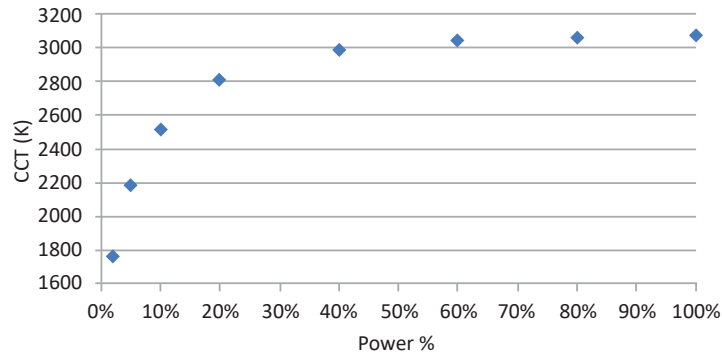


**L.T.F.**

## DOB AC Line Voltage LED Boards

**Dim-to-Warm 30W Round 228mm (OD)  
QLUXDOBAR22830W110LEDWDM DOB Series**

### CCT (K) VS. DIMMING PERCENTAGE CURVE



### ABSOLUTE MAXIMUM RATINGS (Ta=25°C)

Parameter	Symbol	Value	Unit
Voltage	V in	132	Vac
Operating Temperature	---	-35~+50	°C
LED Solder Temperature	Ts	110	°C
Storage Temperature	Tstg	-40~+100	°C
ESD Sensitivity (HBM)	---	±4000	V
Surge	---	2500	Vac

### MECHANICAL SPECIFICATIONS

