



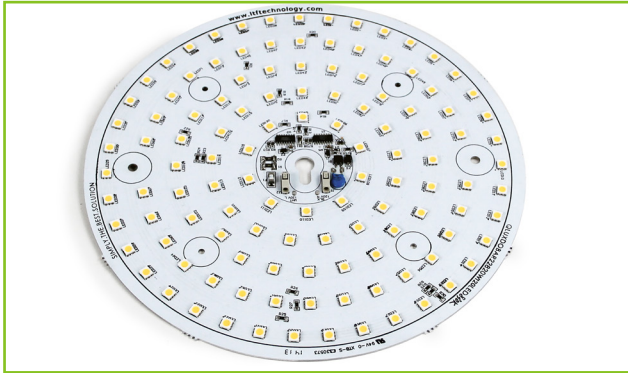
**L.T.F.**

## DOB AC Line Voltage LED Boards



### Dimmable 20W Round 228mm (OD) QLUXDOBAR22820W120LED DOB Series

## QLUX DOB



<b>Wattage</b>	20W
<b>Input</b>	120V AC 50/60 Hz
<b>CRI</b>	80, 90+
<b>CCT Options</b>	2700K, 3000K
<b>Custom CCT</b>	Available
<b>Size</b>	228mm (OD)
<b>Dimming</b>	ELV, Triac
<b>Optional Dimming</b>	0-10V
<b>Beam Angle</b>	160°



**RoHS**



### FEATURES

- AC line voltage driver on board module; No external drivers or transformers required
- High efficacy lumen output: > 80 lm/W
- Smooth dimming with ELV & Triac dimmers
- Optional 0-10V dimming
- 220-240V, 277V AC input with optional voltage converter
- LM-80 compliant LEDs
- High Color Rendering Index (CRI) 90+

- Tight binning 3 Step Mac Adam Ellipses
- Low heat generation, easy thermal management
- L70 > 60,000 Hours

### APPLICATIONS

- New or retrofit OEM fixtures
- Indoor or outdoor applications
- Architectural and commercial
- Flush mount and recessed fixtures

### AVAILABLE CONFIGURATIONS

Model Number	Suffix	CRI	CCT
QLUXDOBAR22820W120LED	- 822	80+	2200K
QLUXDOBAR22820W120LED	- 825		2500K
QLUXDOBAR22820W120LED	- 827		2700K
QLUXDOBAR22820W120LED	- 830		3000K
QLUXDOBAR22820W120LED	- 832		3200K
QLUXDOBAR22820W120LED	- 835		3500K
QLUXDOBAR22820W120LED	- 840		4000K
QLUXDOBAR22820W120LED	- 850		5000K

Model Number	Suffix	CRI	CCT
QLUXDOBAR22820W120LED	- 922	90+	2200K
QLUXDOBAR22820W120LED	- 925		2500K
QLUXDOBAR22820W120LED	- 927		2700K
QLUXDOBAR22820W120LED	- 930		3000K
QLUXDOBAR22820W120LED	- 932		3200K
QLUXDOBAR22820W120LED	- 935		3500K
QLUXDOBAR22820W120LED	- 940		4000K
QLUXDOBAR22820W120LED	- 950		5000K

Custom CCT available

[1] Luminous flux and efficacy are typical value, measured by an integrated sphere at 25°C, tolerance: ± 10%;

[2] Ra/CRI is measured with tolerance: ± 2;

[3] Tolerance of power: ± 1W.



**L.T.F.**

## DOB AC Line Voltage LED Boards

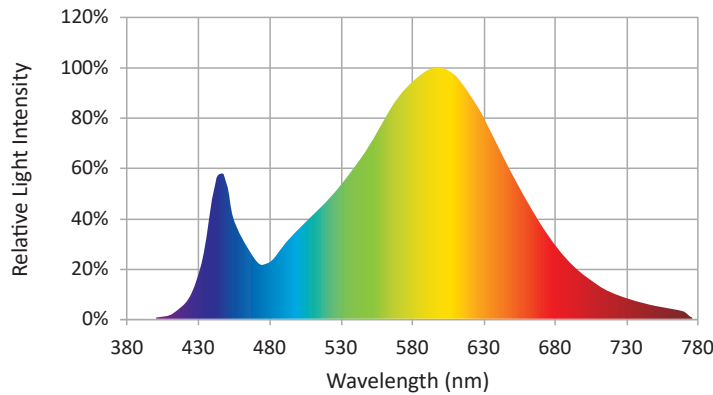


### Dimmable 20W Round 228mm (OD) QLUXDOBAR22820W120LED DOB Series

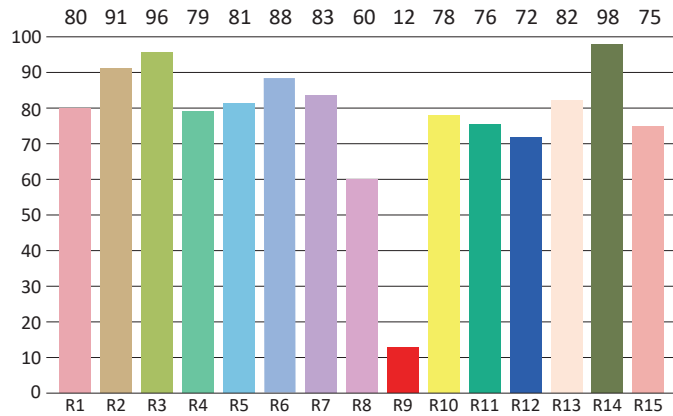
CIE Colorimetric Parameters*	
Chromaticity Coordinates	x=0.4328 y=0.3958
CCT	3003K
Peak Wavelength	602.6nm
Dominant Wavelength	583.9nm
Rendering Index	82.1
Color Ratio	R=22.8%, G=75%, B=1.7%
Half Bandwidth	130.2nm
Color Purity	48.7%

\* Test result shown based on 3000K CCT, 80 CRI model

## SPECTRORADIOMETRIC CHARACTERISTICS



## CRI TEST RESULTS



R1=80	R2=91	R3=96	R4=79	R5=81	R6=88	R7=83	R8=60
R9=12	R10=78	R11=76	R12=72	R13=82	R14=98	R15=75	

\* Test result shown based on 3000K CCT, 80 CRI model



**L.T.F.**

## DOB AC Line Voltage LED Boards



### Dimmable 20W Round 228mm (OD) QLUXDOBAR22820W120LED DOB Series

Photometric Parameters*	
<b>Luminous Flux:</b>	1835.5lm
<b>Radiant Power:</b>	15418mW
<b>Efficacy:</b>	83.8lm/W

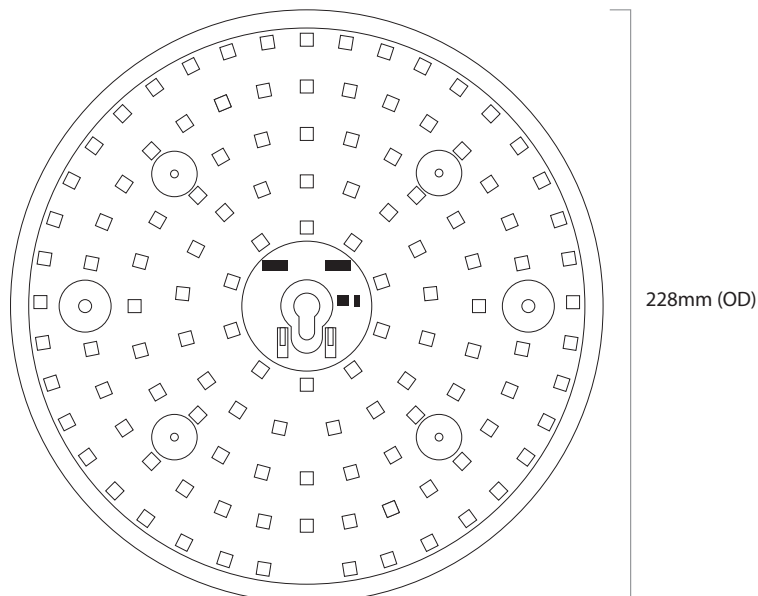
\* Test result shown based on 3000K CCT, 80 CRI model

Electric Parameters	
<b>Voltage</b>	U=120.7V
<b>Current</b>	I=0.183A
<b>Power</b>	P=21.9W
<b>Power Factor</b>	PF=0.995

### ABSOLUTE MAXIMUM RATINGS (Ta=25°C)

Parameter	Symbol	Value	Unit
Voltage	V in	132	Vac
Operating Temperature	---	-35~+50	°C
LED Solder Temperature	Ts	110	°C
Storage Temperature	Tstg	-40~+100	°C
ESD Sensitivity (HBM)	---	±4000	V
Surge	---	2500	Vac

### MECHANICAL SPECIFICATIONS



228mm (OD)