

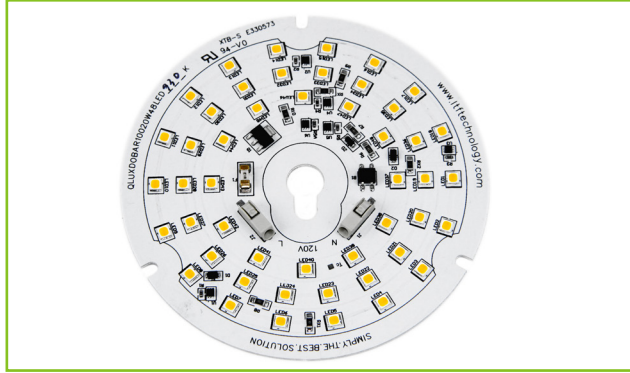


L.T.F.

DOB AC Line Voltage LED Boards



QLUX DOB



Dimmable 20W Round 100mm (OD) QLUXDOBAC10020W48LED DOB Series

Wattage	20W
Input	120V AC 50/60 Hz
CRI	80, 90+
CCT Options	2400K - 5000K
Custom CCT	Available
Size	100mm (OD)
Dimming	ELV, Triac
Optional Dimming	0-10V
Beam Angle	160°



RoHS



FEATURES

- AC line voltage driver on board module; No external drivers or transformers required
- High efficacy lumen output: > 110 lm/W
- Smooth dimming with ELV & Triac dimmers
- Dimming range <1% - 100%
- Optional 0-10V dimming
- 220-240V, 277V AC input with optional voltage converter
- LM-80 compliant LEDs
- High Color Renedering Index (CRI) 90+

- Tight binning 3 Step Mac Adam Ellipses
- Low heat generation, easy thermal management
- L70 > 60,000 Hours

APPLICATIONS

- New or retrofit OEM fixtures
- Indoor or outdoor applications
- Architectural and commercial
- Flush mount and recessed fixtures

AVAILABLE CONFIGURATIONS

Model Number	Suffix	CRI	CCT
QLUXDOBAC10020W48LED	- 822	80+	2200K
QLUXDOBAC10020W48LED	- 825		2500K
QLUXDOBAC10020W48LED	- 827		2700K
QLUXDOBAC10020W48LED	- 830		3000K
QLUXDOBAC10020W48LED	- 832		3200K
QLUXDOBAC10020W48LED	- 835		3500K
QLUXDOBAC10020W48LED	- 840		4000K
QLUXDOBAC10020W48LED	- 850		5000K

Model Number	Suffix	CRI	CCT
QLUXDOBAC10020W48LED	- 922	90+	2200K
QLUXDOBAC10020W48LED	- 925		2500K
QLUXDOBAC10020W48LED	- 927		2700K
QLUXDOBAC10020W48LED	- 930		3000K
QLUXDOBAC10020W48LED	- 932		3200K
QLUXDOBAC10020W48LED	- 935		3500K
QLUXDOBAC10020W48LED	- 940		4000K
QLUXDOBAC10020W48LED	- 950		5000K

Custom CCT available

[1] Luminous flux and efficacy are typical value, measured by an integrated sphere at 25°C, tolerance: ± 10%;

[2] Ra/CRI is measured with tolerance: ± 2;

[3] Tolerance of power: ± 1W.



L.T.F.

DOB AC Line Voltage LED Boards

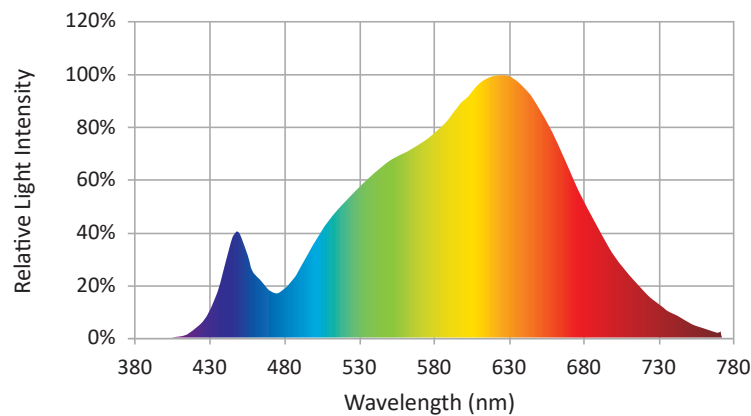


Dimmable 20W Round 100mm (OD) QLUXDOBAR10020W48LED DOB Series

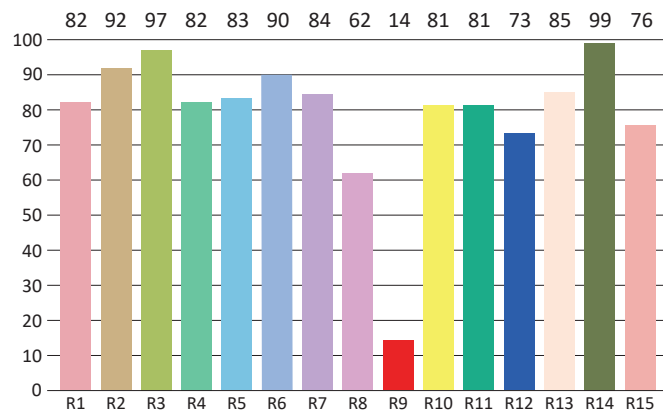
CIE Colorimetric Parameters*	
Chromaticity Coordinates	x=0.4302 y=0.4017
CCT	3096K
Peak Wavelength	603.7nm
Dominant Wavelength	582.4nm
Rendering Index	84
Color Ratio	R=22.5%, G=75.7%, B=1.8%
Half Bandwidth	131.7nm
Color Purity	49.7%

* Test result shown based on 3000K CCT, 80 CRI model

SPECTRORADIOMETRIC CHARACTERISTICS



CRI TEST RESULTS



R1=82	R2=92	R3=97	R4=82	R5=83	R6=90	R7=84	R8=62
R9=14	R10=81	R11=81	R12=73	R13=85	R14=99	R15=76	

* Test result shown based on 3000K CCT, 80 CRI model



L.T.F.

DOB AC Line Voltage LED Boards



Dimmable 20W Round 100mm (OD) QLUXDOBAR10020W48LED DOB Series

Photometric Parameters*	
Luminous Flux:	2271.96lm
Radiant Power:	6864.2mW
Efficacy:	113lm/W

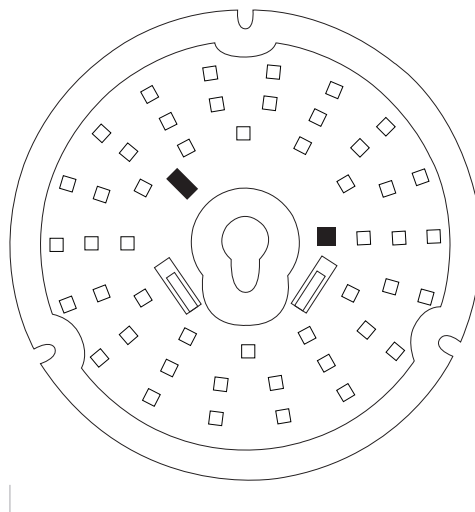
* Test result shown based on 3000K CCT, 80 CRI model

Electric Parameters	
Voltage	U=120.4V
Current	I=0.171A
Power	P=20.1W
Power Factor	PF=0.979

ABSOLUTE MAXIMUM RATINGS (Ta=25°C)

Parameter	Symbol	Value	Unit
Voltage	V in	132	Vac
Operating Temperature	---	-35~+50	°C
LED Solder Temperature	Ts	110	°C
Storage Temperature	Tstg	-40~+100	°C
ESD Sensitivity (HBM)	---	±4000	V
Surge	---	2500	Vac

MECHANICAL SPECIFICATIONS



100mm (OD)