



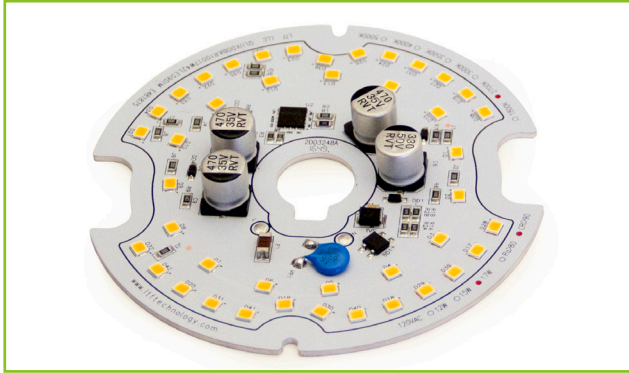
L.T.F.

DOB AC Line Voltage LED Boards



Dim-to-Warm 17W Round 100mm (OD) QLUXDOBAR10017W42LEDWDM DOB Series

QLUX DOB



| | |
|-------------------------|---------------------|
| Wattage | 17W |
| Input | 120V AC 50/60 Hz |
| CRI | 90+ |
| CCT | 3000K dims to 1800K |
| Custom CCT | Available |
| Size | 100mm (OD) |
| Dimming | ELV, Triac |
| Optional Dimming | 0-10V |
| Beam Angle | 160° |



RoHS



FEATURES

- Exceeds California Title 24 requirements
- AC line voltage driver on board module; No external drivers or transformers required
- Dim-to-Warm feature; 3000K changes to a warm cozy 1800K when dimmed
- High efficacy lumen output: > 74 lm/W
- Smooth dimming with ELV & Triac dimmers
- Optional 0-10V dimming
- 220-240V, 277V AC input with optional voltage converter
- LM-80 compliant LEDs

- High Color Renedering Index (CRI) 90+
- Tight binning 3 Step Mac Adam Ellipses
- Low heat generation, easy thermal management
- L70 > 60,000 Hours



APPLICATIONS

- New or retrofit OEM fixtures
- Indoor or outdoor applications
- Architectural and commercial
- Flush mount and recessed fixtures



AVAILABLE CONFIGURATIONS

| Model | CRI | CCT | | Lumens |
|-----------------------------|-----|--------------|----------------|--------|
| | | CCT (no dim) | CCT (100% dim) | |
| QLUXDOBAR1004217WLED930KWDM | 90+ | 3000K | 1800K | 1250lm |
| | | | | |

Custom CCT available

[1] Luminous flux and efficacy are typical value, measured by an integrated sphere at 25°C, tolerance: ± 10%;

[2] Ra/CRI is measured with tolerance: ± 2;

[3] Tolerance of power: ± 1W.

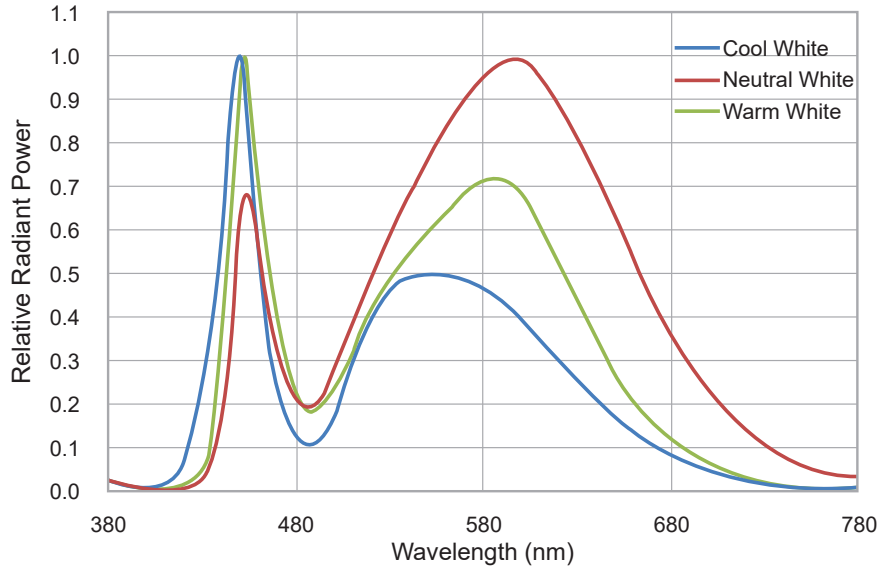


L.T.F.

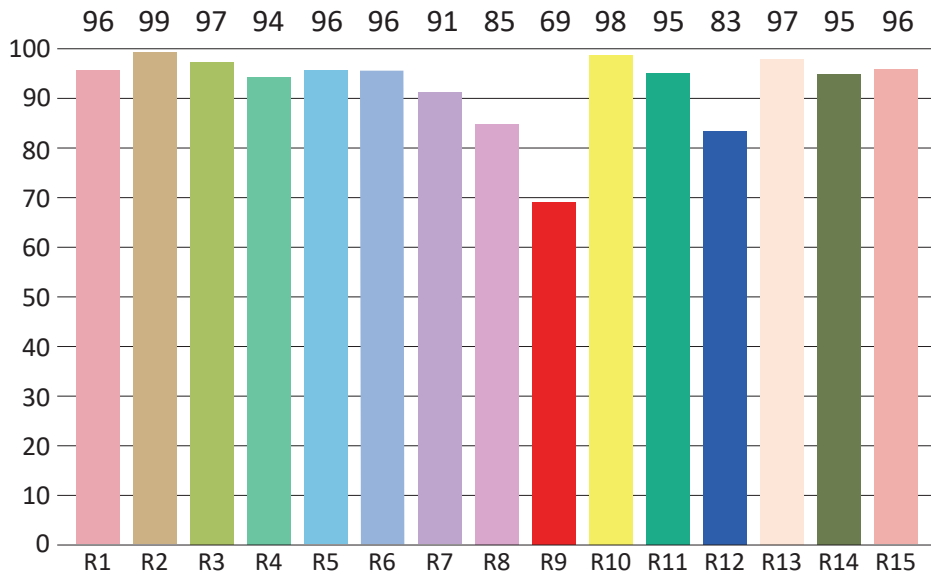
DOB AC Line Voltage LED Boards

**Dim-to-Warm 17W Round 100mm (OD)
QLUXDOBAR10017W42LEDWDM DOB Series**

SPECTRORADIOMETRIC CHARACTERISTICS



CRI TEST RESULTS



| | | | | | | | |
|---------|----------|----------|----------|----------|----------|----------|---------|
| R1 = 96 | R2 = 99 | R3 = 97 | R4 = 94 | R5 = 96 | R6 = 96 | R7 = 91 | R8 = 85 |
| R9 = 69 | R10 = 98 | R11 = 95 | R12 = 83 | R13 = 97 | R14 = 95 | R15 = 96 | |

* Test result shown based on 3000K CCT (no dim)

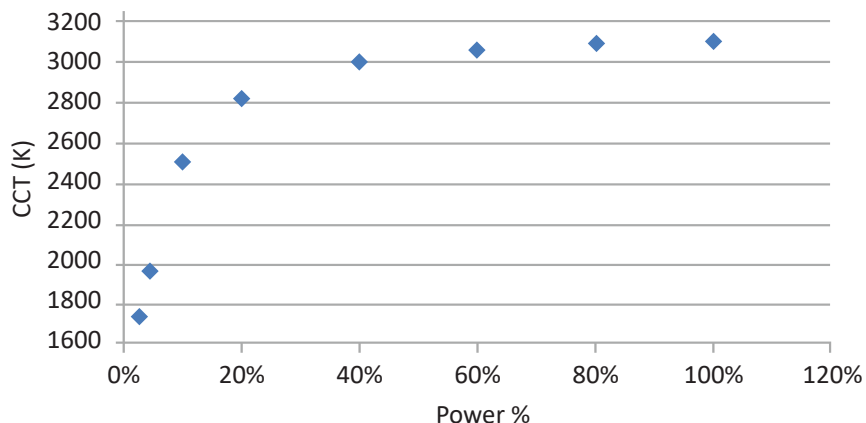


L.T.F.

DOB AC Line Voltage LED Boards

**Dim-to-Warm 17W Round 100mm (OD)
QLUXDOBAR10017W42LEDWDM DOB Series**

CCT (K) VS. DIMMING PERCENT



ABSOLUTE MAXIMUM RATINGS (Ta=25°C)

| Parameter | Symbol | Value | Unit |
|------------------------|--------|----------|------|
| Voltage | V in | 132 | Vac |
| Operating Temperature | --- | -35~+50 | °C |
| LED Solder Temperature | Ts | 110 | °C |
| Storage Temperature | Tstg | -40~+100 | °C |
| ESD Sensitivity (HBM) | --- | ±4000 | V |
| Surge | --- | 2500 | Vac |

MECHANICAL SPECIFICATIONS

