

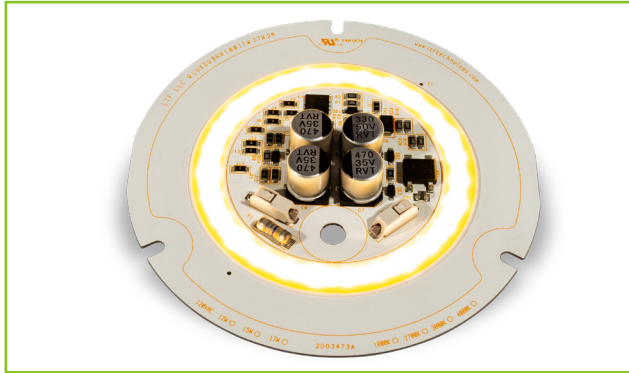


L.T.F.

DOB AC Line Voltage LED Boards

Dim-to-Warm Ceiling Fan Module 17W Round 100mm (OD) QLUXDOBAR10017W27LED-WDM DOB Series

QLUX DOB



| | |
|-------------------------|---------------------|
| Wattage | 17W |
| Input | 120V AC 50/60 Hz |
| CRI | 90+ |
| CCT | 3000K dims to 1800K |
| Custom CCT | Available |
| Size | 100mm (OD) |
| Dimming | ELV, Triac |
| Optional Dimming | 0-10V |
| Beam Angle | 120° |



RoHS



FEATURES

- Exceeds California Title 24 requirements
- AC line voltage driver on board module; No external drivers or transformers required
- Dim-to-Warm feature; 3000K changes to a warm cozy 1800K when dimmed
- High efficacy lumen output: > 77 lm/W
- Smooth dimming with ELV & Triac dimmers
- Optional 0-10V dimming
- 220-240V, 277V AC input with optional voltage converter
- LM-80 compliant LEDs

- High Color Renedering Index (CRI) 90+
- Tight binning 3 Step Mac Adam Ellipses
- Low heat generation, easy thermal management
- L70 > 60,000 Hours

APPLICATIONS

- New or retrofit OEM fixtures
- Indoor or outdoor applications
- Architectural and commercial
- Flush mount and recessed fixtures



AVAILABLE CONFIGURATIONS

| Model | CRI | CCT | | Lumens |
|-----------------------------|-----|--------------|----------------|--------|
| | | CCT (no dim) | CCT (100% dim) | |
| QLUXDOBAR10017W27LED930KWDM | 90+ | 3000K | 1800K | 1307lm |

Custom CCT available

[1] Luminous flux and efficacy are typical value, measured by an integrated sphere at 25°C, tolerance: ± 10%;

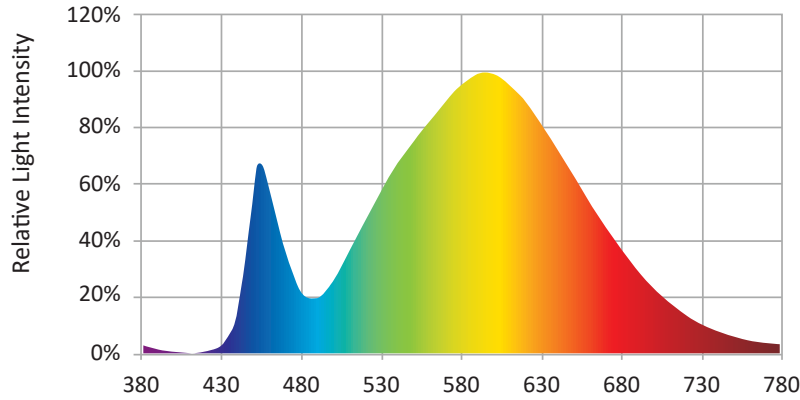
[2] Ra/CRI is measured with tolerance: ± 2;

[3] Tolerance of power: ± 1W.

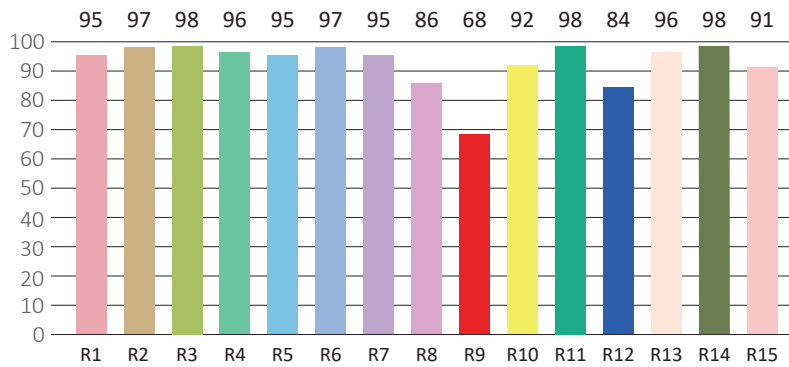


**Dim-to-Warm Ceiling Fan Module 17W Round 100mm (OD)
QLUXDOBAR10017W27LED-WDM DOB Series**

SPECTRORADIOMETRIC CHARACTERISTICS

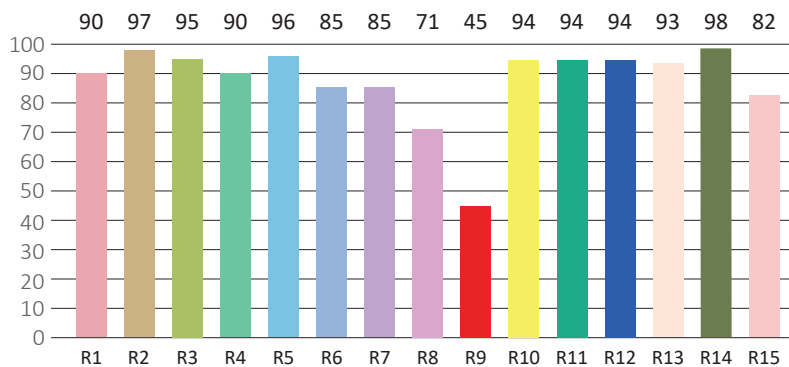


* Test result shown based on 3000K CCT (no dim)



| | | | | | | | |
|-------|--------|--------|--------|--------|--------|--------|-------|
| R1=95 | R2=97 | R3=98 | R4=96 | R5=95 | R6=97 | R7=95 | R8=86 |
| R9=68 | R10=92 | R11=98 | R12=84 | R13=96 | R14=98 | R15=91 | |

* Test result shown based on 3000K CCT (no dim)

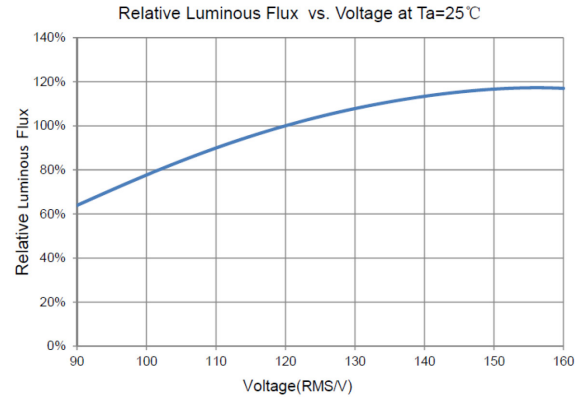
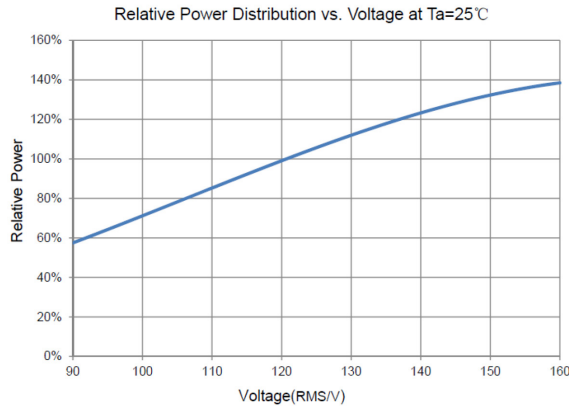


| | | | | | | | |
|-------|--------|--------|--------|--------|--------|--------|-------|
| R1=90 | R2=97 | R3=95 | R4=90 | R5=96 | R6=85 | R7=85 | R8=71 |
| R9=45 | R10=94 | R11=94 | R12=94 | R13=93 | R14=98 | R15=82 | |

* Test result shown based on 1800 CCT (100% dim)



**Dim-to-Warm Ceiling Fan Module 17W Round 100mm (OD)
QLUXDOBAR10017W27LED-WDM DOB Series**



ABSOLUTE MAXIMUM RATINGS (Ta=25°C)

| Parameter | Symbol | Value | Unit |
|------------------------|--------|----------|------|
| Voltage | V in | 132 | Vac |
| Operating Temperature | --- | -35~+50 | °C |
| LED Solder Temperature | Ts | 110 | °C |
| Storage Temperature | Tstg | -40~+100 | °C |
| ESD Sensitivity (HBM) | --- | ±4000 | V |
| Surge | --- | 2500 | Vac |

MECHANICAL SPECIFICATIONS

