



**L.T.F.**

## DOB AC Line Voltage LED Boards



# QLUX DOB



### Dimmable 8W Linear 184x56mm QLUXDOBAL1848W28LED DOB Series

<b>Wattage</b>	8W
<b>Input</b>	120V AC 50/60 Hz
<b>CRI</b>	92+
<b>CCT Options</b>	2200K - 5000K
<b>Custom CCT</b>	Available
<b>Size</b>	184x56mm
<b>Dimming</b>	ELV, Triac
<b>Optional Dimming</b>	0-10V
<b>Beam Angle</b>	160°



**RoHS**



## FEATURES

- Exceeds California Title 24 requirements
- AC line voltage driver on board module; No external drivers or transformers required
- High efficacy lumen output: > 100 lm/W
- Smooth dimming with ELV & Triac dimmers
- Optional 0-10V dimming
- 220-240V, 277V AC input with optional voltage converter
- LM-80 compliant LEDs
- High Color Rendering Index (CRI) 92+

- Tight binning 3 Step Mac Adam Ellipses
- Low heat generation, easy thermal management
- L70 > 60,000 Hours

## APPLICATIONS

- New or retrofit OEM fixtures
- Indoor or outdoor applications
- Architectural and commercial
- Flush mount and recessed fixtures



## AVAILABLE CONFIGURATIONS

Model Number	Suffix	CRI	CCT	Lumens
QLUXDOBAL1848W28LED	- 922	90+	2200K	795lm
QLUXDOBAL1848W28LED	- 925		2500K	800lm
QLUXDOBAL1848W28LED	- 930		3000K	812lm
QLUXDOBAL1848W28LED	- 935		3500K	820lm
QLUXDOBAL1848W28LED	- 940		4000K	830lm
QLUXDOBAL1848W28LED	- 950		5000K	845lm

Custom CCT available

[1] Luminous flux and efficacy are typical value, measured by an integrated sphere at 25°C, tolerance: ± 10%;

[2] Ra/CRI is measured with tolerance: ± 2;

[3] Tolerance of power: ± 1W.



**L.T.F.**

## DOB AC Line Voltage LED Boards

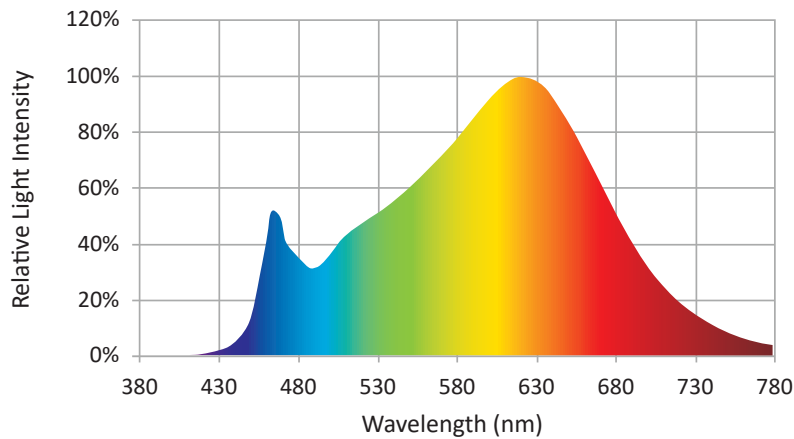


### Dimmable 8W Linear 184x56mm QLUXDOBAL1848W28LED DOB Series

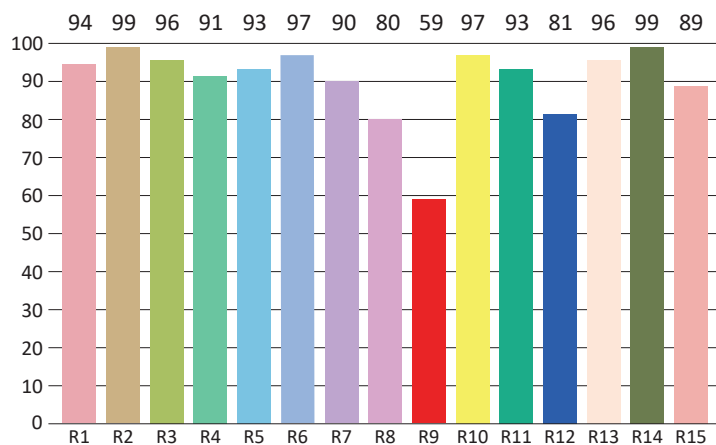
CIE Colorimetric Parameters*	
Chromaticity Coordinates	x=0.4358 y=0.4037
CCT	3000K
Peak Wavelength	615nm
Dominant Wavelength	581nm(E)
Rendering Index	92.5
Color Ratio	R=44.1% , G=47.2%, B=8.7%
Half Bandwidth	153.2nm
Color Purity	0.5225

\* Test result shown based on 3000K CCT

### SPECTRORADIOMETRIC CHARACTERISTICS



### CRI TEST RESULTS



R1=94	R2=99	R3=96	R4=91	R5=93	R6=97	R7=90	R8=80
R9=59	R10=97	R11=93	R12=81	R13=96	R14=99	R15=89	

\* Test result shown based on 3000K CCT



**L.T.F.**

## DOB AC Line Voltage LED Boards

### Dimmable 8W Linear 184x56mm QLUXDOBAL1848W28LED DOB Series

Photometric Parameters*	
<b>Luminous Flux:</b>	812.7lm
<b>Radiant Flux:</b>	2.672W
<b>Efficacy:</b>	101lm/W

\* Test result shown based on 3000K CCT

Electric Parameters	
<b>Voltage</b>	U=120.2V
<b>Current</b>	I=0.067A
<b>Power</b>	P=8.03W
<b>Power Factor</b>	PF=1.00

### ABSOLUTE MAXIMUM RATINGS (Ta=25°C)

Parameter	Symbol	Value	Unit
Voltage	V in	132	Vac
Operating Temperature	---	-35~+50	°C
LED Solder Temperature	Ts	110	°C
Storage Temperature	Tstg	-40~+100	°C
ESD Sensitivity (HBM)	---	±4000	V
Surge	---	2500	Vac

### MECHANICAL SPECIFICATIONS

