



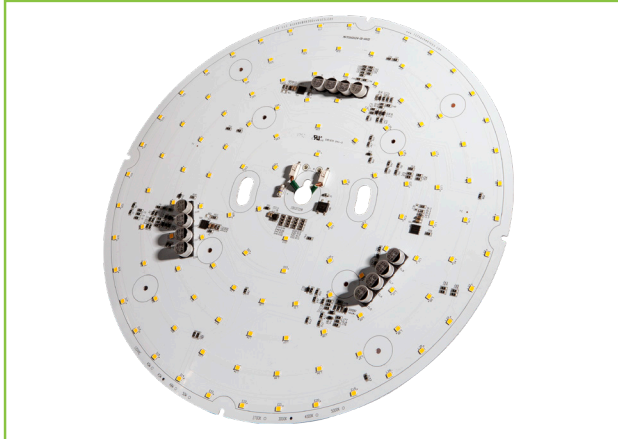
L.T.F.

DOB AC Line Voltage LED Boards



Dimmable 50W Round 300mm (OD) QLUXDOBAR30050W123LED DOB Series

QLUX DOB



Wattage	50W
Power Factor	0.992
CRI	94.2
CCT Options	2700K - 4000K
Luminous Flux	≈ 3143 lm
Efficacy	≈ 62 lm/W
Number of LEDs	123
Beam Angle	160°
Dimensions	300mm OD
Dimming	ELV & Triac Optional 0-10V

NOTE: Measurements based on 2700K CCT model.



RoHS



FEATURES

- Driver On Board technology - No external LED driver required.
- CCT options 2700K - 4000K.
- Superior color rendering ≈ 94 CRI .
- High efficacy lumen output up to ≈ 61.8 lm/W.
- LM-80 compliant LEDs.
- Tight binning 3 step Mac Adam Ellipses.
- Uniform & crisp light source intensity.
- Hot spot free design.
- California Title 24 Compliant.
- Extra thin low profile.
- Low heat generation, easy thermal management.
- Easy to fit in new design or retrofit applications.
- 277V AC option available.
- L70 > 60,000 Hours

APPLICATIONS

- Residential and Commercial
- New or Retrofit OEM Fixtures

ELECTRICAL SPECIFICATIONS

Model #	Input	Wattage	CCT Options	Luminous Flux
QLUXDOBAR30050W123LED927	120V AC 0.42A 50/60Hz	50W	2700K	3143 lm
QLUXDOBAR30050W123LED930			3000K	≈ 3300 lm
QLUXDOBAR30050W123LED935			3500K	≈ 3600 lm
QLUXDOBAR30050W123LED940			4000K	≈ 3800 lm

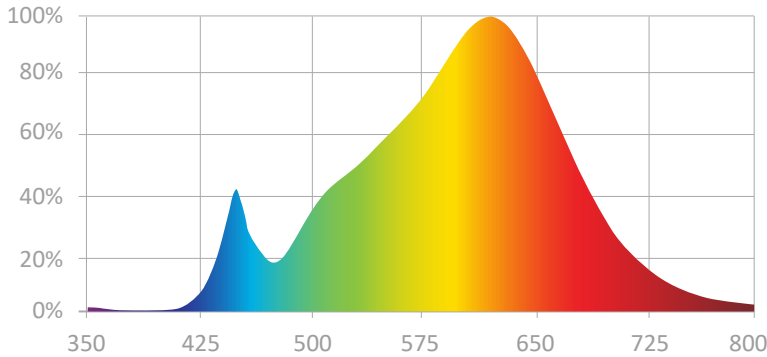


L.T.F.

DOB AC Line Voltage LED Boards

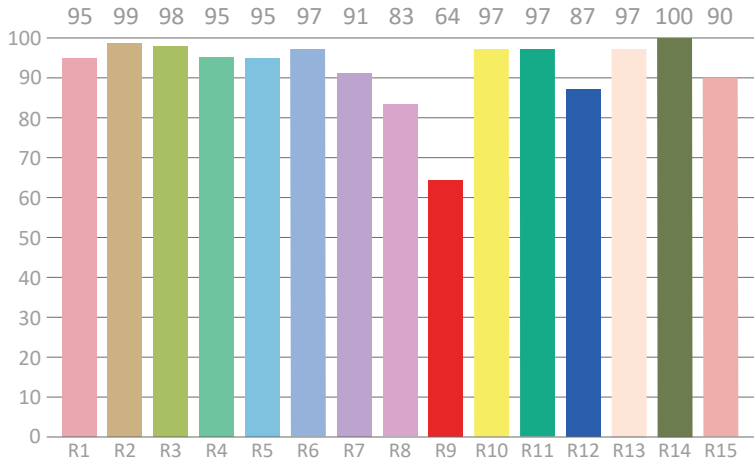
**Dimmable 50W Round 300mm (OD)
QLUXDOBAR30050W123LED DOB Series**

SPECTRORADIOMETRIC CHARACTERISTICS - 2700K



Luminous Flux: 3143.36 lm
Radiant Flux: 11.301 W
Efficacy: 61.8 lm/W
Nominal CCT: LED_2700K
 $x_0=0.4578$ $y_0=0.4101$
Chromaticity Coordinates:
 $x=0.4534$ $y=0.4092$ $u'=0.259$ $v'=0.5258$
Chromaticity Difference: +0.00005 Duv
CCT: 2782 K

CRI TEST RESULTS - 2700K



Color Rendering Index (CRI): 94.2
Dominant Wavelength: 582.0 nm(E)
Peak Wavelength: 620nm
Colour Fidelity Index: Rf=91
Gamut Index: Rg=97
Color Purity: 0.5930
Color Ratio: Kr=46.0% Kg=46.0% Kb=8.0%
Bandwidth: 148.5nm
Photosynthetically Active Radiation (PAR): 10.61W
Photosynthetic Photon Flux (PPF): 52.64 $\mu\text{mol/s}$

R1=95	R2=99	R3=98	R4=95	R5=95	R6=97	R7=91	R8=83
R9=64	R10=97	R11=97	R12=87	R13=97	R14=100	R15=90	Re=92

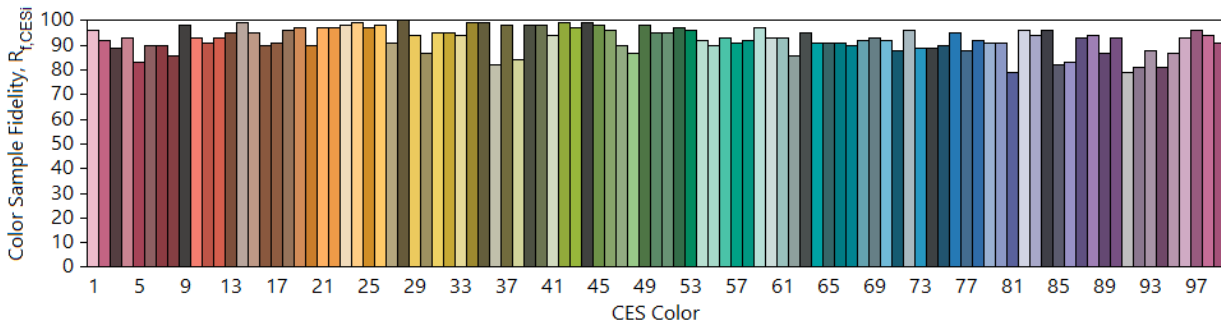
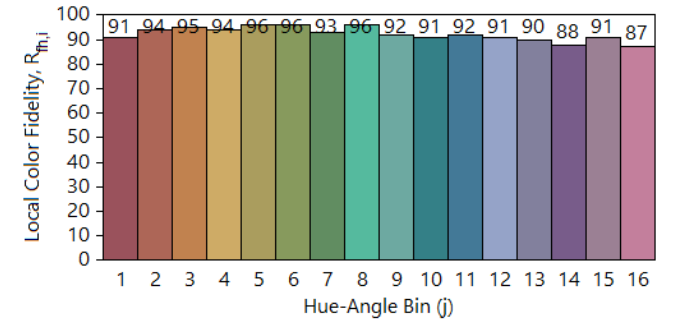
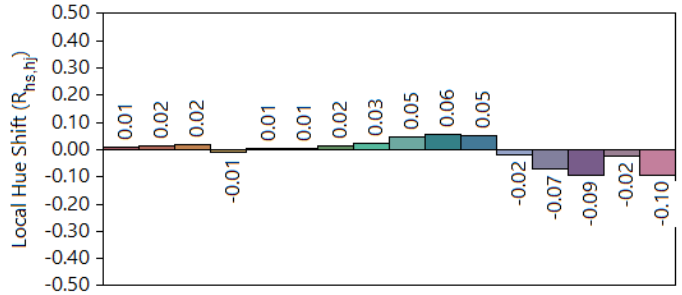
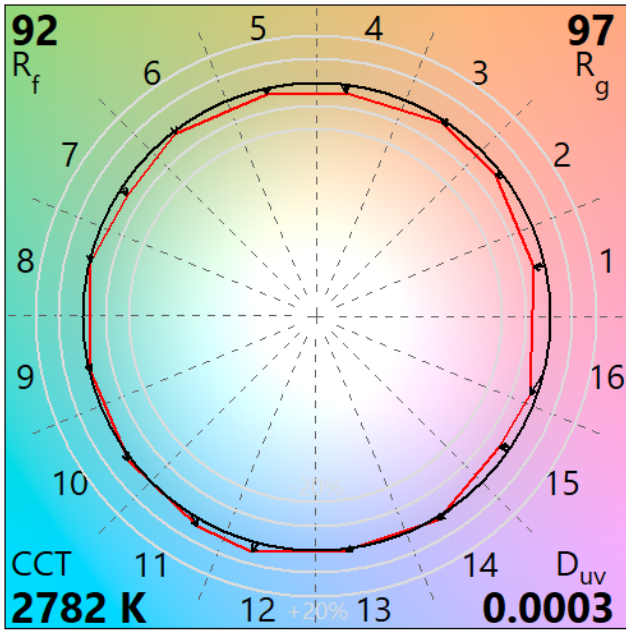
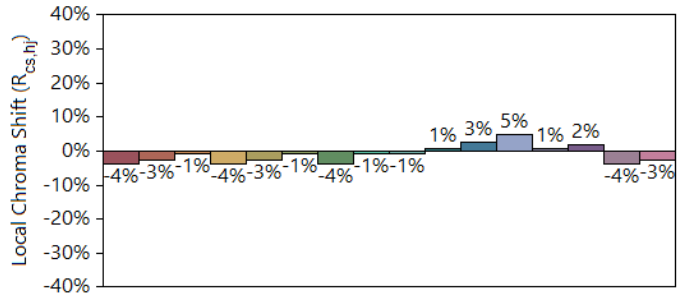
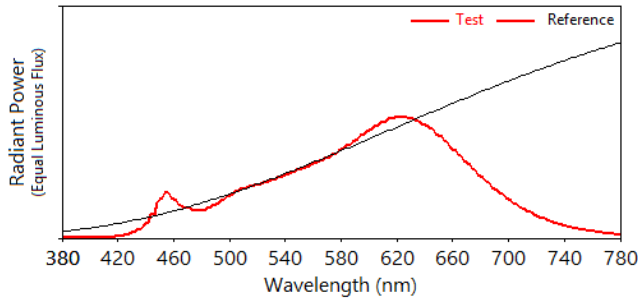


L.T.F.

DOB AC Line Voltage LED Boards

**Dimmable 50W Round 300mm (OD)
QLUXDOBAR30050W123LED DOB Series**

IES TM-30-18 Test Results - 2700K

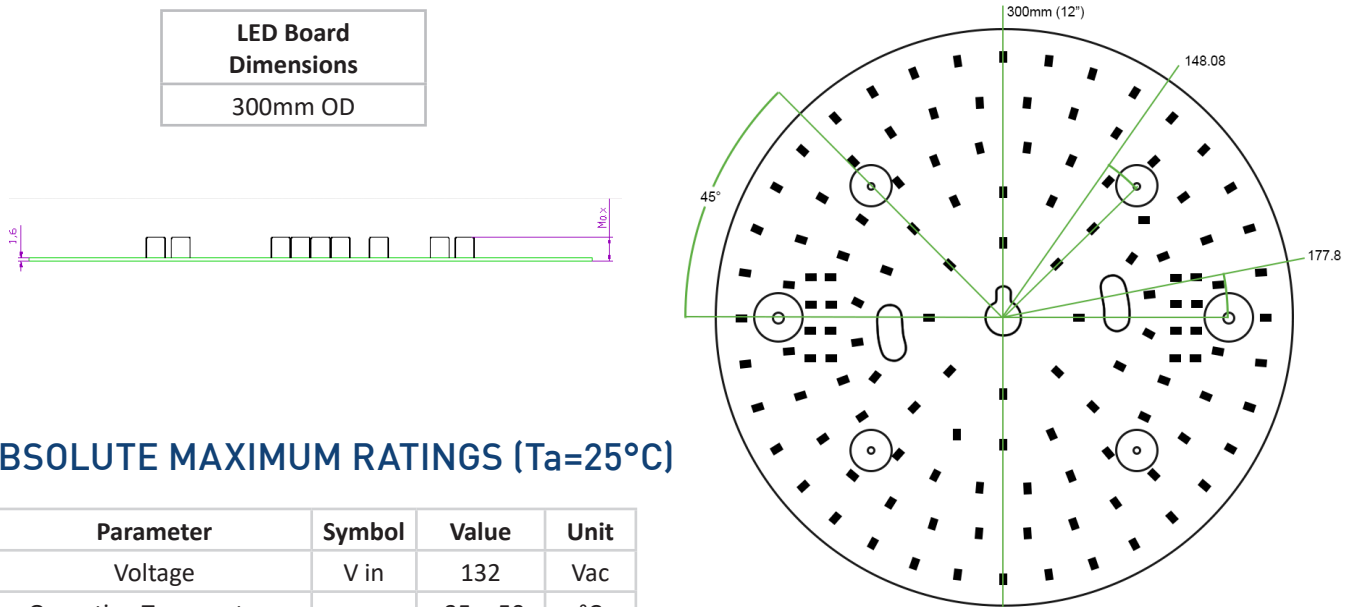




PERCENT FLICKER WHEN TRIAC DIMMING AT 120V AC, 60Hz

Dimmer		Percent Flicker		Flicker Index	
Brand	Model	@ 100% dim	@ 20% dim	@ 100% dim	@ 20% dim
Lutron	CT-600P	18.6%	20.9%	0.048	0.053
	CTCL-153P	17.9%	21.4%	0.049	0.054
	DVCL-153P	18.2%	22.5%	0.051	0.055
	MACL-153M	19.2%	23.6%	0.053	0.060
	S-600P	18.6%	26.0%	0.052	0.060
	S-603P	18.4%	21.2%	0.047	0.052
	SCL-153P	17.6%	21.1%	0.049	0.054
	TGCL-153P	19.3%	23.5%	0.050	0.057
Leviton	6631	18.4%	24.4%	0.048	0.057
	6674	17.2%	24.4%	0.046	0.053
	IPL06	18.5%	24.9%	0.050	0.056

MECHANICAL SPECIFICATIONS



ABSOLUTE MAXIMUM RATINGS (Ta=25°C)

Parameter	Symbol	Value	Unit
Voltage	V in	132	Vac
Operating Temperature	---	-35~+50	°C
LED Solder Temperature	Ts	110	°C
Storage Temperature	Tstg	-40~+100	°C
ESD Sensitivity (HBM)	---	±4000	V
Surge	---	2500	Vac