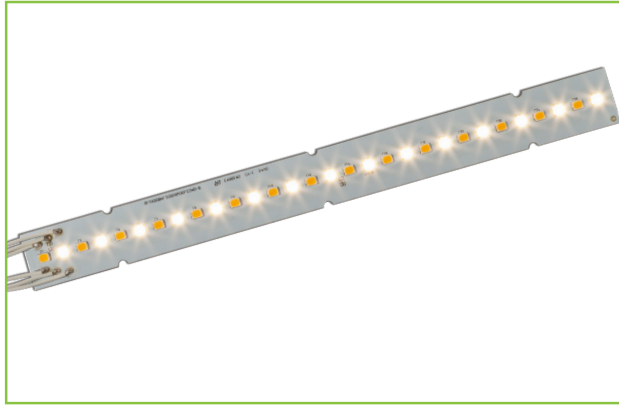




L.T.F.

QLUX DOB AC Line Voltage LED Series

**QLUXDOBAL2008W30LED92740 8W 200mm Linear
Selectable CCT Under Cabinet LED Board**



Wattage	8W
Power Factor	0.908
CRI	93+
Switchable CCT	2700K or 4000K
Lumens	980 lm
Efficacy	118 lm/W
Number of LEDs	30
Beam Angle	160°
Dimensions	200mm x 57mm
Dimming	Step Dimming & ELV / Triac



RoHS



FEATURES

- Driver On Board technology - No external LED driver required.
- Selectable CCT 2700K or 4000K.
- Integrated step dimming.
- Superior color rendering CRI 93+.
- High efficacy lumen output up to 118 lm/W.
- LM-80 compliant LEDs.
- Tight Binning 3 Step Mac Adam Ellipses.
- Uniform & crisp light source intensity.
- Hot spot free design.

- California Title 24 Compliant.
- Extra thin low profile.
- Low heat generation, easy thermal management.
- Easy to fit in new design or retrofit applications.
- L70 > 60,000 Hours

APPLICATIONS

- Under Cabinet Light
- Residential and Commercial
- New or Retrofit OEM Fixtures

ELECTRICAL SPECIFICATIONS

Model #	Input	Wattage	Switchable CCT	Luminous Flux
QLUXDOBAL2008W30LED92740	120V AC, 0.06A 50/60Hz	8W	2700K or 4000K	980 lm

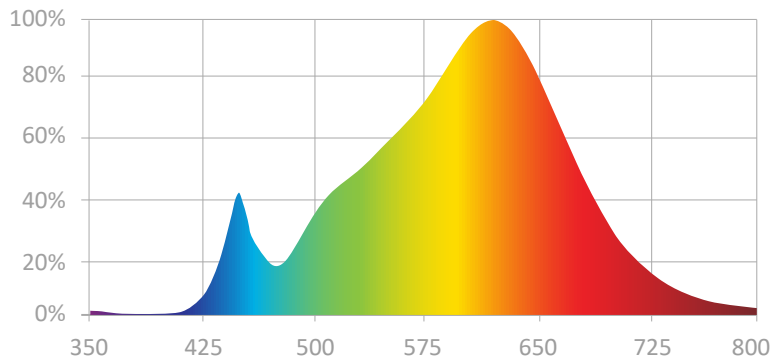


L.T.F.

QLUX DOB AC Line Voltage LED Series

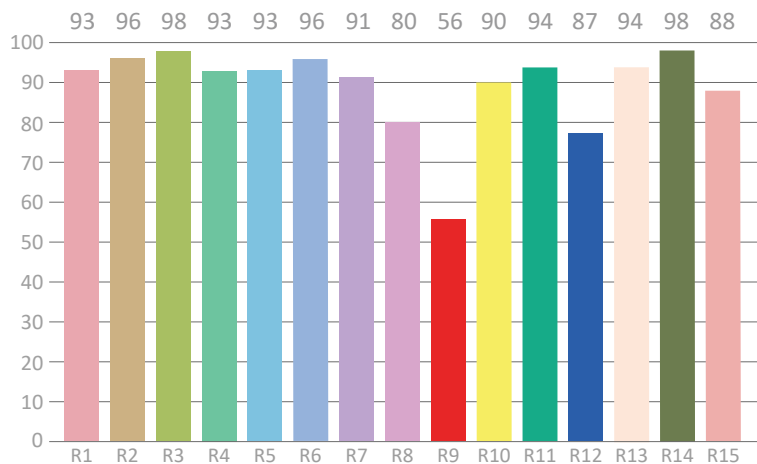
**QLUXDOBAL2008W30LED92740 8W 200mm Linear
Selectable CCT Under Cabinet LED Board**

SPECTRORADIOMETRIC CHARACTERISTICS - 2700K



Luminous Flux: 923.44 lm
Radiant Flux: 3.597 W
Efficacy: 111.1 lm/W
Nominal CCT: LED_3000K
 $x_0=0.4338$ $y_0=0.4030$
Chromaticity Coordinates:
 $x=0.4513$ $y=0.4054$ $u'=0.2593$ $v'=0.5241$
Chromaticity Difference: -0.00116 Duv
CCT: 2783 K

CRI TEST RESULTS - 2700K



Color Rendering Index (CRI): 92.3
Dominant Wavelength: 583.0 nm(E)
Peak Wavelength: 620nm
Colour Fidelity Index: Rf=90
Gamut Index: Rg=100
Color Purity: 0.5726
Color Ratio: Kr=46.0% Kg=46.6% Kb=7.4%
Bandwidth: 142.6nm

R1=93	R2=96	R3=98	R4=93	R5=93	R6=96	R7=91	R8=80
R9=56	R10=90	R11=94	R12=87	R13=94	R14=98	R15=88	Re=90

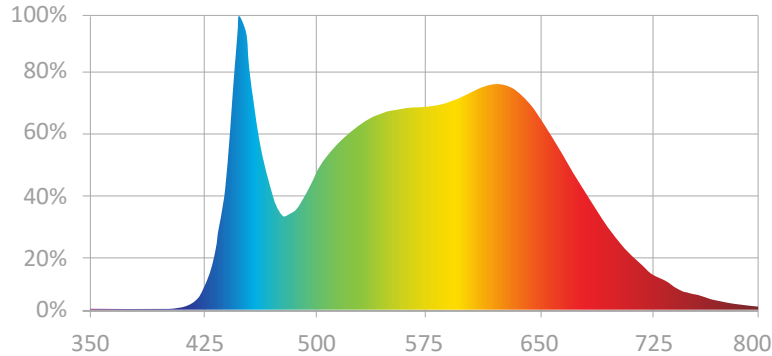


L.T.F.

QLUX DOB AC Line Voltage LED Series

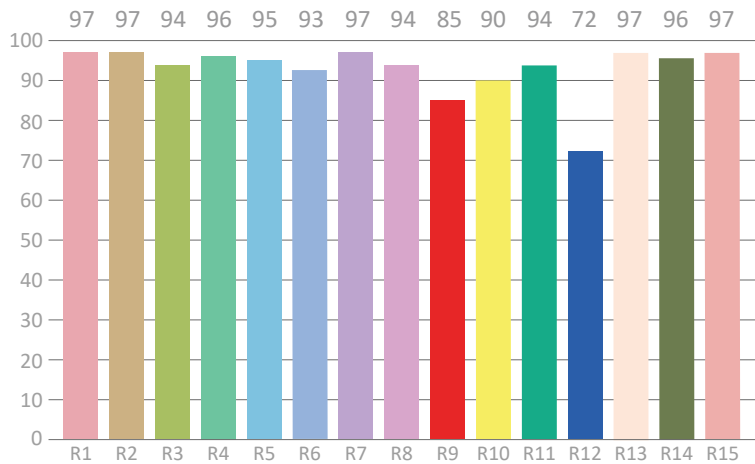
**QLUXDOBAL2008W30LED92740 8W 200mm Linear
Selectable CCT Under Cabinet LED Board**

SPECTRORADIOMETRIC CHARACTERISTICS - 4000K



Luminous Flux: 979.89 lm
Radiant Flux: 3.822 W
Efficacy: 117.8 lm/W
Nominal CCT: LED_3000K
 $x_0=0.4338$ $y_0=0.4030$
Chromaticity Coordinates:
 $x=0.3720$ $y=0.3639$ $u'=0.2246$ $v'=0.4945$
Chromaticity Difference: -0.00356 Duv
CCT: 4150 K

CRI TEST RESULTS - 4000K



Color Rendering Index (CRI): 95.2
Dominant Wavelength: 579.0 nm(E)
Peak Wavelength: 450nm
Colour Fidelity Index: Rf=89
Gamut Index: Rg=100
Color Purity: 0.2092
Color Ratio: Kr=37.0% Kg=52.3% Kb=10.7%
Bandwidth: 26.1nm

R1=97	R2=97	R3=94	R4=96	R5=95	R6=93	R7=97	R8=94
R9=85	R10=90	R11=94	R12=72	R13=97	R14=96	R15=97	Re=93



L.T.F.

QLUX DOB AC Line Voltage LED Series

QLUXDOBAL2008W30LED92740 8W 200mm Linear
Selectable CCT Under Cabinet LED Board

ABSOLUTE MAXIMUM RATINGS (Ta=25°C)

Parameter	Symbol	Value	Unit
Voltage	V in	132	Vac
Operating Temperature	---	-35~+50	°C
LED Solder Temperature	Ts	110	°C
Storage Temperature	Tstg	-40~+100	°C
ESD Sensitivity (HBM)	---	±4000	V
Surge	---	2500	Vac

MECHANICAL SPECIFICATIONS

LED Board Dimensions	Control Board Dimensions
200mm x 19mm	80mm x 19mm

