



QLUXL3053.9W28LED930
3.9W 305mm Linear DC LED Board



Wattage	3.9W
CRI	94.9
Available CCT	2700K, 3000K, Custom
Lumens	≈ 375 lm
Efficacy	97.4 lm/W
Number of LEDs	28
Beam Angle	120°
Dimensions	305mm x 21mm
Dimming	Constant Current Reduction



FEATURES

- Superior Color Rendering CRI 94.9
- High efficacy lumen output 97.4 lm/W
- 76mm cut lengths with solder pads
- LM-80 compliant LEDs
- Tight Binning 3 Step Mac Adam Ellipses
- Uniform & crisp light source intensity
- Hot Spot Free Design
- Extra thin low profile
- Low heat generation, easy thermal management
- Easy to fit in new design or retrofit applications

APPLICATIONS

Ideal for new and retrofit architectural designs and lighting fixtures.

Indoor Lighting

- Ceiling Light
- Wall Sconces
- Table Lamps
- Fixtures
- Signage

Outdoor Lighting

- Street Light
- Marker Light
- Wall Sconces
- Signage Light

ELECTRICAL SPECIFICATIONS

Model #	CCT	Typ. Wattage	Typ. Forward Voltage	Max. Forward Voltage	Typ. Forward Current	Max. Forward Current
QLUXL3053.9W28LED927	2700	3.9W	24V	26V	160mA	220mA
QLUXL3053.9W28LED930	3000					
QLUXL3053.9W28LED9-XX	Custom CCT					



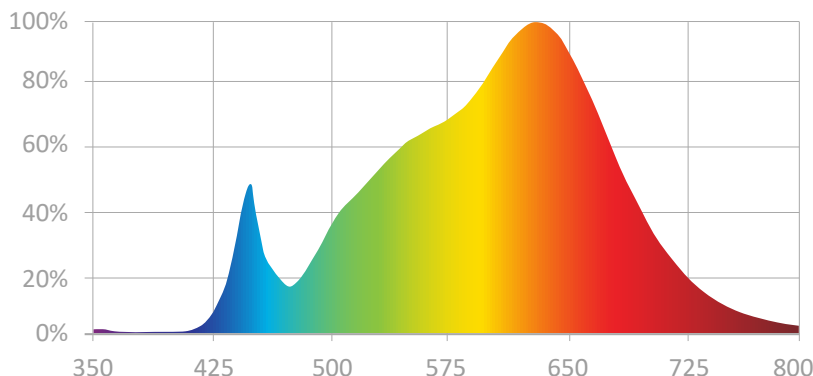
L.T.F.

QLUX DC LED Series



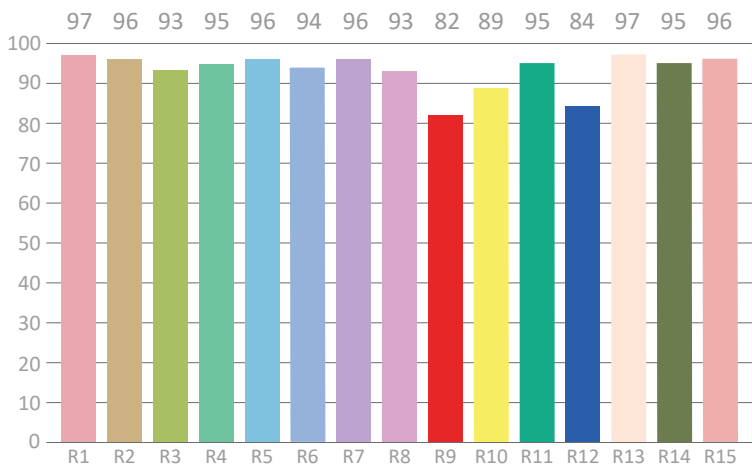
**QLUXL3053.9W28LED930
3.9W 305mm Linear DC LED Board**

SPECTRORADIOMETRIC CHARACTERISTICS - 3000K



Luminous Flux: 375.17 lm
Radiant Flux: 1.401 W
Efficacy: 97.4 lm/W
Nominal CCT: LED_3000K
 $x_0=0.4338$ $y_0=0.4030$
Chromaticity Coordinates:
 $x=0.4445$ $y=0.4043$ $u'=0.2554$ $v'=0.5226$
Chromaticity Difference: -0.00088Duv
CCT: 2878 K

CRI TEST RESULTS - 3000K



Color Rendering Index (CRI): Ra=94.9
Dominant Wavelength: 582 nm(E)
Peak Wavelength: 635 nm
Colour Fidelity Index: Rf=91
Gamut Index: Rg=103
Color Purity: 0.5506
Color Ratio: Kr=44.0% Kg=48.4% Kb=7.5%
Bandwidth: 158.2 nm

R1=97	R2=96	R3=93	R4=95	R5=96	R6=94	R7=96	R8=93
R9=82	R10=89	R11=95	R12=84	R13=97	R14=95	R15=96	Re=93



L.T.F.

QLUX DC LED Series

QLUXL3053.9W28LED930
3.9W 305mm Linear DC LED Board



ABSOLUTE MAXIMUM RATINGS (Ta=25°C)

	Symbol	Absolute Maximum Rating	Unit
Forward Current	If	220	mA
Peak Power	P	5.28	W
Operating Temperature	TOPR	-30~+100	°C
Storage Temperature	Tstg	-40~100	°C
Hand soldering condition	Tsld	3.5sec@350°C	sec
Case Temperature	Tc	100	°C
LED Junction Temperature	Tj	125	°C

MECHANICAL SPECIFICATIONS

Board Dimensions
305mm x 21mm

