



**QLUXL30512W28LED930**  
**12W 305mm Linear DC LED Board**



<b>Wattage</b>	12W
<b>CRI</b>	95.2
<b>Available CCT</b>	2700K, 3000K, Custom
<b>Lumens</b>	≈ 907 lm
<b>Efficacy</b>	82.5 lm/W
<b>Number of LEDs</b>	28
<b>Beam Angle</b>	120°
<b>Dimensions</b>	305mm x 21mm
<b>Dimming</b>	Constant Current Reduction



## FEATURES

- Superior Color Rendering CRI 95.2
- High efficacy lumen output 82.5 lm/W
- 76mm cut lengths with solder pads
- LM-80 compliant LEDs
- Tight Binning 3 Step Mac Adam Ellipses
- Uniform & crisp light source intensity
- Hot Spot Free Design
- Extra thin low profile
- Low heat generation, easy thermal management
- Easy to fit in new design or retrofit applications

## APPLICATIONS

Ideal for new and retrofit architectural designs and lighting fixtures.

### Indoor Lighting

- Ceiling Light
- Wall Sconces
- Table Lamps
- Fixtures
- Signage

### Outdoor Lighting

- Street Light
- Marker Light
- Wall Sconces
- Signage Light

## ELECTRICAL SPECIFICATIONS

Model #	CCT	Typ. Wattage	Typ. Forward Voltage	Max. Forward Voltage	Typ. Forward Current	Max. Forward Current
QLUXL30512W28LED927	2700	12W	24V	26V	500mA	640mA
QLUXL30512W28LED930	3000					
QLUXL30512W28LED9-XX	Custom CCT					



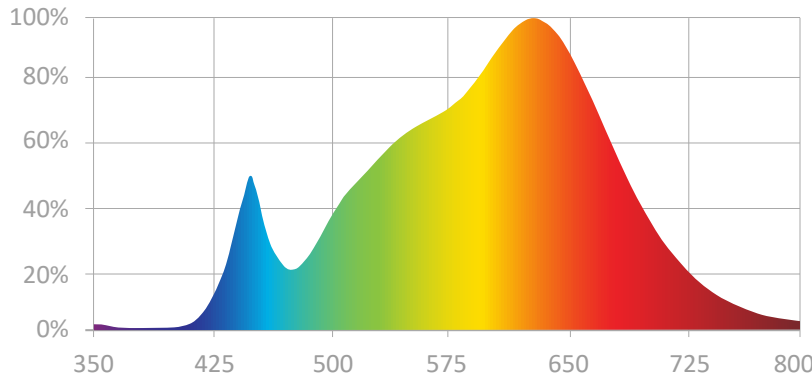
**L.T.F.**

**QLUX DC LED Series**



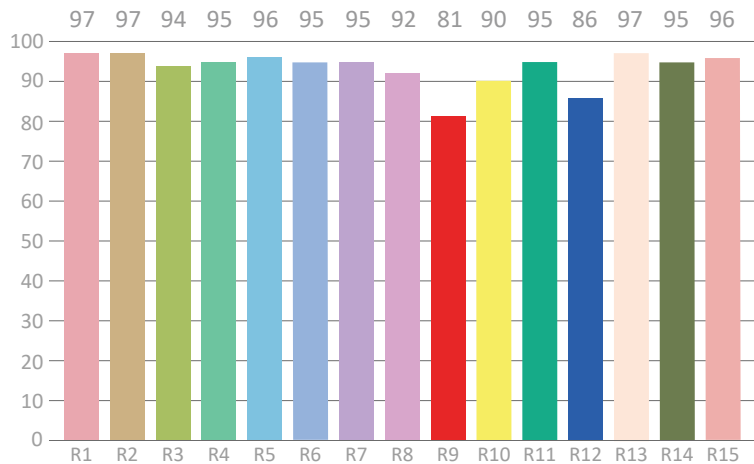
**QLUXL30512W28LED930  
12W 305mm Linear DC LED Board**

**SPECTRORADIOMETRIC CHARACTERISTICS - 3000K**



**Luminous Flux:** 907.37 lm  
**Radiant Flux:** 3.337 W  
**Efficacy:** 82.5 lm/W  
**Nominal CCT:** LED\_3000K  
 $x_0=0.4338$   $y_0=0.4030$   
**Chromaticity Coordinates:**  
 $x=0.4355$   $y=0.3979$   $u'=0.2523$   $v'=0.5187$   
**Chromaticity Difference:** -0.00227Duv  
**CCT:** 2974 K

**CRI TEST RESULTS - 3000K**



**Color Rendering Index (CRI):** Ra=95.2  
**Dominant Wavelength:** 582 nm(E)  
**Peak Wavelength:** 630 nm  
**Colour Fidelity Index:** Rf=91  
**Gamut Index:** Rg=103  
**Color Purity:** 0.5046  
**Color Ratio:** Kr=43.5% Kg=48.6% Kb=7.9%  
**Bandwidth:** 163.4 nm

R1=97	R2=97	R3=94	R4=95	R5=96	R6=95	R7=95	R8=92
R9=81	R10=90	R11=95	R12=86	R13=97	R14=95	R15=96	Re=94



**L.T.F.**

**QLUX DC LED Series**



**QLUXL30512W28LED930  
12W 305mm Linear DC LED Board**

### ABSOLUTE MAXIMUM RATINGS (Ta=25°C)

	Symbol	Absolute Maximum Rating	Unit
Forward Current	If	640	mA
Peak Power	P	16.64	W
Operating Temperature	TOPR	-30~+100	°C
Storage Temperature	Tstg	-40~100	°C
Hand soldering condition	Tsld	3.5sec@350°C	sec
Case Temperature	Tc	100	°C
LED Junction Temperature	Tj	125	°C

### MECHANICAL SPECIFICATIONS

<b>Board Dimensions</b>
305mm x 21mm

