

**QLUXR895W24LED930K-2**  
89MM OD Ring shaped DC LED Board



<b>Wattage</b>	5W
<b>CRI</b>	93
<b>Available CCT</b>	2700K, 3000K
<b>Lumens</b>	615lm
<b>Efficacy</b>	124 lm/W
<b>Number of LEDs</b>	24
<b>Beam Angle</b>	120°
<b>Dimensions</b>	89mm (OD) x 70mm (ID)
<b>Dimming</b>	Constant Current Reduction



**FEATURES**

- Superior color rendering CRI 91, TLCI-2012 90
- High efficacy lumen output 135.7 lm/W
- LM-80 compliant LEDs
- Tight binning 2 step Mac Adam Ellipses
- Uniform & crisp light source intensity
- Hot spot free design
- Exceed Energy Star lumen maintenance requirements
- Extra thin low profile
- Low heat generation, easy thermal management
- Easy to fit in new design or retrofit applications

**APPLICATIONS**

Ideal for new and retrofit architectural designs and lighting fixtures

**Indoor Lighting**

- Recessed can light
- Ceiling light
- Wall sconces
- Table lamps
- Fixtures
- Signage

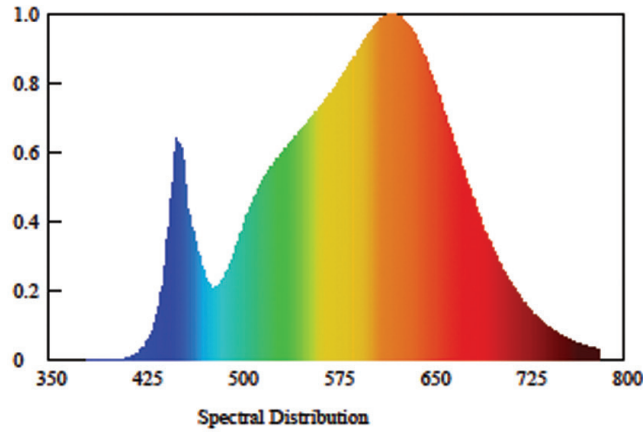
**Outdoor Lighting**

- Street lighting
- Marker light
- Wall sconces
- Signage light

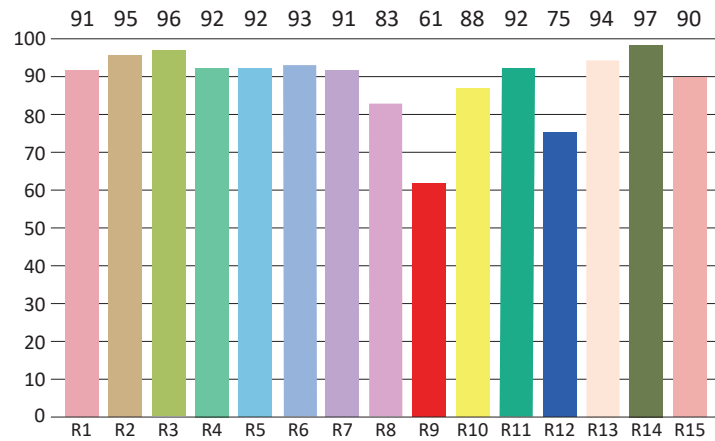
**MODEL SPECIFICATIONS**

Model Number	CCT	Wattage	Typ. Forward Voltage	Min. Forward Voltage	Max. Forward Voltage	Typ. Forward Current	Max. Forward Current
QLUXR895W24LED927K-2	2700K	5W	34V DC	30V DC	42V DC	150mA	300mA
QLUXR895W24LED930K-2	3000K						
QLUXR895W24LED9(XX)K-2	(Custom CCT)						

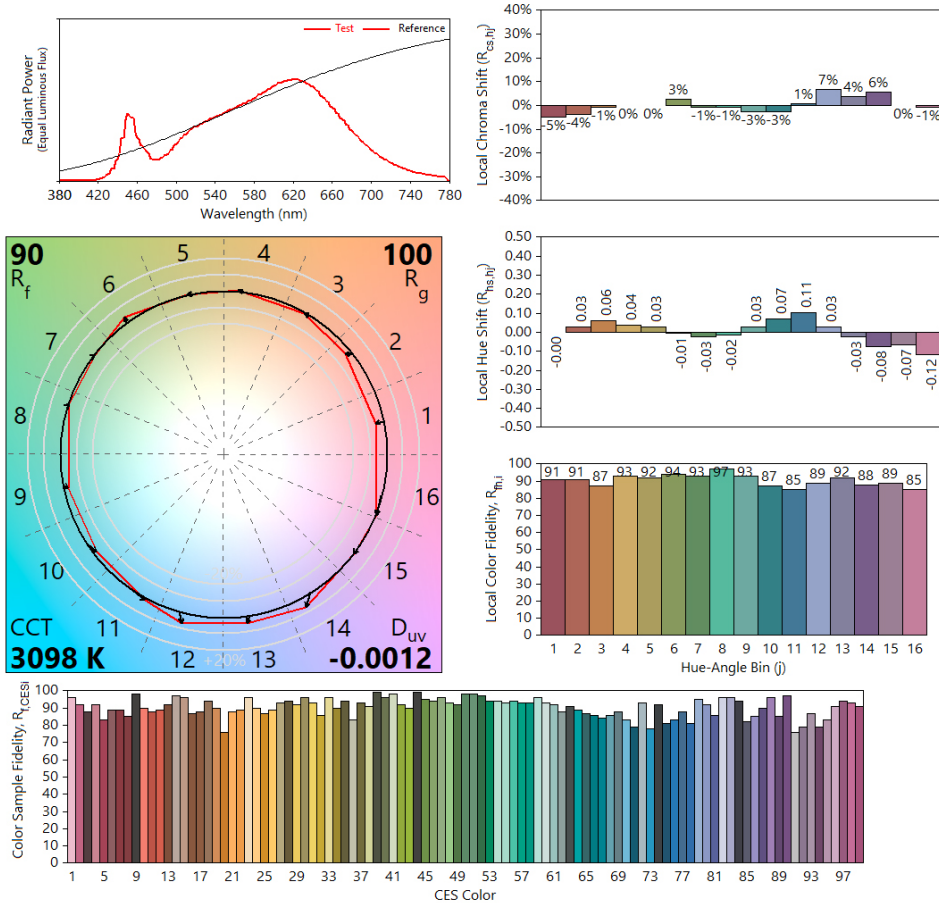
### SPECTRORADIOMETRIC CHARACTERISTICS



### CRI TEST RESULTS (3000K)



**TM-30 CHART**



**ABSOLUTE MAXIMUM RATINGS (Ta=25°C)**

	Symbol	Absolute Maximum Rating	Unit
Forward Current	I <sub>f</sub>	300	mA
Peak Power	P	5W	W
Operating Temperature	TOPR	-30~+100	°C
Storage Temperature	Tstg	-40~100	°C
Hand Soldering Condition	Tsld	3.5 sec @ 350°C	sec
Case Temperature	T <sub>c</sub>	100	°C
LED Junction Temperature	T <sub>j</sub>	125	°C

### MECHANICAL SPECS

DIMENSIONS
89mm (OD) x 70 (ID) x 1.66mm

