



**QLUXR895W24LED930K-2 89mm OD  
Ring Shaped DC LED Board**



<b>Wattage</b>	5W
<b>CRI</b>	93
<b>Available CCT</b>	2700K, 3000K
<b>Lumens</b>	≈ 615 lm
<b>Efficacy</b>	124 lm/W
<b>Number of LEDs</b>	24
<b>Beam Angle</b>	120°
<b>Dimensions</b>	89mm OD, 70mm ID
<b>Dimming</b>	Constant Current Reduction



## FEATURES

- Superior Color Rendering CRI 90.8
- High efficacy lumen output 135.7 lm/W
- LM-80 compliant LEDs
- Tight Binning 3 Step Mac Adam Ellipses
- Uniform & crisp light source intensity
- Hot Spot Free Design
- Exceed ENERGY STAR lumen maintenance requirements
- Extra thin low profile
- Low heat generation, easy thermal management
- Easy to fit in new design or retrofit applications

## APPLICATIONS

Ideal for new and retrofit architectural designs and lighting fixtures.

### Indoor Lighting

- Recessed Can Light
- Ceiling Light
- Wall Sconces
- Table Lamps
- Fixtures
- Signage

### Outdoor Lighting

- Street Light
- Marker Light
- Wall Sconces
- Signage Light

## ELECTRICAL SPECIFICATIONS

Model #	CCT	Typ. Wattage	Typ. Forward Voltage	Min. Forward Voltage	Max. Forward Voltage	Typ. Forward Current	Max. Forward Current
QLUXR895W24LED927K-2	2700	5W	34V DC	30V DC	42V DC	150mA	300mA
QLUXR895W24LED930K-2	3000						
QLUXR895W24LED9(XX)K-2	Custom CCT						



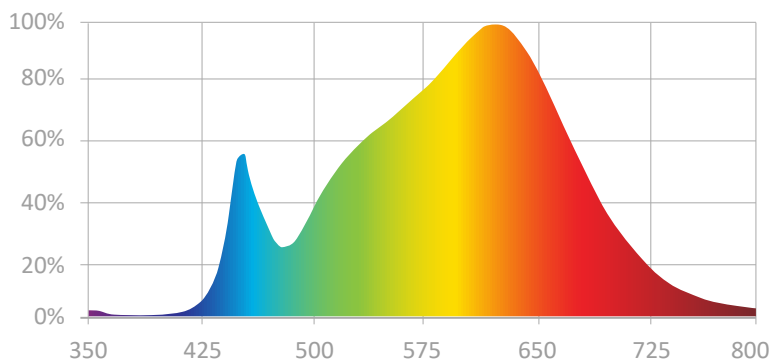
**L.T.F.**

**QLUX DC LED Series**



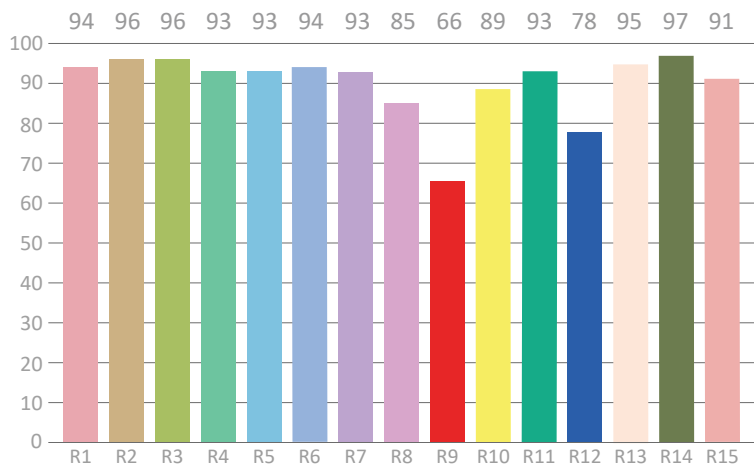
**QLUXR895W24LED930K-2 89mm OD  
Ring Shaped DC LED Board**

**SPECTRORADIOMETRIC CHARACTERISTICS - 3000K**



**Luminous Flux:** 614.99 lm  
**Radiant Flux:** 2.307 W  
**Efficacy:** 124 lm/W  
**Nominal CCT:** LED\_3000K  
 x0=0.4338 y0=0.4030  
**Chromaticity Coordinates:**  
 x=0.4314 y=0.3987 u'=0.2493 v'=0.5184  
**Chromaticity Difference:** -0.0014Duv  
**CCT:** 3051 K

**CRI TEST RESULTS - 3000K**



**Color Rendering Index (CRI):** Ra=93  
**Dominant Wavelength:** 582.0 nm(E)  
**Peak Wavelength:** 625 nm  
**Colour Fidelity Index:** Rf=90  
**Gamut Index:** Rg=100  
**Color Purity:** 0.4921  
**Color Ratio:** Kr=43.3% Kg=48.8% Kb=7.9%  
**Color Tolerance (SDCM):** 4.4  
**Bandwidth:** 163 nm

R1=94	R2=96	R3=96	R4=93	R5=93	R6=94	R7=93	R8=85
R9=66	R10=89	R11=93	R12=78	R13=95	R14=97	R15=91	Re=90



**L.T.F.**

**QLUX DC LED Series**

**QLUXR895W24LED930K-2 89mm OD  
Ring Shaped DC LED Board**



## TM-30 TEST RESULTS - 3000K

### ABSOLUTE MAXIMUM RATINGS (Ta=25°C)

	Symbol	Absolute Maximum Rating	Unit
Forward Current	If	300	mA
Peak Power	P	5W	W
Operating Temperature	TOPR	-30~+100	°C
Storage Temperature	Tstg	-40~100	°C
Hand soldering condition	Tsld	3.5sec@350°C	sec
Case Temperature	Tc	100	°C
LED Junction Temperature	Tj	125	°C

### MECHANICAL SPECIFICATIONS

Board Dimensions
89mm OD, 70mm ID

