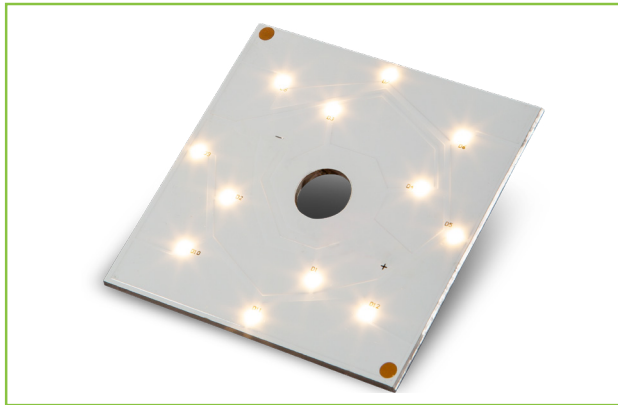




L.T.F.

QLUXS DC CSP LED Series

QLUXS5715W12LED 15W 57mm Square Chip Scale Package LED Board



Wattage	15W
CRI, R9	96, 80
Available CCT	2700K, 3000K
Lumens	1184 lm
Efficacy	78.9 lm/W
Number of LEDs	12
Beam Angle	120°
Dimensions	57x57mm
Dimming	Constant Current Reduction



RoHS



FEATURES

- Superior color rendering CRI 96, R9 80+
- High efficacy lumen output 78.9 lm/W
- LM-80 compliant LEDs
- Tight Binning 3 Step Mac Adam Ellipses
- Uniform & crisp light source intensity
- Hot Spot Free Design
- Exceed ENERGY STAR lumen maintenance requirements
- Extra thin low profile
- Low heat generation, easy thermal management
- Easy to fit in new design or retrofit applications

APPLICATIONS

Ideal for new and retrofit architectural designs and lighting fixtures.

Indoor Lighting

- Recessed can light
- Ceiling light
- Wall sconces
- Table lamps
- Fixtures
- Signage

Outdoor Lighting

- Street light
- Marker light
- Wall sconces
- Signage light

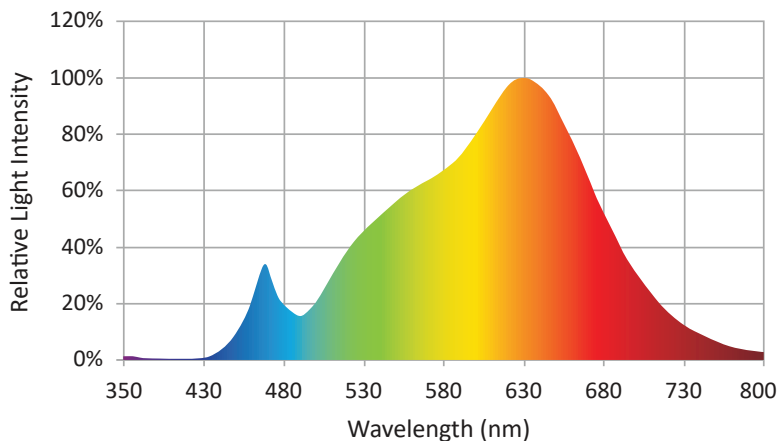
ELECTRICAL SPECIFICATIONS

Model #	CCT	Typ. Wattage	Typ. Forward Voltage	Min. Forward Voltage	Typ. Forward Current	Max. Forward Current
QLUXS5715W12LED927	2700	15W	36V	29V	400mA	1500mA
QLUXS5715W12LED930	3000					



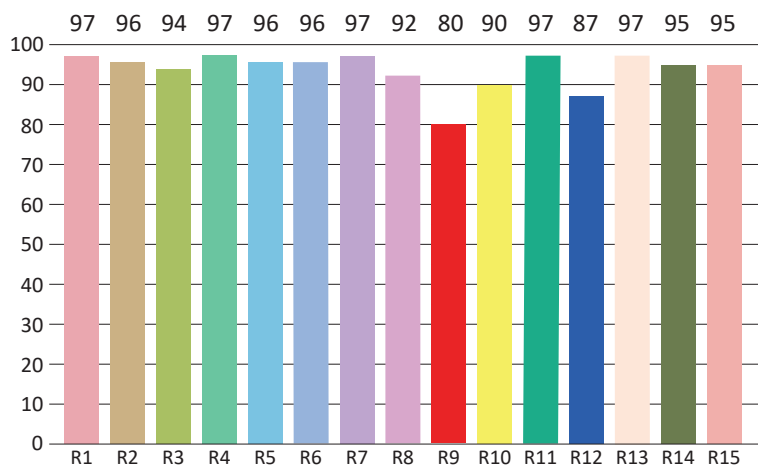
QLUXS5715W12LED
Chip Scale Package LED Board

SPECTRORADIOMETRIC CHARACTERISTICS - 2700K



Luminous Flux: 1210.72 lm
Radiant Flux: 4664mW
Efficacy: 78.9 lm/W
Nominal CCT: LED_3000K
 x0=0.4338 y0=0.4030
Chromaticity Coordinates:
 x=0.4532 y=0.4129 u'=0.2572 v'=0.5272
Chromaticity Difference: +0.00149Duv
CCT: 2814 K

CRI TEST RESULTS - 2700K



Color Rendering Index (CRI): 95.7
Dominant Wavelength: 582.0 nm(E)
Peak Wavelength: 630nm
Colour Fidelity Index: Rf=93
Gamut Index: Rg=101
Color Purity: 0.6007
Color Ratio: Kr=44.5% Kg=47.9% Kb=7.5%
Bandwidth: 156.4nm

R1=97	R2=96	R3=94	R4=97	R5=96	R6=96	R7=97	R8=92
R9=80	R10=90	R11=97	R12=87	R13=97	R14=95	R15=95	Re=94



ABSOLUTE MAXIMUM RATINGS (Ta=25°C)

	Symbol	Absolute Maximum Rating	Unit
Forward Current	If	1500	mA
Peak Power	P	25.2	W
Reverse Voltage	vr		V
Operating Temperature	TOPR	-30~+100	°C
Storage Temperature	Tstg	-40~100	°C
Hand soldering condition	Tsld	3.5sec@350°C	sec
Case Temperature	Tc	100	°C
LED Junction Temperature	Tj	125	°C

MECHANICAL SPECIFICATIONS

Board Dimensions
57 x 57mm

