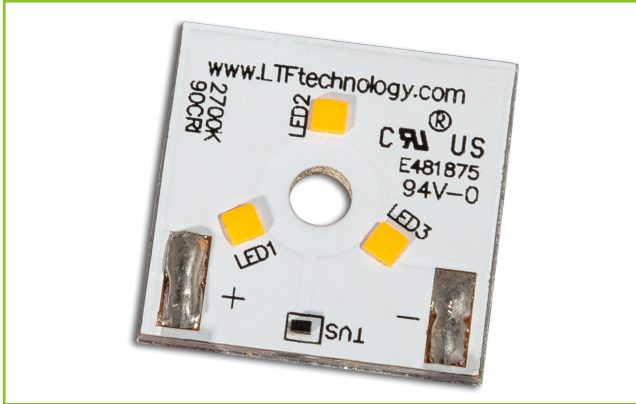




L.T.F.

QLUXS DC CSP LED Series

QLUXS186W3LED 6W 18mm Square Chip Scale Package LED Board



| | |
|-----------------------|----------------------------|
| Wattage | 6W |
| CRI, R9 | 97, 81 |
| Available CCT | 2700K, 3000K |
| Lumens | ≈ 444 lm |
| Efficacy | 74 lm/W |
| Number of LEDs | 3 |
| Beam Angle | 120° |
| Dimensions | 18x18mm |
| Dimming | Constant Current Reduction |



FEATURES

- Superior Color Rendering CRI 97, R9 80+
- High efficacy lumen output 74 lm/W
- LM-80 compliant LEDs
- Tight Binning 3 Step Mac Adam Ellipses
- Uniform & crisp light source intensity
- Hot Spot Free Design
- Exceed ENERGY STAR lumen maintenance requirements
- Extra thin low profile
- Low heat generation, easy thermal management
- Easy to fit in new design or retrofit applications

APPLICATIONS

Ideal for new and retrofit architectural designs and lighting fixtures.

Indoor Lighting

- Recessed Can Light
- Ceiling Light
- Wall Sconces
- Table Lamps
- Fixtures
- Signage

Outdoor Lighting

- Street Light
- Marker Light
- Wall Sconces
- Signage Light

ELECTRICAL SPECIFICATIONS

| Model # | CCT | Typ. Wattage | Typ. Forward Voltage | Min. Forward Voltage | Typ. Forward Current | Max. Forward Current |
|------------------|------|--------------|----------------------|----------------------|----------------------|----------------------|
| QLUXS186W3LED927 | 2700 | 6W | 9V | 7.2V | 700mA | 1000mA |
| QLUXS186W3LED930 | 3000 | | | | | |



L.T.F.

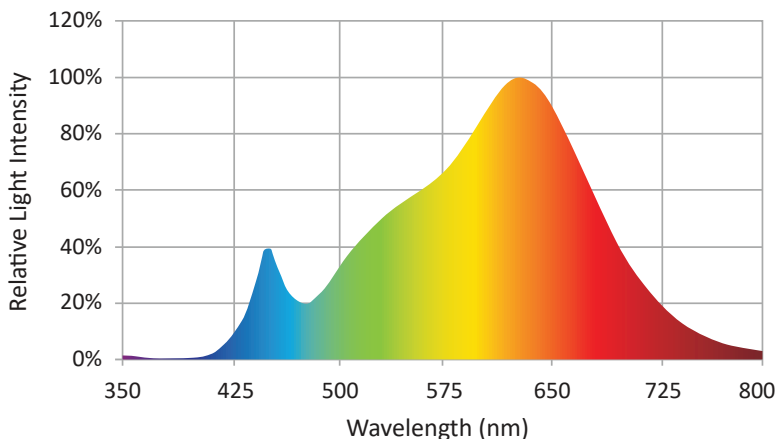
QLUX DC CSP LED Series



QLUXS253LED9

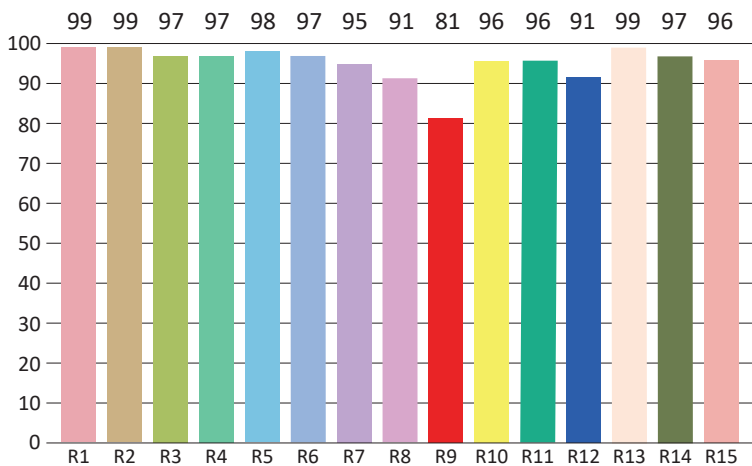
Chip Scale Package LED Board

SPECTRORADIOMETRIC CHARACTERISTICS - 2700K



Luminous Flux: 443.8 lm
Radiant Flux: 1726 mW
Efficacy: 74 lm/W
Nominal CCT: LED_3000K
 x0=0.4338 y0=0.4030
Chromaticity Coordinates:
 x=0.4481 y=0.3990 u'=0.26 v'=0.5211
Chromaticity Difference: -0.00331Duv
CCT: 2780 K

CRI TEST RESULTS - 2700K



Color Rendering Index (CRI): Ra=96.5
Dominant Wavelength: 584.0 nm(E)
Peak Wavelength: 630nm
Colour Fidelity Index: Rf=92
Gamut Index: Rg=102
Color Purity: 0.5427
Color Ratio: Kr=45.7% Kg=46.8% Kb=7.6%
Bandwidth: 151.1 nm

| | | | | | | | |
|-------|--------|--------|--------|--------|--------|--------|-------|
| R1=99 | R2=99 | R3=97 | R4=97 | R5=98 | R6=97 | R7=95 | R8=91 |
| R9=81 | R10=96 | R11=96 | R12=91 | R13=99 | R14=97 | R15=96 | Re=95 |



L.T.F.

QLUX DC CSP LED Series

QLUXS253LED9

Chip Scale Package LED Board



ABSOLUTE MAXIMUM RATINGS (Ta=25°C)

| | Symbol | Absolute Maximum Rating | Unit |
|--------------------------|--------|-------------------------|------|
| Forward Current | If | 1000 | mA |
| Peak Power | P | 6.2W | W |
| Reverse Voltage | vr | | V |
| Operating Temperature | TOPR | -30~+100 | °C |
| Storage Temperature | Tstg | -40~100 | °C |
| Hand soldering condition | Tsld | 3.5sec@350°C | sec |
| Case Temperature | Tc | 100 | °C |
| LED Junction Temperature | Tj | 125 | °C |

MECHANICAL SPECIFICATIONS

| |
|-------------------------|
| Board Dimensions |
| 18 x 18mm |

