



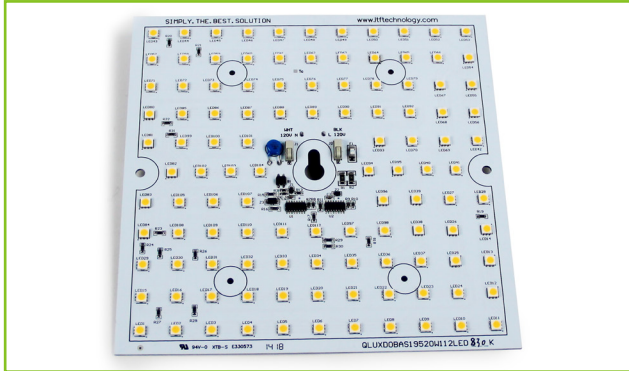
**L.T.F.**

## DOBi AC Line Voltage LED Boards



### Dimmable 20W Square 195x195mm QLUXDOBAS19520W112LED DOBi Series

**DOBi**



<b>Wattage</b>	20W
<b>Input</b>	120V AC 50/60 Hz
<b>CRI</b>	80, 90+
<b>CCT Options</b>	2400K - 5000K
<b>Custom CCT</b>	Available
<b>Size</b>	195x195mm
<b>Dimming</b>	ELV, Triac
<b>Optional Dimming</b>	0-10V
<b>Beam Angle</b>	160°



**RoHS**



### FEATURES

- AC line voltage driver on board module;  
No external drivers or transformers required
- High efficacy lumen output: >80 lm/W
- Smooth dimming with ELV & Triac dimmers
- Optional 0-10V dimming
- 220-240V, 277V AC input with optional voltage converter
- LM-80 compliant LEDs
- High Color Renedering Index (CRI) Ra max. 98

- Tight binning 3 Step Mac Adam Ellipses
- Low heat generation, easy thermal management

### APPLICATIONS

- New or retrofit OEM fixtures
- Indoor or outdoor applications
- Architectural and commercial
- Flush mount and recessed fixtures

### AVAILABLE CONFIGURATIONS

Model Number	Suffix	CRI	CCT
QLUXDOBAS19520W112LED	- 822	80+	2200K
QLUXDOBAS19520W112LED	- 825		2500K
QLUXDOBAS19520W112LED	- 827		2700K
QLUXDOBAS19520W112LED	- 830		3000K
QLUXDOBAS19520W112LED	- 832		3200K
QLUXDOBAS19520W112LED	- 835		3500K
QLUXDOBAS19520W112LED	- 840		4000K
QLUXDOBAS19520W112LED	- 850		5000K

Model Number	Suffix	CRI	CCT
QLUXDOBAS19520W112LED	- 922	90+	2200K
QLUXDOBAS19520W112LED	- 925		2500K
QLUXDOBAS19520W112LED	- 927		2700K
QLUXDOBAS19520W112LED	- 930		3000K
QLUXDOBAS19520W112LED	- 932		3200K
QLUXDOBAS19520W112LED	- 935		3500K
QLUXDOBAS19520W112LED	- 940		4000K
QLUXDOBAS19520W112LED	- 950		5000K

Custom CCT available

[1] Luminous flux and efficacy are typical value, measured by an integrated phere at 25°C, tolerance: ± 10%;

[2] Ra/CRI is measured with tolerance: ± 2;

[3] Tolerance of power: ± 1W.

L.T.F., L.L.C. PHONE: (847) 498-5832 FAX: (773) 337-5628 EMAIL: [LTFsales@ltftechnology.com](mailto:LTFsales@ltftechnology.com)

Company's Address: 11966 Oak Creek Pkwy. Unit H. Huntley IL 60142 U.S.A. [www.ltftechnology.com](http://www.ltftechnology.com)

© L.T.F., L.L.C. All rights reserved. L.T.F. reserves the right to change specifications for product improvements without notification.



**L.T.F.**

## DOBi AC Line Voltage LED Boards

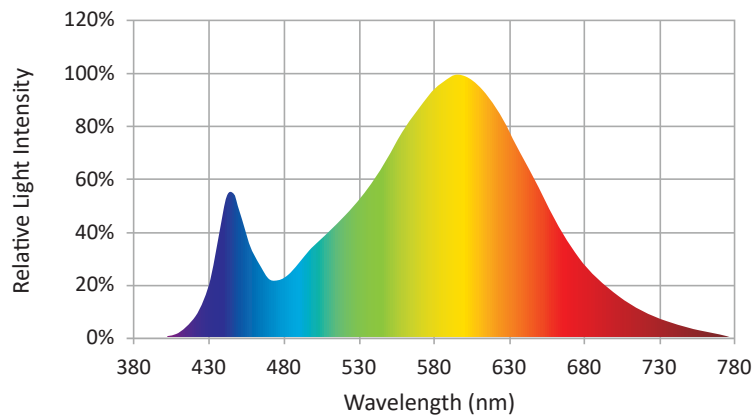


### Dimmable 20W Square 195x195mm QLUXDOBAS19520W112LED DOBi Series

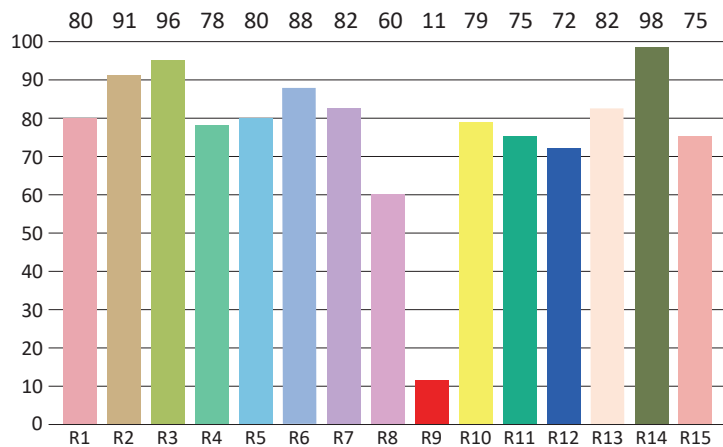
CIE Colorimetric Parameters*	
Chromaticity Coordinates	x=0.4338 y=0.3954
CCT	2982K
Peak Wavelength	602.6nm
Dominant Wavelength	584.1nm
Rendering Index	81.7
Color Ratio	R=22.9%, G=75.3%, B=1.7%
Half Bandwidth	128.5nm
Color Purity	48.9%

\* Test result shown based on 3000 CCT, 80 CRI model

### SPECTRORADIOMETRIC CHARACTERISTICS



### CRI TEST RESULTS



R1=80	R2=91	R3=96	R4=78	R5=80	R6=88	R7=82	R8=60
R9=11	R10=79	R11=75	R12=72	R13=82	R14=98	R15=75	

\* Test result shown based on 3000 CCT, 80 CRI model



**L.T.F.**

## DOBi AC Line Voltage LED Boards

### Dimmable 20W Square 195x195mm QLUXDOBAS19520W112LED DOBi Series

Photometric Parameters*	
<b>Luminous Flux:</b>	1790.03lm
<b>Radiant Power:</b>	5219mW
<b>Efficacy:</b>	78.51lm/W

\* Test result shown based on 3000 CCT, 80 CRI model

Electric Parameters	
<b>Voltage</b>	U=120.4V
<b>Current</b>	I=0.19A
<b>Power</b>	P=22.8W
<b>Power Factor</b>	PF=0.994

### ABSOLUTE MAXIMUM RATINGS (Ta=25°C)

Parameter	Symbol	Value	Unit
Voltage	V in	132	Vac
LED Solder Temperature	Ts	-20~+85	°C
Storage Temperature	Tstg	-40~+100	°C
ESD Sensitivity (HBM)	---	±4000	V
Surge	---	1000	Vac

### MECHANICAL SPECIFICATIONS

