

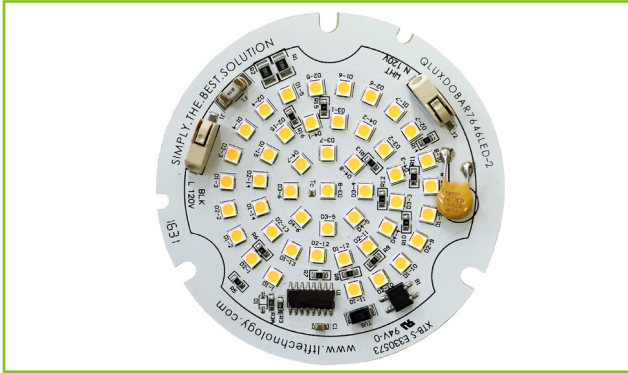


L.T.F.

DOBi AC Line Voltage LED Boards



DOBi



Dimmable 12W Round 76mm (OD) QLUXDOBAR7612W46LED DOBi Series

Wattage	12W
Input	120V AC 50/60 Hz
CRI	90+
CCT Options	2700K - 5000K
Custom CCT	Available
Size	76mm (OD)
Dimming	ELV, Triac
Optional Dimming	0-10V
Beam Angle	160°



RoHS



FEATURES

- AC line voltage driver on board module; No external drivers or transformers required
- High efficacy lumen output: > 94 lm/W
- Smooth dimming with ELV & Triac dimmers
- Dimming range <1% - 100%
- Optional 0-10V dimming
- 220-240V, 277V AC input with optional voltage converter
- LM-80 compliant LEDs
- High Color Renedering Index (CRI) Ra max. 98

- Tight binning 3 Step Mac Adam Ellipses
- Low heat generation, easy thermal management

APPLICATIONS

- New or retrofit OEM fixtures
- Indoor or outdoor applications
- Architectural and commercial
- Flush mount and recessed fixtures

AVAILABLE CONFIGURATIONS

Model Number	Suffix	CRI	CCT	Lumens
QLUXDOBAR7612W46LED	- 922	90+	2200K	1105lm
QLUXDOBAR7612W46LED	- 925		2500K	1120lm
QLUXDOBAR7612W46LED	- 927		2700K	1130lm
QLUXDOBAR7612W46LED	- 930		3000K	1140lm
QLUXDOBAR7612W46LED	- 932		3200K	1145lm
QLUXDOBAR7612W46LED	- 935		3500K	1150lm
QLUXDOBAR7612W46LED	- 940		4000K	1170lm
QLUXDOBAR7612W46LED	- 950		5000K	1200lm

Custom CCT available

[1] Luminous flux and efficacy are typical value, measured by an integrated phere at 25°C, tolerance: ± 10%;

[2] Ra/CRI is measured with tolerance: ± 2;

[3] Tolerance of power: ± 1W.



L.T.F.

DOBi AC Line Voltage LED Boards

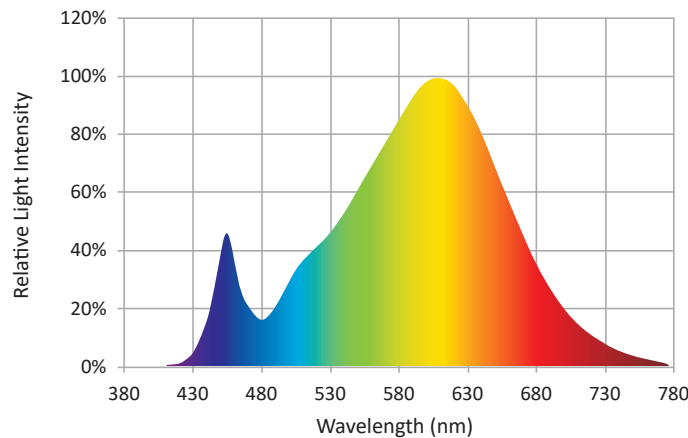


**Dimmable 12W Round 76mm (OD)
QLUXDOBAR7612W46LED DOBi Series**

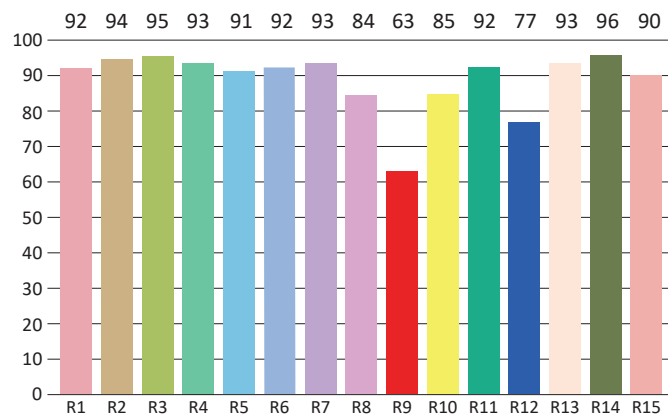
CIE Colorimetric Parameters*	
Chromaticity Coordinates	x=0.4347 y=0.4037
CCT	3035K
Peak Wavelength	625.5nm
Dominant Wavelength	582.6nm
Rendering Index	91.8
Color Ratio	R=23.9%, G=74.5%, B=1.6%
Half Bandwidth	167.5nm
Color Purity	51.7%

* Test result shown based on 3000 CCT model

SPECTRORADIOMETRIC CHARACTERISTICS



CRI TEST RESULTS



R1=92	R2=94	R3=95	R4=93	R5=91	R6=92	R7=93	R8=84
R9=63	R10=85	R11=92	R12=77	R13=93	R14=96	R15=90	

* Test result shown based on 3000 CCT model



L.T.F.

DOBi AC Line Voltage LED Boards



Dimmable 12W Round 76mm (OD) QLUXDOBAR7612W46LED DOBi Series

Photometric Parameters*	
Luminous Flux:	1139.88lm
Radiant Power:	4104.2mW
Efficacy:	94.21lm/W

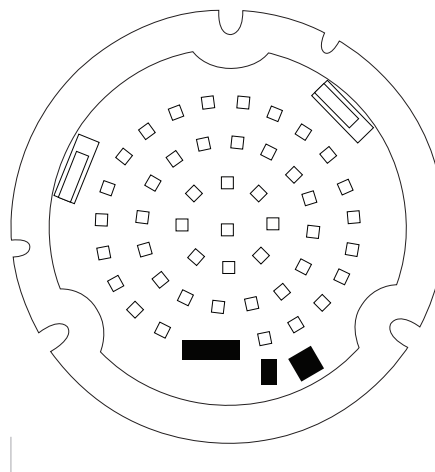
* Test result shown based on 3000 CCT model

Electric Parameters	
Voltage	U=120V
Current	I=0.1A
Power	P=12W
Power Factor	PF=0.97

ABSOLUTE MAXIMUM RATINGS (Ta=25°C)

Parameter	Symbol	Value	Unit
Voltage	V in	150	Vac
LED Solder Temperature	Ts	-20~85	°C
Storage Temperature	Tstg	-40~+100	°C
ESD Sensitivity (HBM)	---	±4000	V
Surge	---	1000	Vac

MECHANICAL SPECIFICATIONS



76mm (OD)