

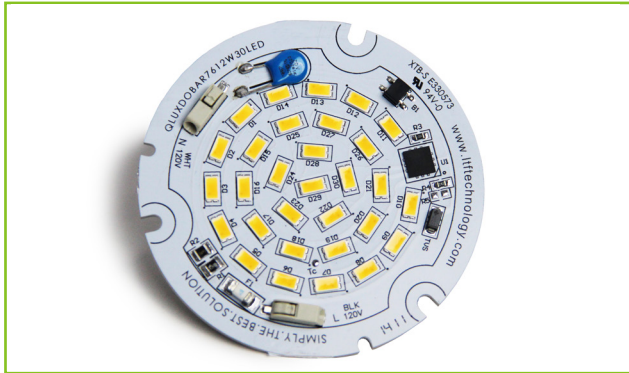


**L.T.F.**

## DOBi AC Line Voltage LED Boards



**DOBi**



### Dimmable 12W Round 76mm (OD) QLUXDOBAR7612W30LED DOBi Series

<b>Wattage</b>	12W
<b>Input</b>	120V AC 50/60 Hz
<b>CRI</b>	80, 90+
<b>CCT Options</b>	2700K - 5000K
<b>Custom CCT</b>	Available
<b>Size</b>	76mm (OD)
<b>Dimming</b>	ELV, Triac
<b>Optional Dimming</b>	0-10V
<b>Beam Angle</b>	160°



**RoHS**



### FEATURES

- AC line voltage driver on board module; No external drivers or transformers required
- High efficacy lumen output: > 65 lm/W
- Smooth dimming with ELV & Triac dimmers
- Dimming range <1% - 100%
- Optional 0-10V dimming
- 220-240V, 277V AC input with optional voltage converter
- LM-80 compliant LEDs
- High Color Renedering Index (CRI) Ra max. 98

- Tight binning 3 Step Mac Adam Ellipses
- Low heat generation, easy thermal management

### APPLICATIONS

- New or retrofit OEM fixtures
- Indoor or outdoor applications
- Architectural and commercial
- Flush mount and recessed fixtures

### AVAILABLE CONFIGURATIONS

Model Number	Suffix	CRI	CCT
QLUXDOBAR7612W30LED	- 822	80+	2200K
QLUXDOBAR7612W30LED	- 825		2500K
QLUXDOBAR7612W30LED	- 827		2700K
QLUXDOBAR7612W30LED	- 830		3000K
QLUXDOBAR7612W30LED	- 832		3200K
QLUXDOBAR7612W30LED	- 835		3500K
QLUXDOBAR7612W30LED	- 840		4000K
QLUXDOBAR7612W30LED	- 850		5000K

Model Number	Suffix	CRI	CCT
QLUXDOBAR7612W30LED	- 922	90+	2200K
QLUXDOBAR7612W30LED	- 925		2500K
QLUXDOBAR7612W30LED	- 927		2700K
QLUXDOBAR7612W30LED	- 930		3000K
QLUXDOBAR7612W30LED	- 932		3200K
QLUXDOBAR7612W30LED	- 935		3500K
QLUXDOBAR7612W30LED	- 940		4000K
QLUXDOBAR7612W30LED	- 950		5000K

Custom CCT available

[1] Luminous flux and efficacy are typical value, measured by an integrated phere at 25°C, tolerance: ± 10%;

[2] Ra/CRI is measured with tolerance: ± 2;

[3] Tolerance of power: ± 1W.



**L.T.F.**

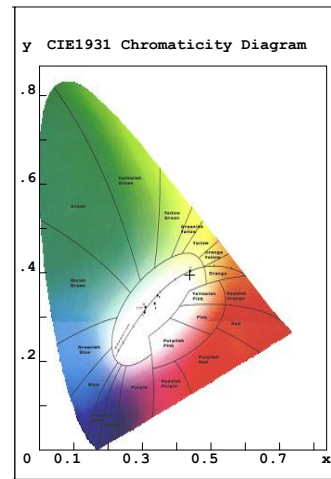
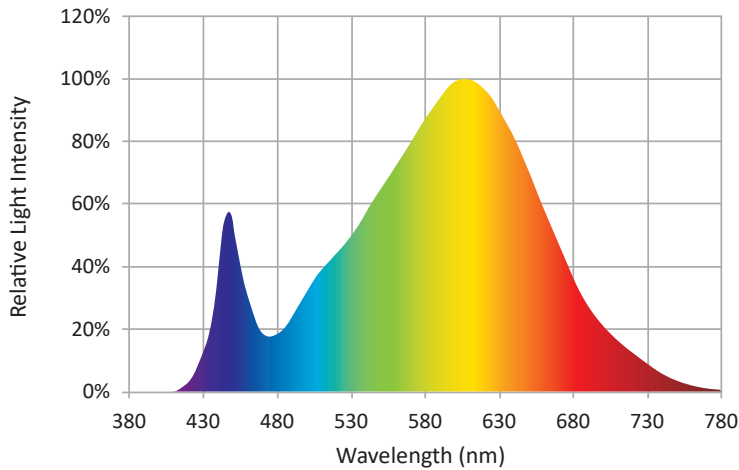
**DOBi AC Line Voltage LED Boards**



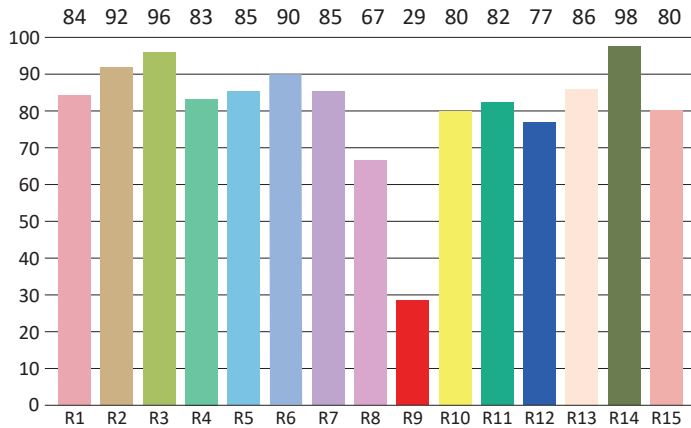
**Dimmable 12W Round 76mm (OD)  
QLUXDOBAR7612W30LED DOBi Series**

CIE Colorimetric Parameters*	
Chromaticity Coordinates	x=0.4383 y=0.3951
CCT	2902K
Peak Wavelength	609.8nm
Dominant Wavelength	584.7nm
Rendering Index	85.3
Color Ratio	R=24.1%, G=74.4%, B=1.5%
Half Bandwidth	137.4nm
Color Purity	50.1%

\* Test result shown based on 3000 CCT, 80 CRI model



**CRI TEST RESULTS**



R1=84	R2=92	R3=96	R4=83	R5=85	R6=90	R7=85	R8=67
R9=29	R10=80	R11=82	R12=77	R13=86	R14=98	R15=80	

\* Test result shown based on 3000 CCT, 80 CRI model



**Dimmable 12W Round 76mm (OD)  
QLUXDOBAR7612W30LED DOBi Series**

Photometric Parameters*	
<b>Luminous Flux:</b>	745.49lm
<b>Radiant Power:</b>	2594.8mW
<b>Efficacy:</b>	64.31lm/W

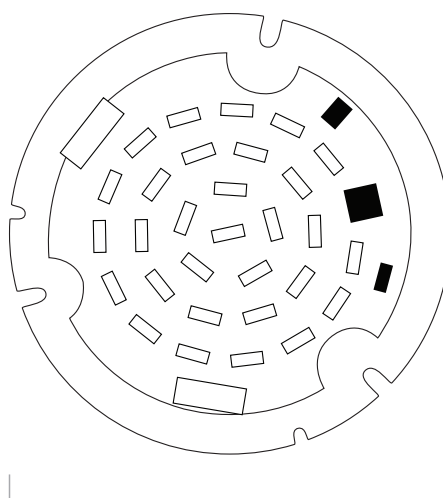
\* Test result shown based on 3000 CCT, 80 CRI model

Electric Parameters	
<b>Voltage</b>	U=120.2V
<b>Current</b>	I=0.097A
<b>Power</b>	P=11.6W
<b>Power Factor</b>	PF=0.995

**ABSOLUTE MAXIMUM RATINGS (Ta=25°C)**

Parameter	Symbol	Value	Unit
Voltage	V in	150	Vac
LED Solder Temperature	Ts	-20~+85	°C
Storage Temperature	Tstg	-40~+100	°C
ESD Sensitivity (HBM)	---	±4000	V
Surge	---	1000	Vac

**MECHANICAL SPECIFICATIONS**



76mm (OD)