

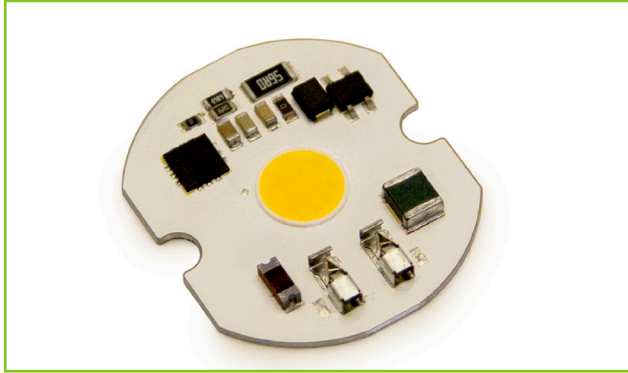


**L.T.F.**

## DOBi AC Line Voltage LED Boards

### Zhaga Optics Compatible 10W Round 44mm (OD) QLUXDOBAR4410W1LED DOBi Series

# DOBi



<b>Wattage</b>	10W
<b>Input</b>	120V AC 50/60 Hz
<b>CRI</b>	91+
<b>CCT Options</b>	2700K - 5000K
<b>Custom CCT</b>	Available
<b>Size</b>	44mm (OD)
<b>Dimming</b>	ELV, Triac
<b>Optional Dimming</b>	0-10V
<b>Beam Angle</b>	160°



**RoHS**



## FEATURES

- AC line voltage driver on board module; No external drivers or transformers required
- Zhaga Optics Compatible
- Smooth dimming with ELV & Triac dimmers
- Dimming range <1% - 100%
- Optional 0-10V dimming
- High efficacy lumen output: > 90 lm/W
- 220-240V, 277V AC input with optional voltage converter
- LM-80 compliant LEDs

- High Color Renedering Index (CRI) Ra max. 98
- Tight binning 3 Step Mac Adam Ellipses
- Low heat generation, easy thermal management

## APPLICATIONS

- New or retrofit OEM fixtures
- Indoor or outdoor applications
- Architectural and commercial
- Flush mount and recessed fixtures

## AVAILABLE CONFIGURATIONS

Model Number	Suffix	CRI	CCT	Lumens
QLUXDOBAR4410WLED	- 927	91+	2700K	860 lm
QLUXDOBAR4410WLED	- 930		3000K	870 lm
QLUXDOBAR4410WLED	- 935		3500K	880 lm
QLUXDOBAR4410WLED	- 940		4000K	900 lm
QLUXDOBAR4410WLED	- 950		5000K	915 lm

Custom CCT available

[1] Luminous flux and efficacy are typical value, measured by an integrated phere at 25°C, tolerance: ± 10%;

[2] Ra/CRI is measured with tolerance: ± 2;

[3] Tolerance of power: ± 1W.



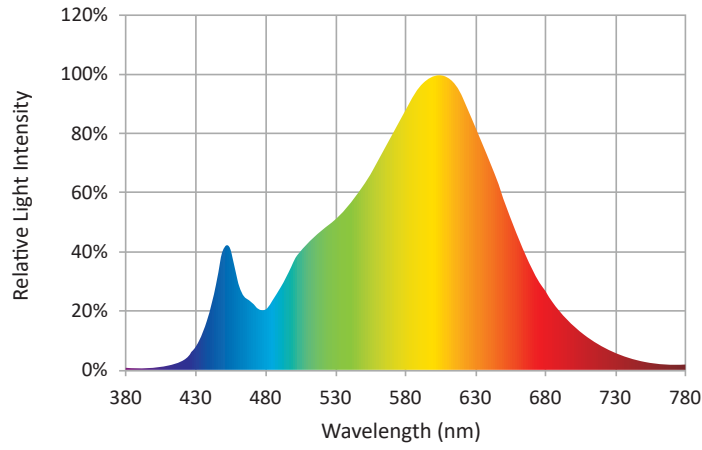
**L.T.F.**

## DOBi AC Line Voltage LED Boards

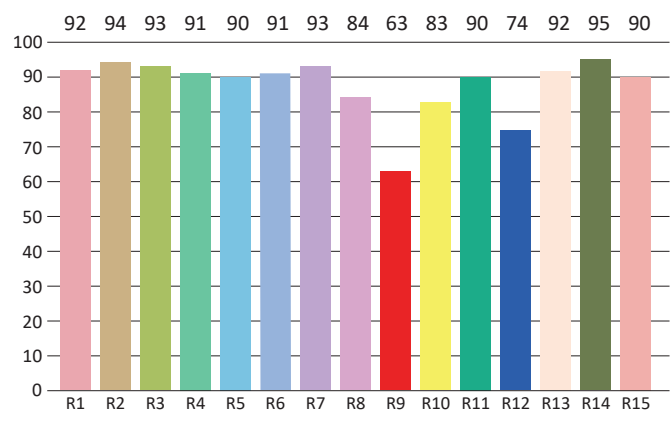
### Zhaga Optics Compatible 10W Round LED Module QLUXDOBAR4410W1LED DOBi Series

CIE Colorimetric Parameters*	
Chromaticity Coordinates	x=0.4289 y=0.3979
CCT	3089K
Peak Wavelength	610 nm
Dominant Wavelength	581 nm
Rendering Index	91.0
Color Ratio	R=42.8%, G=49.7%, B=7.4%
Half Bandwidth	171.8 nm
Color Purity	0.4848

### SPECTRORADIOMETRIC PARAMETERS



### CRI TEST RESULTS



R1=92	R2=94	R3=93	R4=91	R5=90	R6=91	R7=93	R8=84
R9=63	R10=83	R11=90	R12=74	R13=92	R14=95	R15=90	

\* Test result shown based on 3000 CCT, 91 CRI model



**L.T.F.**

## DOBi AC Line Voltage LED Boards

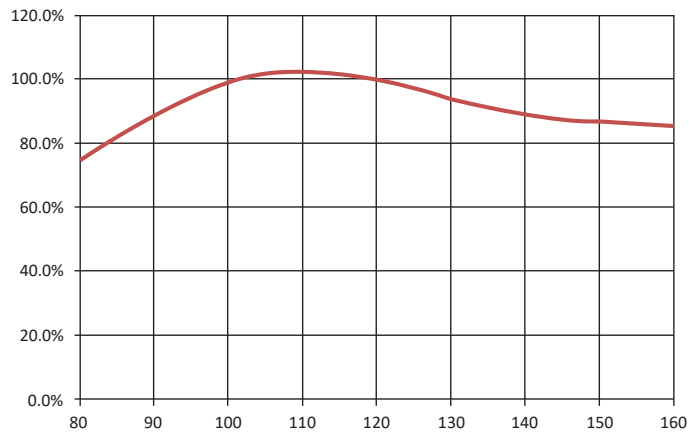
### Zhaga Optics Compatible 10W Round LED Module QLUXDOBAR4410W1LED DOBi Series

Photometric Parameters*	
Luminous Flux:	870 lm
Radiant Power:	≈ 3300 mW
Efficacy:	≈ 87 lm/W

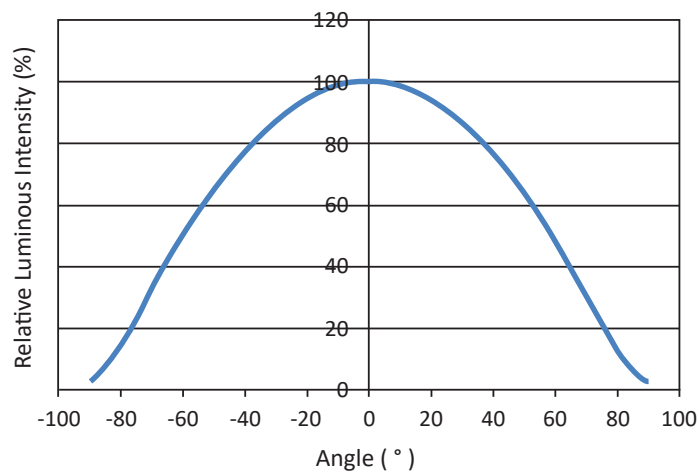
\* Test result shown based on 3000 CCT, 91 CRI model

Electric Parameters	
Voltage	U= 120V
Current	I= 0.1020A
Power	P= 10W
Power Factor	PF≈ 0.95

### RELATIVE POWER DISTRIBUTION VS. VOLTAGE AT Ta=25°C



### RADIATION PATTERN





**L.T.F.**

## DOBi AC Line Voltage LED Boards

Zhaga Optics Compatible 10W Round 44mm (OD)  
QLUXDOBAR4410W1LED DOBi Series

### ABSOLUTE MAXIMUM RATINGS (Ta=25°C)

Parameter	Symbol	Value	Unit
Voltage	V in	150	Vac
LED Solder Temperature	Ts	-20~85	°C
Storage Temperature	Tstg	-40~+100	°C
ESD Sensitivity (HBM)	---	±4000	V
Surge	---	1000	Vac

### MECHANICAL SPECIFICATIONS

