



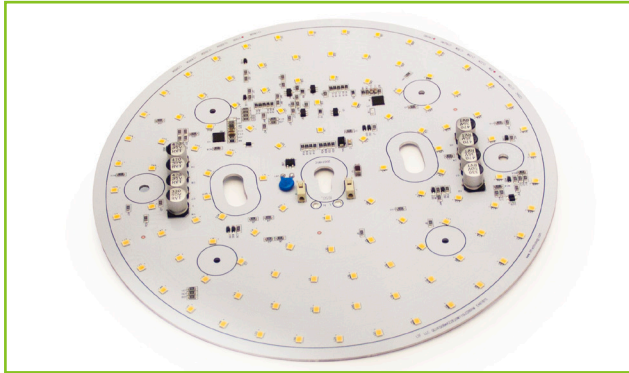
**L.T.F.**

## DOBi AC Line Voltage LED Boards



### Dimmable 45W Round 300mm (OD) QLUXDOBAR30045W123LED DOBi Series

# DOBi



|                         |                  |
|-------------------------|------------------|
| <b>Wattage</b>          | 30W              |
| <b>Input</b>            | 120V AC 50/60 Hz |
| <b>CRI</b>              | 94+              |
| <b>CCT Options</b>      | 2700K - 5000K    |
| <b>Custom CCT</b>       | Available        |
| <b>Size</b>             | 300mm (OD)       |
| <b>Dimming</b>          | ELV, Triac       |
| <b>Optional Dimming</b> | 0-10V            |
| <b>Beam Angle</b>       | 160°             |



**RoHS**



## FEATURES

- Exceeds California Title 24 requirements
- AC line voltage driver on board module;  
No external drivers or transformers required
- High efficacy lumen output: > 90 lm/W
- Smooth dimming with ELV & Triac dimmers
- Optional 0-10V dimming
- 220-240V, 277V AC input with optional voltage converter
- LM-80 compliant LEDs

- High Color Renedering Index (CRI) Ra max. 98
- Tight binning 3 Step Mac Adam Ellipses
- Low heat generation, easy thermal management

## APPLICATIONS

- New or retrofit OEM fixtures
- Indoor or outdoor applications
- Architectural and commercial
- Flush mount and recessed fixtures



## AVAILABLE CONFIGURATIONS

| Order Number          | Suffix | CRI | CCT   | Luminous Flux |
|-----------------------|--------|-----|-------|---------------|
| QLUXDOBAR30045W123LED | - 927  | 94+ | 2700K | 3900lm        |
| QLUXDOBAR30045W123LED | - 930  |     | 3000K | 4000lm        |
| QLUXDOBAR30045W123LED | - 935  |     | 3500K | 4100lm        |
| QLUXDOBAR30045W123LED | - 940  |     | 4000K | 4200lm        |

Custom CCT available

[1] Luminous flux and efficacy are typical value, measured by an integrated phere at 25°C, tolerance: ± 10%;

[2] Ra/CRI is measured with tolerance: ± 2;

[3] Tolerance of power: ± 1W.



**L.T.F.**

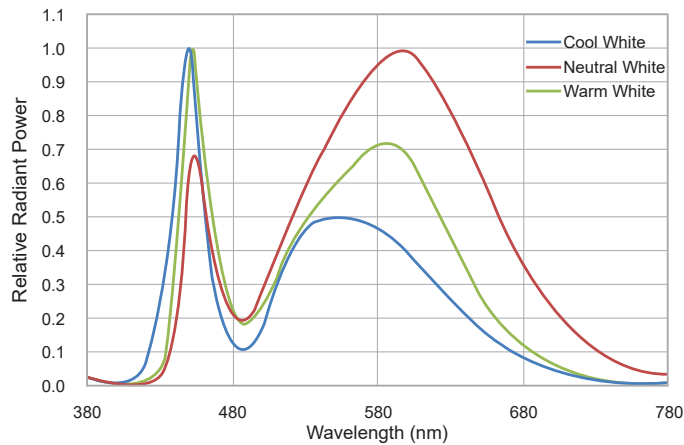
## DOBi AC Line Voltage LED Boards

### Dimmable 45W Round 300mm (OD) QLUXDOBAR30045W123LED DOBi Series

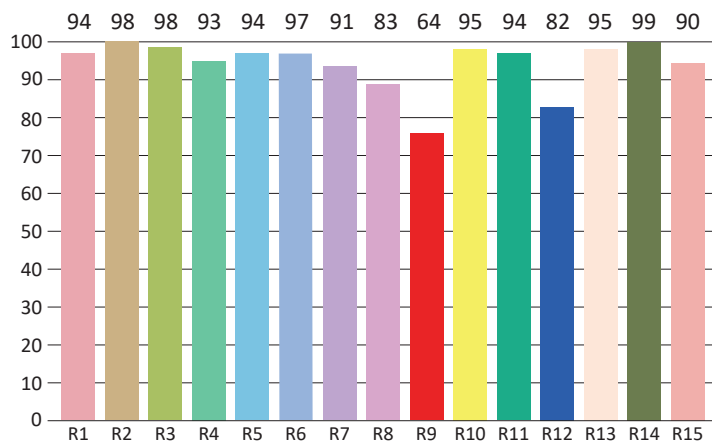
|                                     |                   |
|-------------------------------------|-------------------|
| <b>CIE Colorimetric Parameters*</b> |                   |
| <b>Chromaticity Coordinates</b>     | x=0.4332 y=0.4041 |
| <b>CCT</b>                          | 3063K             |
| <b>Peak Wavelength</b>              | 621nm             |
| <b>Dominant Wavelength</b>          | nm                |
| <b>Rendering Index</b>              | 94                |
| <b>Color Ratio</b>                  | R=%, G=%, B=%     |
| <b>Half Bandwidth</b>               | nm                |
| <b>Color Purity</b>                 | %                 |

\* Test result shown based on 3000 CCT

## SPECTRORADIOMETRIC CHARACTERISTICS



## CRI TEST RESULTS



|       |        |        |        |        |        |        |       |
|-------|--------|--------|--------|--------|--------|--------|-------|
| R1=94 | R2=98  | R3=98  | R4=93  | R5=94  | R6=97  | R7=91  | R8=83 |
| R9=64 | R10=95 | R11=94 | R12=82 | R13=95 | R14=99 | R15=90 |       |

\* Test result shown based on 3000 CCT



**L.T.F.**

## DOBi AC Line Voltage LED Boards

### Dimmable 45W Round 300mm (OD) QLUXDOBAR30045W123LED DOBi Series

| Photometric Parameters* |           |
|-------------------------|-----------|
| <b>Luminous Flux:</b>   | 4000 lm   |
| <b>Radiant Power:</b>   | mW        |
| <b>Efficacy:</b>        | ~ 85 lm/W |

\* Test result shown based on 3000 CCT, 94 CRI model

| Electric Parameters |          |
|---------------------|----------|
| <b>Voltage</b>      | U=120V   |
| <b>Current</b>      | I=       |
| <b>Power</b>        | P=45W    |
| <b>Power Factor</b> | PF≈ 0.90 |

### ABSOLUTE MAXIMUM RATINGS (Ta=25°C)

| Parameter              | Symbol | Value    | Unit |
|------------------------|--------|----------|------|
| Voltage                | V in   | 132      | Vac  |
| LED Solder Temperature | Ts     | -20~+85  | °C   |
| Storage Temperature    | Tstg   | -40~+100 | °C   |
| ESD Sensitivity (HBM)  | ---    | ±4000    | V    |
| Surge                  | ---    | 1000     | Vac  |

### MECHANICAL SPECIFICATIONS

