

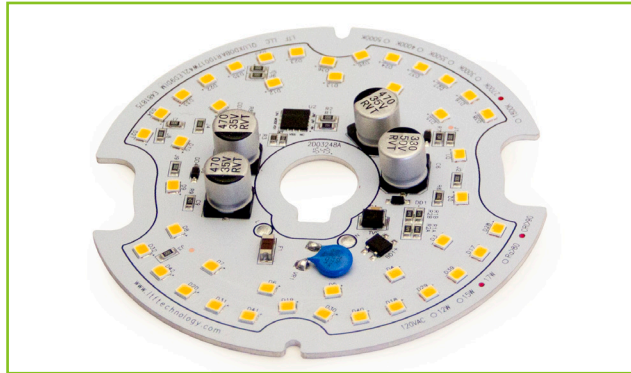


**L.T.F.**

## DOBi AC Line Voltage LED Boards



# DOBi



### Dimmable 17W Round 100mm (OD) QLUXDOBAR10017W42LED DOBi Series

<b>Wattage</b>	17W
<b>Input</b>	120V AC 50/60 Hz
<b>CRI</b>	90+
<b>CCT Options</b>	2700K - 5000K
<b>Custom CCT</b>	Available
<b>Size</b>	100mm (OD)
<b>Dimming</b>	ELV, Triac
<b>Optional Dimming</b>	0-10V
<b>Beam Angle</b>	160°



**RoHS**



## FEATURES

- Exceeds California Title 24 requirements
- AC line voltage driver on board module;  
No external drivers or transformers required
- High efficacy lumen output: > 85 lm/W
- Smooth dimming with ELV & Triac dimmers
- Dimming range <1% - 100%
- Optional 0-10V dimming
- 220-240V, 277V AC input with optional voltage converter
- LM-80 compliant LEDs

- High Color Renedering Index (CRI) Ra max. 98
- Tight binning 3 Step Mac Adam Ellipses
- Low heat generation, easy thermal management



## APPLICATIONS

- New or retrofit OEM fixtures
- Indoor or outdoor applications
- Architectural and commercial
- Flush mount and recessed fixtures



## AVAILABLE CONFIGURATIONS

Model	Suffix	CRI	CCT	Lumens
QLUXDOBAR10017W42LED	- 927	90+	2700K	1400lm
QLUXDOBAR10017W42LED	- 930		3000K	1446lm
QLUXDOBAR10017W42LED	- 940		4000K	1530lm
QLUXDOBAR10017W42LED	- 950		5000K	1620lm

Custom CCT available

[1] Luminous flux and efficacy are typical value, measured by an integrated phere at 25°C, tolerance: ± 10%;

[2] Ra/CRI is measured with tolerance: ± 2;

[3] Tolerance of power: ± 1W.

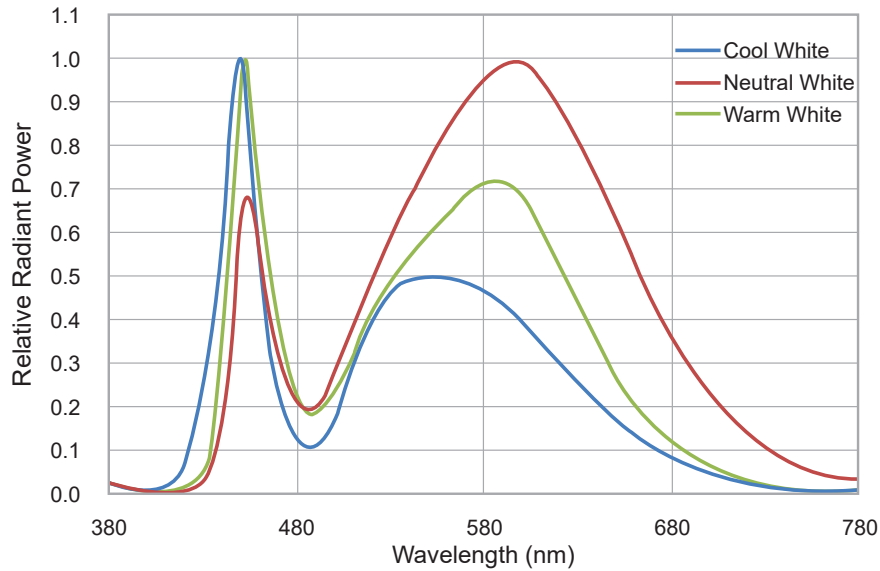


**L.T.F.**

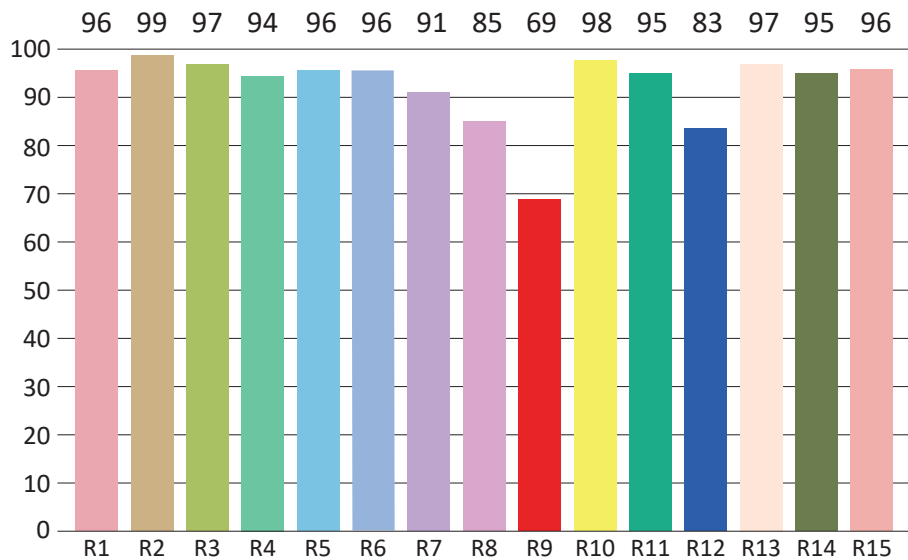
## DOBi AC Line Voltage LED Boards

Dimmable 17W Round 100mm (OD)  
QLUXDOBAR10017W42LED DOBi Series

### SPECTRORADIOMETRIC CHARACTERISTICS



### CRI TEST RESULTS



R1 = 96	R2 = 99	R3 = 97	R4 = 94	R5 = 96	R6 = 96	R7 = 91	R8 = 85
R9 = 69	R10 = 98	R11 = 95	R12 = 83	R13 = 97	R14 = 95	R15 = 96	

\* Test results based on 3000K model



**L.T.F.**

## DOBi AC Line Voltage LED Boards

**Dimmable 17W Round 100mm (OD)  
QLUXDOBAR10017W42LED DOBi Series**

### ABSOLUTE MAXIMUM RATINGS (Ta=25°C)

Parameter	Symbol	Value	Unit
Voltage	V in	132	Vac
LED Solder Temperature	Ts	-20~85	°C
Storage Temperature	Tstg	-40~+100	°C
ESD Sensivity (HBM)	---	±4000	V
Surge	---	1000	Vac

### MECHANICAL SPECIFICATIONS

