



L.T.F.

DOBi AC Line Voltage LED Boards



Dimmable 25W Linear 599x38mm QLUXDOBAL59925W84LED DOBi Series

DOBi



Wattage	20W
Input	120V AC 50/60 Hz
CRI	93+
CCT Options	2700K - 5000K
Custom CCT	Available
Size	599x38mm
Dimming	ELV, Triac
Optional Dimming	0-10V
Beam Angle	160°



RoHS



FEATURES

- Exceeds California Title 24 requirements
- AC line voltage driver on board module; No external drivers or transformers required
- High efficacy lumen output: >94 lm/W
- Smooth dimming with ELV & Triac dimmers
- Optional 0-10V dimming
- 220-240V, 277V AC input with optional voltage converter
- LM-80 compliant LEDs

- High Color Renedering Index (CRI) Ra max. 98
- Tight binning 3 Step Mac Adam Ellipses
- Low heat generation, easy thermal management

APPLICATIONS

- New or retrofit OEM fixtures
- Indoor or outdoor applications
- Architectural and commercial
- Flush mount and recessed fixtures



AVAILABLE CONFIGURATIONS

Model Number	Suffix	CRI	CCT	Lumens
QLUXDOBAL59925W84LED	- 927	93+	2700K	2200 lm
QLUXDOBAL59925W84LED	- 930		3000K	2200 lm
QLUXDOBAL59925W84LED	- 935		3500K	2264 lm
QLUXDOBAL59925W84LED	- 940		4000K	2300 lm
QLUXDOBAL59925W84LED	- 950		5000K	2300 lm

Custom CCT available

[1] Luminous flux and efficacy are typical value, measured by an integrated sphere at 25°C, tolerance: ± 10%;

[2] Ra/CRI is measured with tolerance: ± 2;

[3] Tolerance of power: ± 1W.



L.T.F.

DOBi AC Line Voltage LED Boards

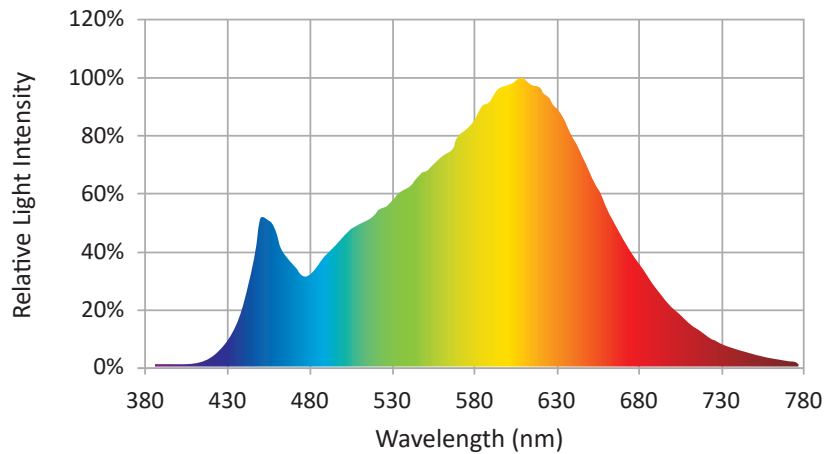


Dimmable 25W Linear 599x38mm QLUXDOBAL59925W84LED DOBi Series

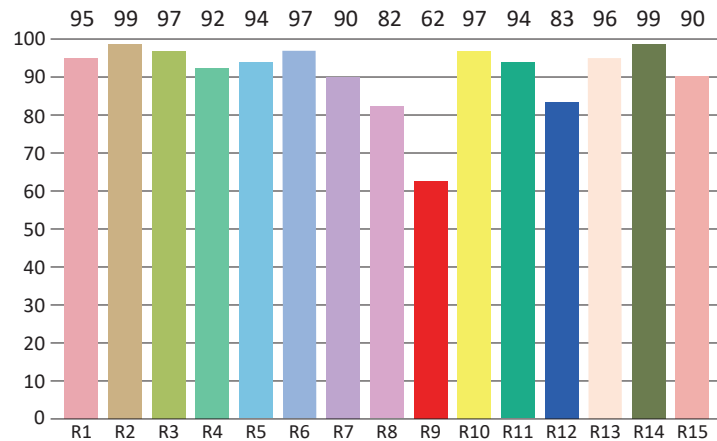
CIE Colorimetric Parameters*	
Chromaticity Coordinates	x=0.4289 y=0.3979
CCT	3047K
Peak Wavelength	620 nm
Dominant Wavelength	581 nm
Rendering Index	93.3
Color Ratio	R=43.9%, G=47.4%, B=8.7%
Half Bandwidth	155.6 nm
Color Purity	0.5051

* Test result shown based on 3000 CCT, 93 CRI model

SPECTRORADIOMETRIC CHARACTERISTICS



CRI TEST RESULTS



R1=95	R2=99	R3=97	R4=92	R5=94	R6=97	R7=90	R8=82
R9=62	R10=97	R11=94	R12=83	R13=96	R14=99	R15=90	

* Test result shown based on 3000 CCT, 93 CRI model



L.T.F.

DOBi AC Line Voltage LED Boards

Dimmable 25W Linear 599x38mm QLUXDOBAL59925W84LED DOBi Series



Photometric Parameters*	
Luminous Flux:	2264.24 lm
Radiant Power:	8283 mW
Efficacy:	≈ 93.9 lm/W

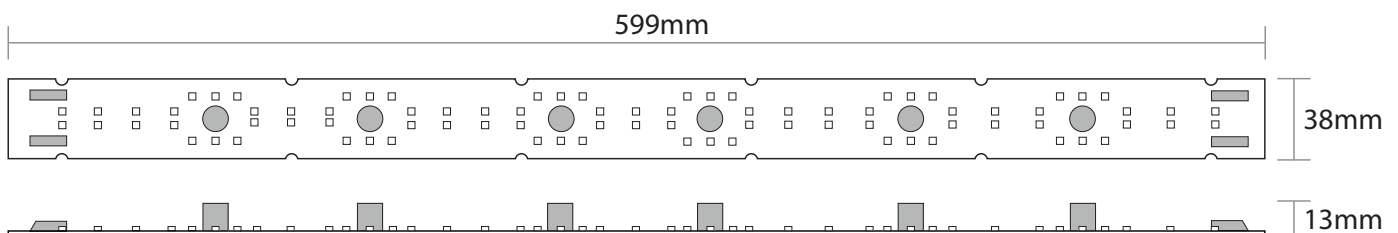
* Test result shown based on 3000 CCT, 93 CRI model

Electric Parameters	
Voltage	U=120V
Current	I= N/A
Power	P=25W
Power Factor	PF≈ 0.93

ABSOLUTE MAXIMUM RATINGS (Ta=25°C)

Parameter	Symbol	Value	Unit
Voltage	V in	132	Vac
LED Solder Temperature	Ts	-20~+85	°C
Storage Temperature	Tstg	-40~+100	°C
ESD Sensitivity (HBM)	---	±4000	V
Surge	---	1000	Vac

MECHANICAL SPECIFICATIONS



L.T.F, L.L.C. PHONE: (847) 498-5832 FAX: (773) 337-5628 EMAIL: LTFsales@ltftechnology.com

Company's Address: 11966 Oak Creek Pkwy. Unit H. Huntley IL 60142 U.S.A. www.ltftechnology.com

© L.T.F., L.L.C. All rights reserved. L.T.F. reserves the right to change specifications for product improvements without notification.