



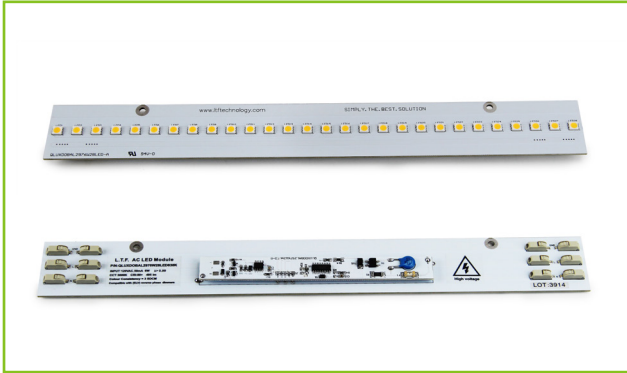
L.T.F.

DOBi AC Line Voltage LED Boards



Dimmable 6W Linear 297x36mm QLUXDOBAL2976W28LED DOBi Series

DOBi



Wattage	6W
Input	120V AC 50/60 Hz
CRI	80, 90+
CCT Options	2400K - 5000K
Custom CCT	Available
Size	297x36mm
Dimming	ELV, Triac
Optional Dimming	0-10V
Beam Angle	160°



RoHS



FCC Part 15
Class B compliant



FEATURES

- AC line voltage driver on board module;
No external drivers or transformers required
- High efficacy lumen output: > 85 lm/W
- Smooth dimming with ELV & Triac dimmers
- Optional 0-10V dimming
- 220-240V, 277V AC input with optional voltage converter
- LM-80 compliant LEDs
- High Color Rendering Index (CRI) Ra max. 98

- Tight binning 3 Step Mac Adam Ellipses
- Low heat generation, easy thermal management

APPLICATIONS

- New or retrofit OEM fixtures
- Indoor or outdoor applications
- Architectural and commercial
- Flush mount and recessed fixtures

AVAILABLE CONFIGURATIONS

Model Number	Suffix	CRI	CCT
QLUXDOBAL2976W28LED	- 822	80+	2200K
QLUXDOBAL2976W28LED	- 825		2500K
QLUXDOBAL2976W28LED	- 827		2700K
QLUXDOBAL2976W28LED	- 830	90+	3000K
QLUXDOBAL2976W28LED	- 832		3200K
QLUXDOBAL2976W28LED	- 835		3500K
QLUXDOBAL2976W28LED	- 840		4000K
QLUXDOBAL2976W28LED	- 850		5000K

Model Number	Suffix	CRI	CCT
QLUXDOBAL2976W28LED	- 922	80+	2200K
QLUXDOBAL2976W28LED	- 925		2500K
QLUXDOBAL2976W28LED	- 927		2700K
QLUXDOBAL2976W28LED	- 930	90+	3000K
QLUXDOBAL2976W28LED	- 932		3200K
QLUXDOBAL2976W28LED	- 935		3500K
QLUXDOBAL2976W28LED	- 940		4000K
QLUXDOBAL2976W28LED	- 950		5000K

Custom CCT available

[1] Luminous flux and efficacy are typical value, measured by an integrated sphere at 25°C, tolerance: ± 10%;

[2] Ra/CRI is measured with tolerance: ± 2;

[3] Tolerance of power: ± 1W.



L.T.F.

DOBi AC Line Voltage LED Boards

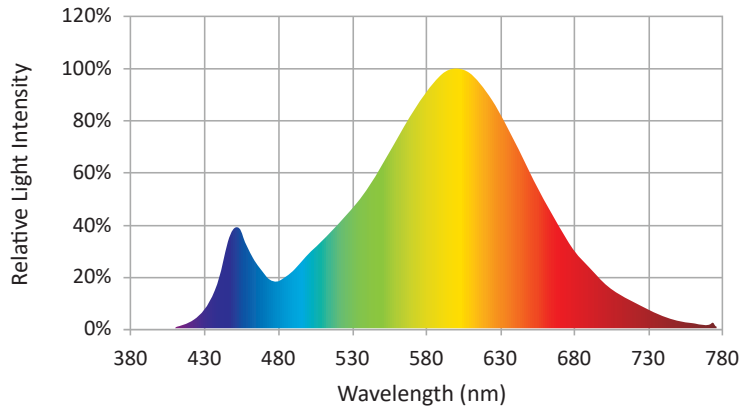


Dimmable 6W Linear 297x36mm QLUXDOBAL2976W28LED DOBi Series

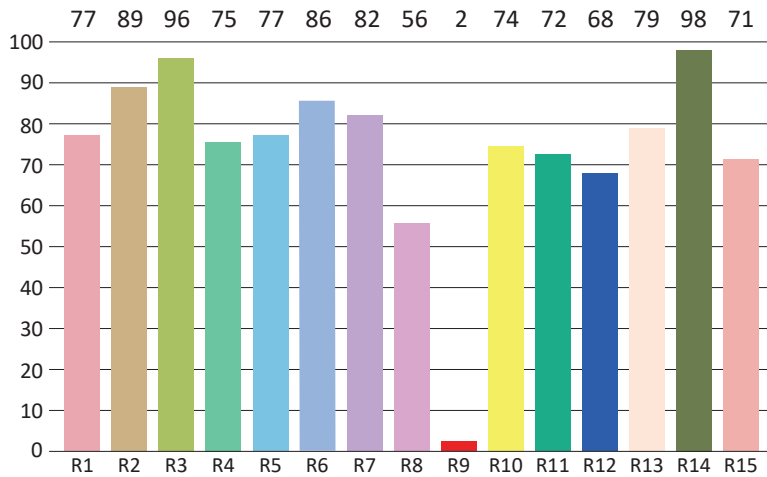
CIE Colorimetric Parameters*	
Chromaticity Coordinates	x=0.4524 y=0.4109
CCT	2810K
Peak Wavelength	602.6nm
Dominant Wavelength	583.4nm
Rendering Index	79.9
Color Ratio	R=23.6%, G=75%, B=1.4%
Half Bandwidth	124.7nm
Color Purity	59.1%

* Test result shown based on 3000 CCT, 80 CRI model

SPECTRORADIOMETRIC CHARACTERISTICS



CRI TEST RESULTS



R1=77	R2=89	R3=96	R4=75	R5=77	R6=86	R7=82	R8=56
R9=2	R10=74	R11=72	R12=68	R13=79	R14=98	R15=71	

* Test result shown based on 3000 CCT, 80 CRI model



L.T.F.

DOBi AC Line Voltage LED Boards

Dimmable 6W Linear 297x36mm QLUXDOBAL2976W28LED DOBi Series

Photometric Parameters*	
Luminous Flux:	495.15lm
Radiant Power:	1466.8mW
Efficacy:	82.5lm/W

* Test result shown based on 3000 CCT, 80 CRI model

Electric Parameters	
Voltage	U=120.7V
Current	I=0.05A
Power	P=6W
Power Factor	PF=0.994

ABSOLUTE MAXIMUM RATINGS (Ta=25°C)

Parameter	Symbol	Value	Unit
Voltage	V in	132	Vac
LED Solder Temperature	Ts	-20~+85	°C
Storage Temperature	Tstg	-40~+100	°C
ESD Sensitivity (HBM)	---	±4000	V
Surge	---	1000	Vac

MECHANICAL SPECIFICATIONS

